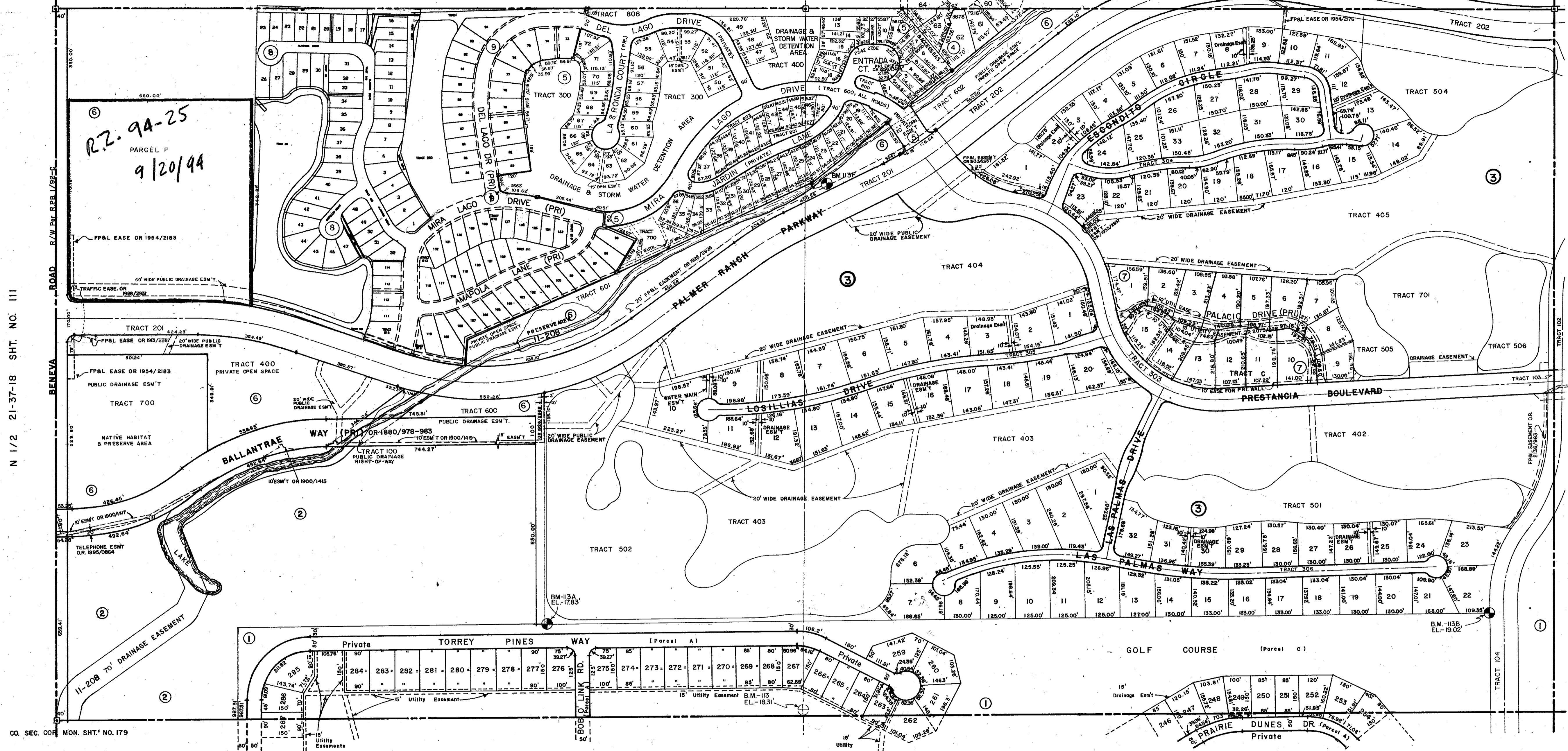


CO. SEC. COR. MON. SHT. NO. 178

CO. SEC. COR. MON. SHT. NO. 205

SEC. COR. 236



N 1/2 21-37-18 SHT. NO. 111

N 1/2 23-37-18 SHT. NO. 115

CO. SEC. COR. MON. SHT. NO. 179

SUBDIVISION INDEX

- 1. The Country Club of Sarasota 24/16
- 2. BALLANTRAE CONDO. C.B. 14/26
- 3. PRESTANCIA P.B. 31-27K
- 4. MARBELLA P.B. 33/33J
- 5. MIRA LAGO AT PALMER RANCH PHASE I P.B. 34/18-18E
- 6. PALMER RANCH INCREMENT II TRACT SUBDIVISION P.B. 34/25-25C
- 7. PALACIO P.B. 35/22B
- 8. MIRA LAGO AT PALMER RANCH PHASE 3 P.B. 37/22B
- 9. MIRA LAGO AT PALMER RANCH PHASE 2 P.B. 36/10

LEGEND:

- ☐ County Section Corner Monument
- ⊕ County Bench Mark
- ⊙ Permanent Ref. Mon. for Subs.
- ① Subdivision Index Number

REVISIONS

DATE	DESCRIPTION	BY
JUNE 1991	ADDED PRIVATE EASEMENT REF. D.R. 2296/1543	KAM
APR 1991	ADDED PALACIO SUB. P.B. 35/22B	KAM
APR 1987	ADDED PALMER RANCH INCREMENT II TRACT SUB. P.B. 34/25-25C	KAM
JULY 1990	ADDED MIRA LAGO AT PALMER RANCH PHASE I P.B. 34/18	KLP
AUG 1989	ADDED FPPL EASEMENT P.W. OR 2126/0985	KLP
AUG 1989	ADDED MARBELLA P.B. 33/33J	KLP
DEC 1988	15' CENTRAL COUNTY UTILITIES EASEMENT P.W. OR 2073/350	SCB
FEB 1987	ADDED BM 1133 EASEMENT OR 1026/2951	RAK
APR 1987	ADDED FPPL EASEMENT OR 1943/2387	RAK
APR 1987	20' FPPL EASEMENT OR 1924/2326	RAK
MAY 1987	10' CO. UTILITY EASEMENT - OR 1926/2928	PAR
APR 1987	ADDED PRESERVE TO SHAGG. INDEX	PAR
JUNE 1987	FPPL EASEMENT (TRAC 502 & 601) & (TRAC 602, ESM'T 15'x10') OR 1933/2937	PAR
NOV 1987	ADDED DRAINAGE EASEMENT & NUMBER	PAR
JAN 1986	10' FPPL EASEMENT OR 1954/2183	TBO
JAN 1986	10' FPPL EASEMENT OR 1900/1415-1419	TBO
JAN 1987	REDRAWN CAD	RAK
JAN 1987		CAR

SARASOTA COUNTY, FLORIDA

Scale: 1" = 200'

Drawn By:

**N 1/2 SECTION 22
TWP. 37 S. RNG. 18 E.**



Sheet No.

113