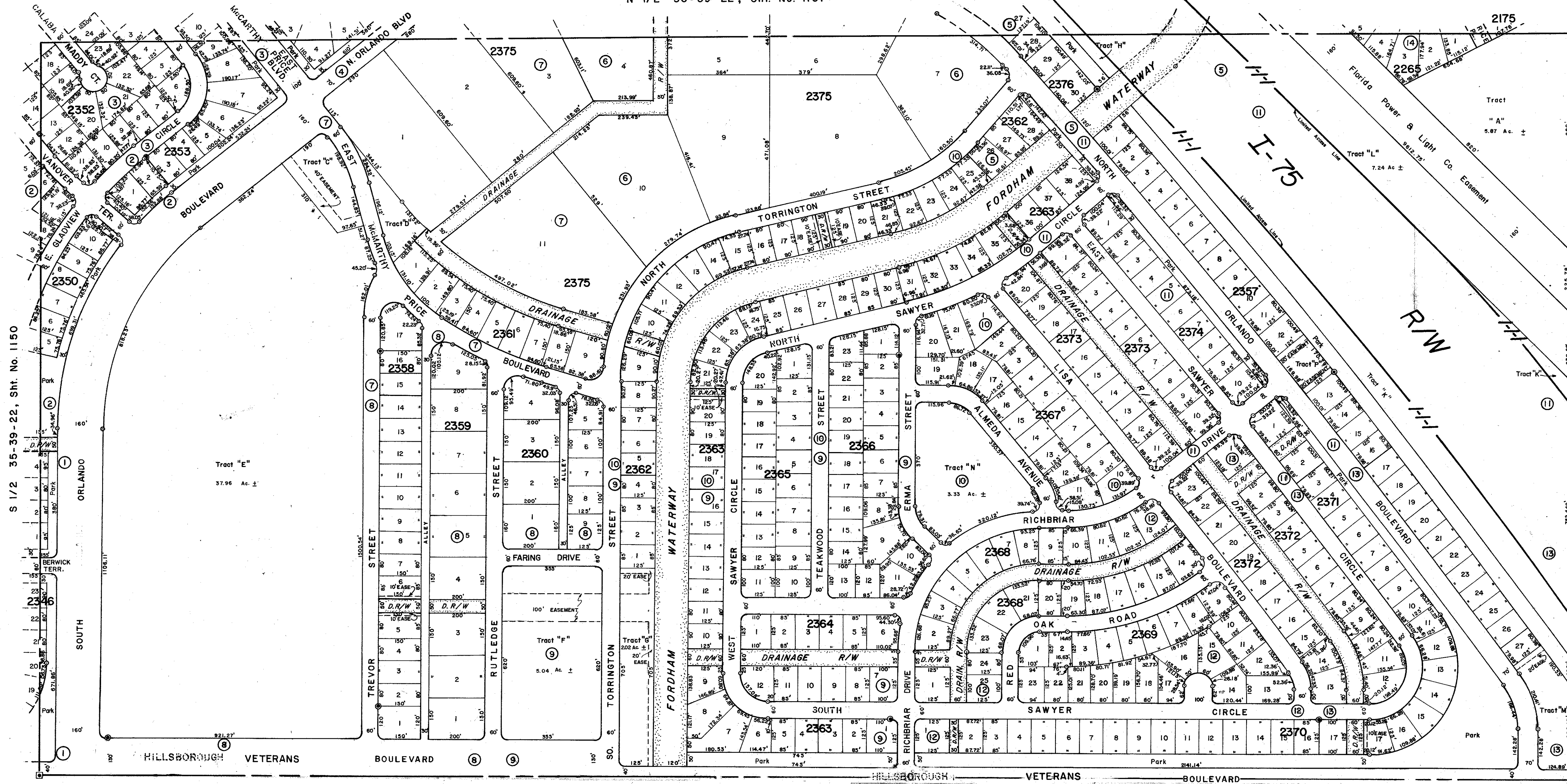


N 1/2 36-39-22, Sht. No. 1151



S 1/2 35-39-22, Sht. No. 1150

SUBDIVISION	INDEX
1. Port Charlotte 46th Add., Sht. No. 5	20/5 D
2. " " " " " " Sht. No. 6	20/5 E
3. " " " " " " Sht. No. 7	20/5 F
4. " " " " " " Sht. No. 8	20/5 G
5. " " " " " " Sht. No. 11	20/5 J
6. " " " " " " Sht. No. 12	20/5 K
7. " " " " " " Sht. No. 13	20/5 L
8. " " " " " " Sht. No. 14	20/5 M
9. " " " " " " Sht. No. 15	20/5 N
10. " " " " " " Sht. No. 16	20/5 O
11. " " " " " " Sht. No. 17	20/5 P
12. " " " " " " Sht. No. 18	20/5 Q
13. " " " " " " Sht. No. 19	20/5 R
14. Port Charlotte 46th Add., Sht. No. 33	19/45 FF

- LEGEND:
- County Section Corner Monument
 - Permanent Reference Monument
 - Reference Point for Subdivisions
 - ① Subdivision Index Number
 - Drainage

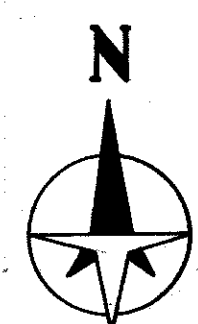
REVISIONS	
DATE	DESCRIPTION
June 1976	Added Port Charlotte 46th Addition - D.G.N.
Feb. 1980	Added I-75 R/W per S.D. Map
Jan. 1991	CHANGED STREET NAMES PER D.R. 2046/65
MAR 1997	CHANGED HILLSBOROUGH TO VETERANS BLVD.

SARASOTA COUNTY, FLORIDA
 Scale: 1" = 200' Date: June, 1974
 Drawn By: D.G.N.

**S. 1/2 Section 36
 Twp. 39 S. - Rge. 22 E.**

Sheet No. **1152**

NOTE: 20' non-exclusive maintenance easement at the lot line or tract line abutting to and adjacent to all creeks, waterways or drainage rights of way, except as shown by dashed lines shown on the plat. Per. O.R. 1886/1823



DRAWING 44-511 16772