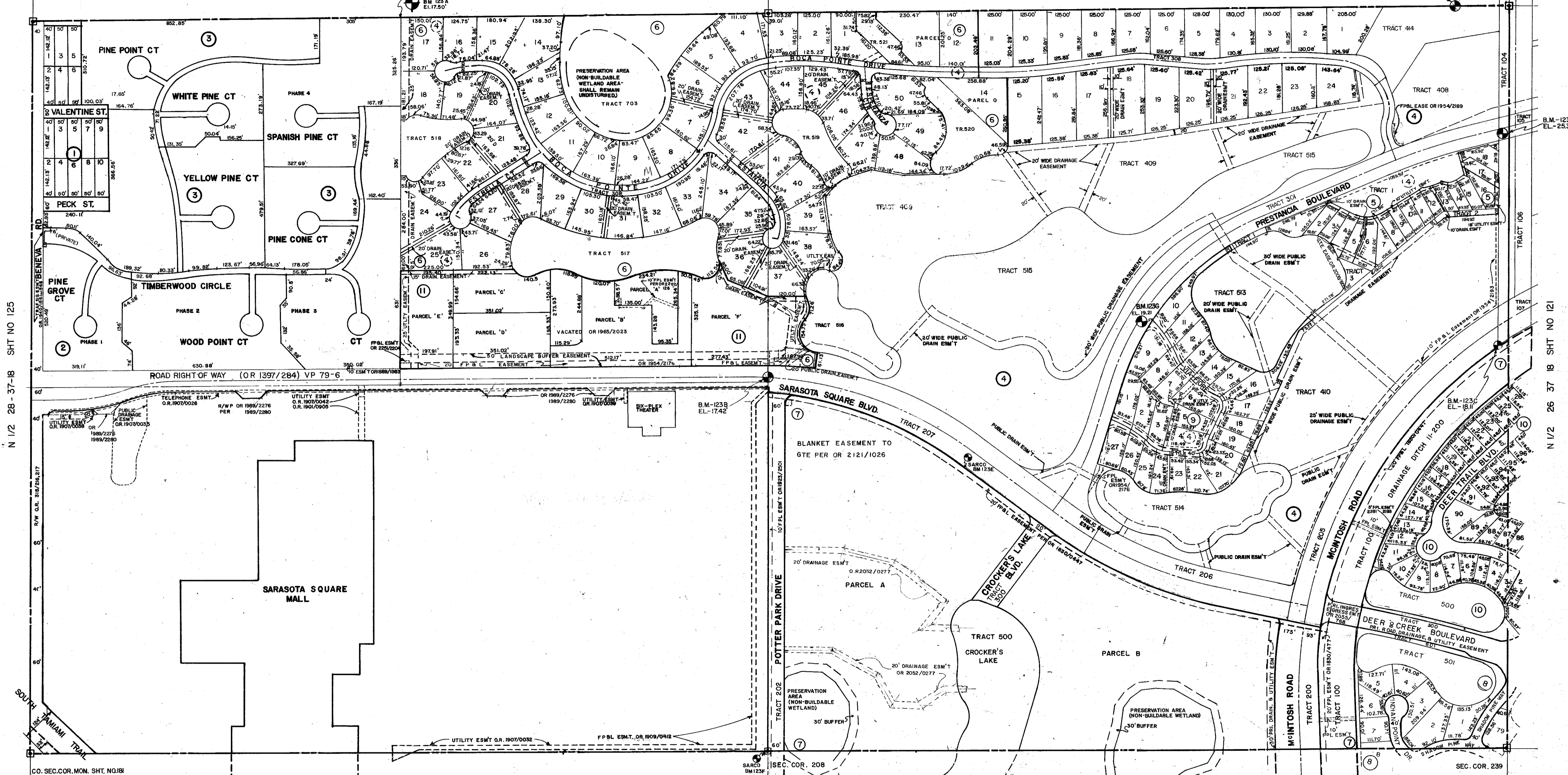


CO. SEC. COR. MON. SHT. NO. 180

SEC. COR. 207

B.M. -114A  
EL. -19.57



N 1/2 28-37-18 SHT NO 125

N 1/2 26-37-18 SHT NO 121

S 1/2 27-37-8 SHT NO. 124

CO. SEC. COR. MON. SHT. NO. 181

SEC. COR. 239

**SUBDIVISION INDEX**

| NO  | NAME   |
|-----|--|
| 1.  | PINE TREE ACRES 5/97 (PARTLY VACATED)                                      |
| 2.  | PINE TREE VILLAGE, Phase 1B2, CB 17/4-4, Phase 3CB 25/14 AMENDED CB, 26/18 |
| 3.  | VILLAGE des PINS CB 21/47, 22/45, 23/20, 24/10                             |
| 4.  | PRESTANCIA PB. 31/27   |
| 5.  | VILLA PALMERAS PB. 32/9  |
| 6.  | PRESTANCIA M, N & O AMENDED 32/11-11F                                      |
| 7.  | CROCKER'S LAKE PB 32/35-35B  |
| 8.  | DEER CREEK, UNIT 1, PB 32/40-40D   |
| 9.  | VILLA FIORE PB 33/5, A-B   |
| 10. | VILLAS AT DEER CREEK PB 34/8   |
| 11. | THE PALMER CLUB OF PRESTANCIA, C.B. 29/4-4K                                |

- LEGEND:**
- County Section Corner Monument
  - County Bench Mark
  - Permanent Ref. Mon. for Subs.
  - Subdivision Index Number

**REVISIONS**

| DATE     | DESCRIPTION                           | BY  |
|----------|---------------------------------------|-----|
| JAN 1987 | REVISED CAD                           | RAK |
| JAN 1987 | CROCKER'S LAKE PB 32/35               | RAK |
| JAN 1987 | DEER CREEK UNIT 1 PB 32/40            | RAK |
| JAN 1987 | PUBLIC DRAINAGE EASEMENT OR 1907/0035 | RAK |
| JAN 1987 | F.P.B.L. EASEMENT OR 1804/2176        | RAK |
| JAN 1987 | F.P.B.L. EASEMENT OR 1804/2176        | RAK |
| JAN 1987 | UTILITY EASEMENT OR 1907/0041         | RAK |
| JAN 1987 | AMENDED PRESTANCIA M, N & O           | RAK |
| JAN 1987 | AMENDED VILLAS AT DEER CREEK PB 34/8  | RAK |
| APR 1987 | 10' UTILITY EASEMENT OR 1923/2602     | RAK |

**SARASOTA COUNTY, FLORIDA**  
Scale: 1" = 200'  
Date: JAN 1987  
Drawn By: RAK

**N 1/2 SECTION 27  
TWP 37 S RNG 18 E**

Sheet No. **123**

