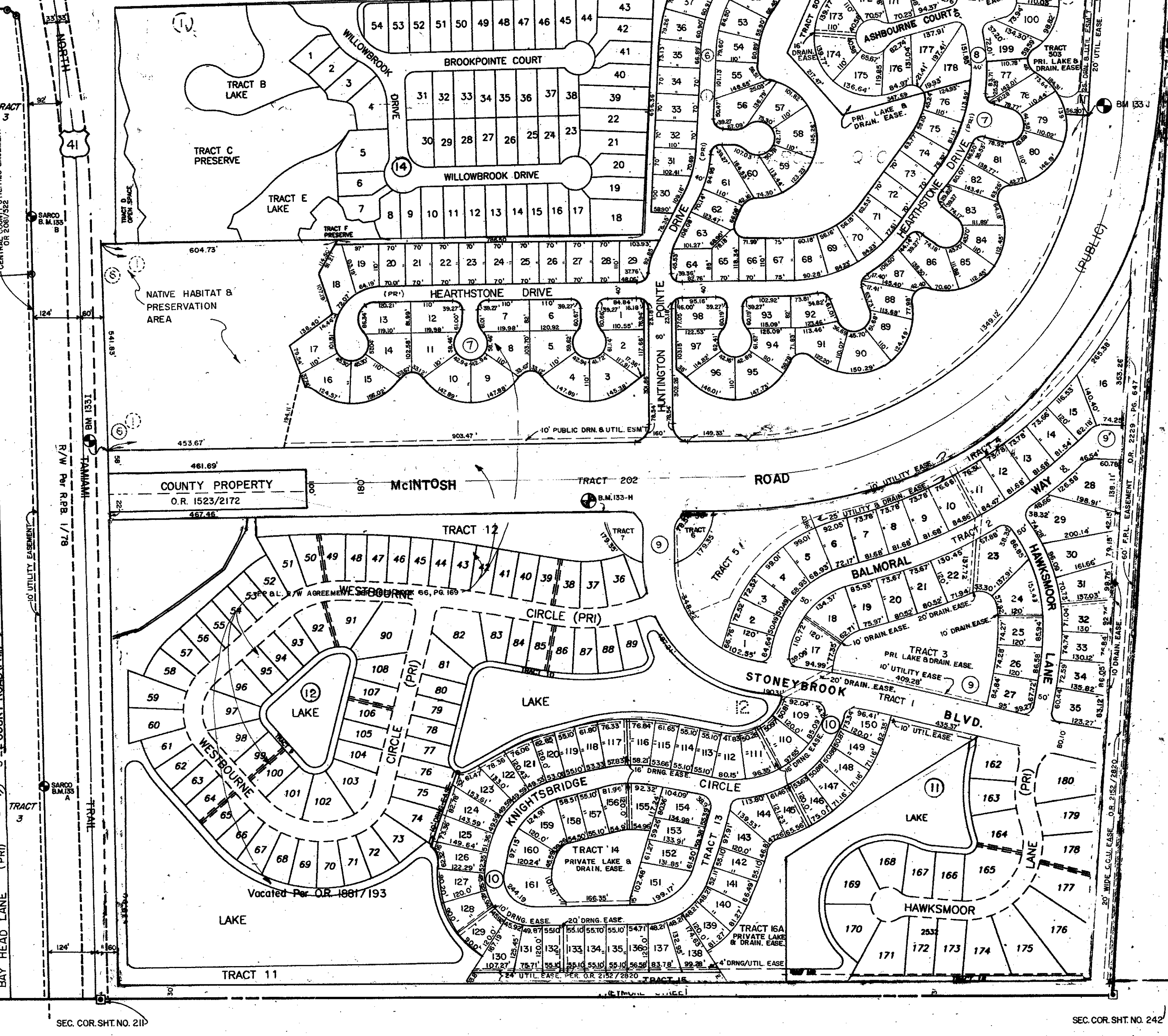
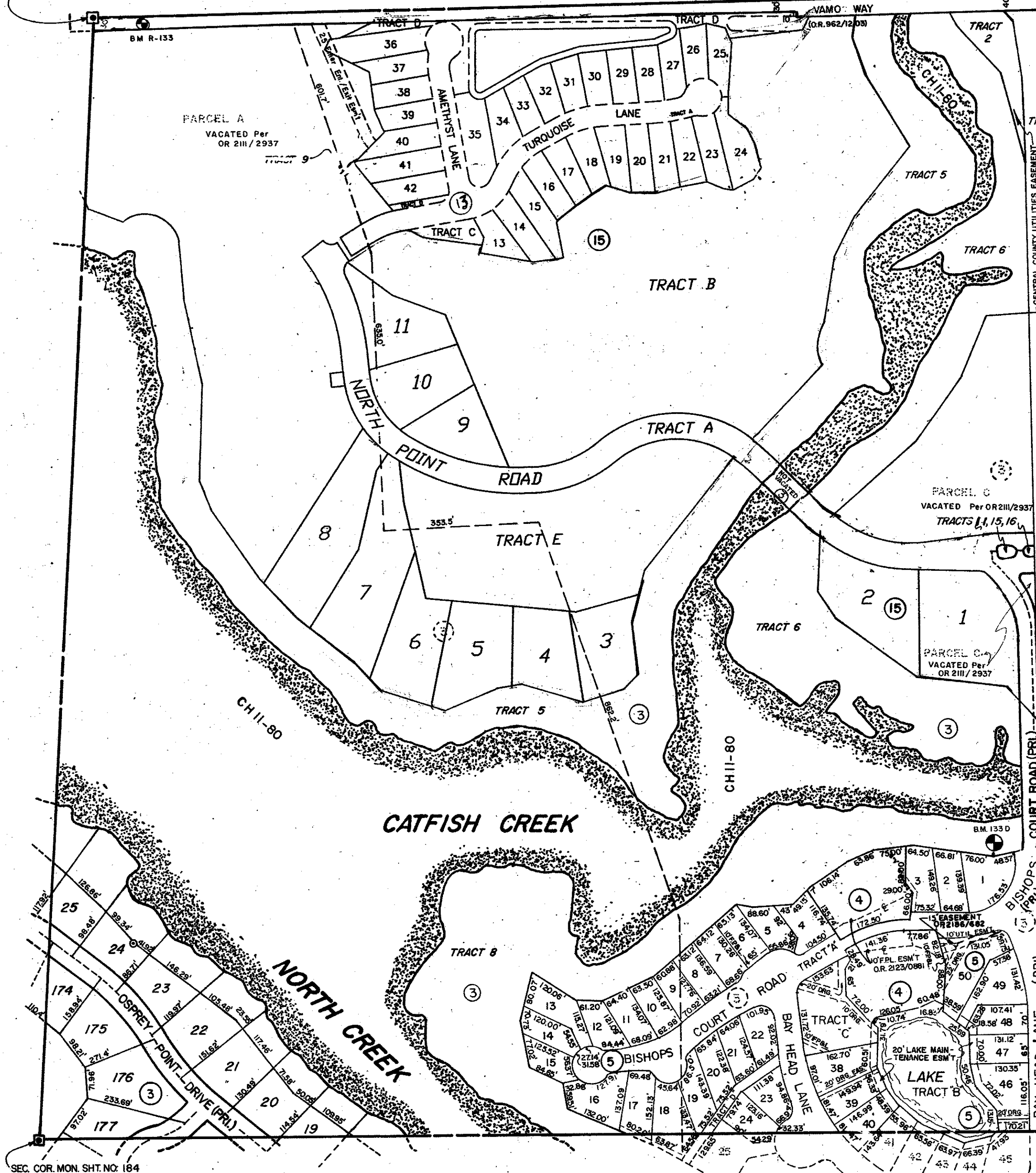


N 1/2 34-37-18 SHT. NO. 132

CO. SEC. COR. MON. SHT. NO. 210

CO. SEC. COR. MON. SHT. NO. 185



N 1/2 3-38-18 SHT. NO. 142

SEC. COR. SHT. NO. 210

SEC. COR. SHT. NO. 242

**SUBDIVISION INDEX**

- No. Name
- 1. SUB. OF EAST 1/2 & N.W. 1/4 SEC. 34 - TWP. 37S. - RGE. 18E. A/12
- 2. THE OAKS 1/9
- 3. OAKS 28/48
- 4. THE BISHOPSCOURT TOWNHOMES ONE C.B. 23/44
- 5. BISHOPSCOURT AT THE OAKS PRESERVE P.B. 33/28
- 6. PARCEL Q - INCREMENT 5 P.B. 34/26
- 7. HUNTINGTON PT. UNIT 1 P.B. 34/48
- 8. HUNTINGTON PT. UNIT 2 P.B. 35/29
- 9. STONEYBROOK AT PALMER RANCH UNIT 1 P.B. 35/30-30C
- 10. STONEYBROOK AT PALMER RANCH UNIT 2, P.B. 35/39-39B
- 11. STONEYBROOK AT PALMER RANCH UNIT 4 P.B. 36/16
- 12. STONEYBROOK AT PALMER RANCH UNIT 3 P.B. 36/17
- 13. EMERALD WOODS AT OAK 3 PHASE 2 P.B. 40P/19
- 14. WILLOWBROOK PB41PG38
- 15. OAKS 3 PHASE 1 PB41PG5

**LEGEND:**

- ☐ County Section Corner Monument
- County Bench Mark
- Permanent Ref. Mon. for Subs.
- ① Subdivision Index Number

DATE	REVISIONS	DESCRIPTION
AUG. 1990	ADDED R/W PER O.R. 2189/304	KAM
AUG. 1990	ADDED PARCELS Q - INCREMENT 5 P.B. 34/26	KLP
AUG. 1990	ADDED OFF-ROAD EASE PER O.R. 2123/0881	KLP
MAR. 1990	ADDED 15' EASEMENT FOR CCU O.R. 2185/682	JFU
OCT. 1989	ADDED BISHOPSCOURT AT THE OAKS PRESERVE P.B. 33/28	SCB
APR. 1989	VACATED PARCELS A, B, D, & E TRACTS 9, 10, 11, 12 & 13 & 14 PORTION OF PARCEL Q P.B. 211/2937	SCB
MAY 1988	ADDED B.M. 1333 UTILITIES EASEMENT PER O.R. 2061/232	B.M.
OCT. 1988	VACATED PARCELS 14, 15, 16 & 17 AND TRACTS 18 & 19 P.B. 28/48 PER O.R. 2070/502	SCB
FEB. 1987	ADDED CANAL NUMBERS	SCB
AUG. 1986	ADDED B.M. 1333	B.M.
AUG. 1986	VACATED LOTS IN BLK 4, SARASOTA VENUE CO., OR 1881/193	WFW

**SARASOTA COUNTY, FLORIDA**

Scale: 1" = 200' Date: SEPTEMBER 1985

Drawn By: PJB

**S 1/2 SECTION 34  
TWP. 37 S. RGE. 18 E.**

Sheet No.

133



S 1/2 35-37-18 SHT. NO. 131

S 1/2 35-37-18 SHT. 135