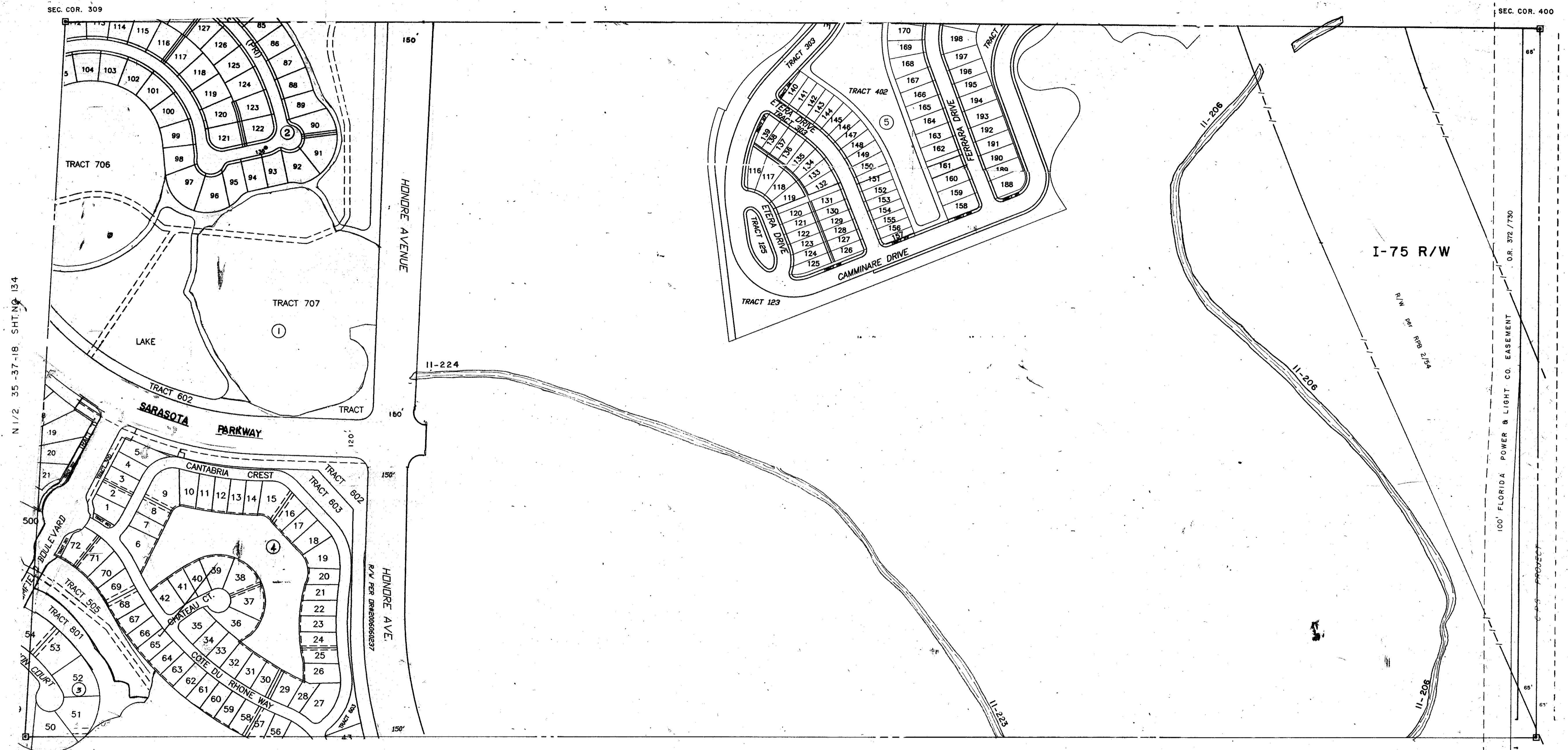


S1/2 25 - 37 - 18 SHT. NO. 120.



S1/2 36 - 37 - 18 SHT. NO. 137

- 1 TURTLE ROCK UNIT 1 PB 36/34
- 2 PARCEL A-2 AT TURTLE ROCK PB 37PG10
- 3 SILVER OAK UNIT 1 PB 40/23
- 4 VINE YARDS OF SILVER OAKS PB 41PG13
- 5 VILLAGEWALK, UNIT 1B PB 42PG31.

- LEGEND
- PERM. REF. MON. (for Subs)
 - CONC. MON.
 - IRON PIPE.
 - CO. SEC. COR. MON. (NEW NUMBERS)

DATE	ALTERATIONS DESCRIPTION
JULY 1964	REDRAWN
AUG 1965	CON. REF. MON. ADDED
FEB 1976	ADDED I-75 (State Road Map)
FEB 1978	ADDED F.P.B.L. CO. EASE. 91 PER S.W.N. PROJ. NO. 778
JUN 1982	ADDED SECTION CORNER NUMBERS
OCT 1987	ADDED CHAINS & CANCEL NUMBERS
JAN 1992	ADDED O.R. 372/730

SARASOTA COUNTY FLORIDA.
SCALE 1"=200' JULY 1964

N 1/2 SECTION 36
TWP. 37 S. RNG. 18 E.

SHT. NO.
136

