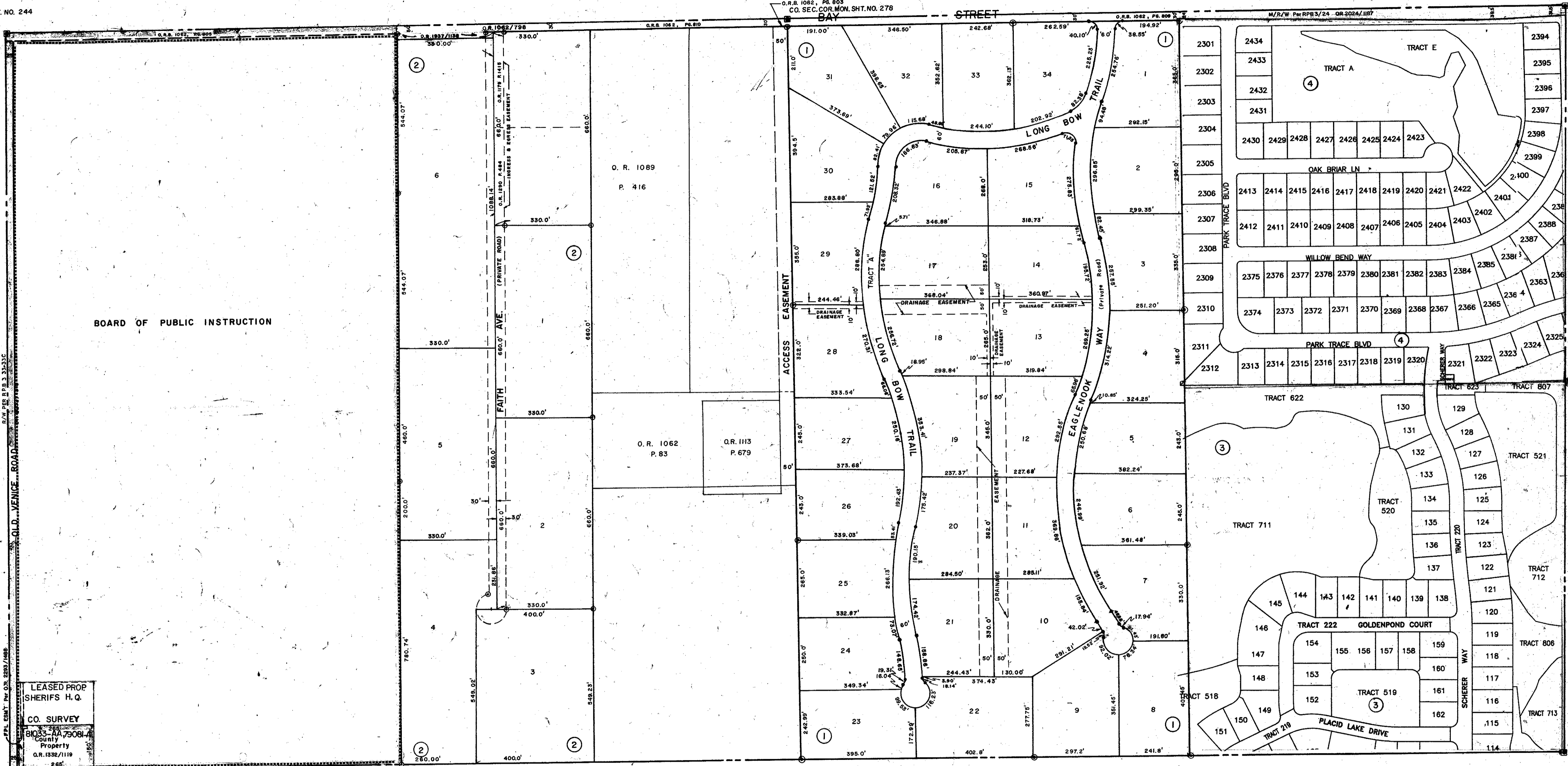


BOARD OF PUBLIC INSTRUCTION



LEASED PROP
SHERIFFS H.Q.
CO. SURVEY
81033-1A-73081-A
County Property
O.R. 1032/119
265'

SUBDIVISION INDEX

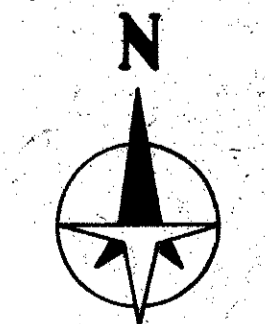
1.	PINE RANCH	23/46-46C
2.	TRINITY ACRES	26/6
3.	RIVENDALE UNIT 5 THE WOODLANDS PB42PG35	
4.	PARK TRACE ESTATES PB40PG26	

- LEGEND:
- County Section Corner Monument
 - County Bench Mark
 - Permanent Ref. Mon. for Subs.
 - ① Subdivision Index Number
 - County Property

REVISIONS	
DATE	DESCRIPTION
DEC 1990	COUNTY PROPERTY Designated
OCT. 1993	Removed East end of BAY ST.
MAY 1997	O.R. 1032/119 PER R/W ORD.
JAN 1999	ADD MAINTAINED RIGHT OF WAY RPB 3/24 OR2024/187
NOV 1999	ADDED R/W PER O.R. 2232/1316
FEB 1992	ADDED FPL EMTY Rv O.R. 2293/1486

SARASOTA COUNTY, FLORIDA
Scale: 1" = 200' Date: MAY 1979
Drawn By: G.M.FOSNESS

**N 1/2 SECTION 11
TWP. 38 S. RNG. 18 E**



Sheet No.
149