

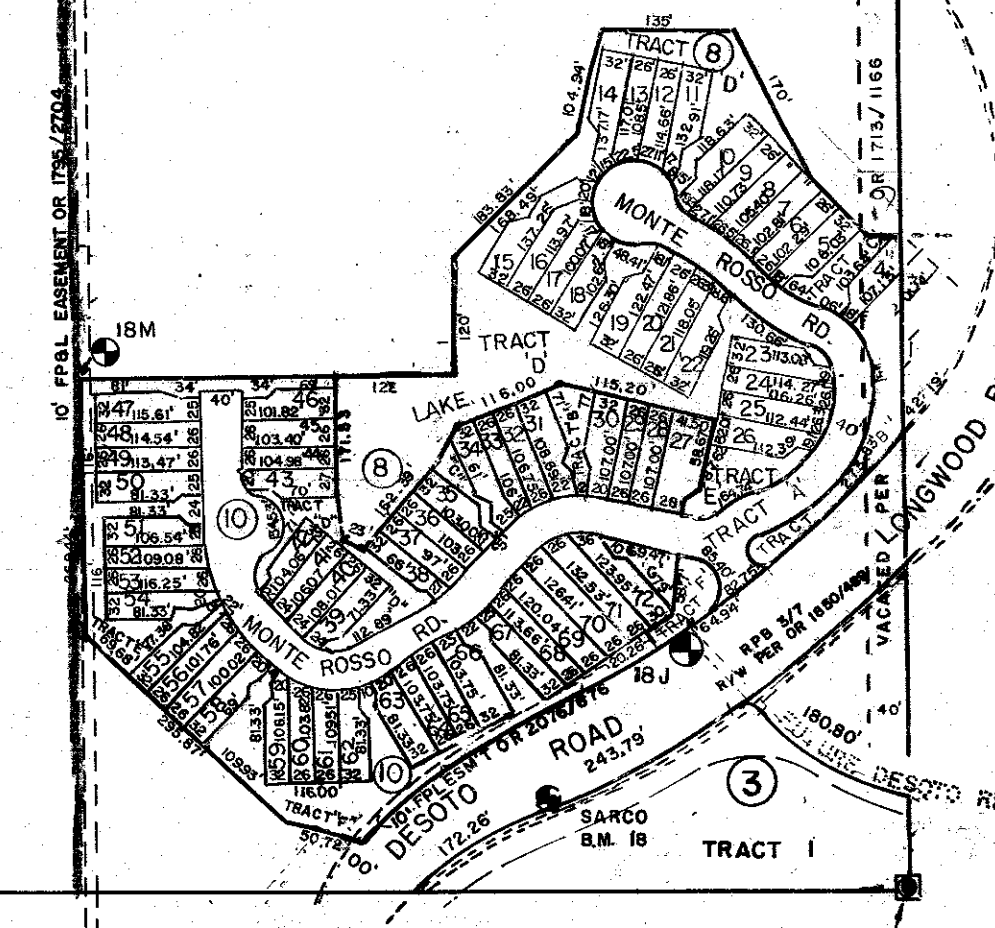
N 1/2 4-36-18 SHT. NO. 20

N 1/2 2-36-18 SHT. NO. 16

RP 87-40  
3/4/87  
LONGWOOD PARK  
COUNTY PROPERTY  
per  
OR 1674/2154  
CO. SURVEY  
#87052-A  
& 88002-D

RP 93 00  
SE 1422  
6/17/98

S.E.  
1422  
6/16/98



CO. SEC. COR. MON. SHT. NO. 161

CO. SEC. COR. MON. SHT. NO. 188

CO. SEC. COR. MON. SHT. NO. 219

- SUBDIVISION INDEX**
- DESOTO PINES SUBDIVISION, UNIT I, P.B. 24/45 A,B
  - DESOTO PINES SUBDIVISION, UNIT 2 P.B. 29/27
  - LONGWOOD RUN SUBDIVISION, UNIT I, P.B. 30/8,8A
  - CEDAR CREEK, SUBDIVISION, UNIT NO. IX, P.B. 31/8 (VACATED per OR 1989/439)
  - CEDAR CREEK, UNIT NO. II, P.B. 31/7
  - CEDAR CREEK, UNIT NO. XI, P.B. 31/18
  - CEDAR CREEK, SUBDIVISION, UNIT NO. IX, AMENDED P.B. 32/3
  - RIVIERA CLUB VILLAGE AT LONGWOOD RUN, PHASE I, P.B. 32/48
  - CEDAR CREEK UNIT III, P.B. 34/13
  - RIVIERA CLUB VILLAGE AT LONGWOOD RUN, PHASE II, P.B. 34/23 B

- LEGEND:**
- County Section Corner Monument (NEW MON.)
  - County Bench Mark
  - Permanent Ref. Mon. for Subs.
  - Subdivision Index Number

**REVISIONS**

DATE	DESCRIPTION	BY
MAY 1988	UTILITY EASEMENT OR 208/2046	KLP
JUN 1988	10' FEET ESMT OR 208/2046	RAK
JAN 1989	RIVIERA CLUB VILLAGE AT LONGWOOD RUN	RAK
JUN 1989	ADDED SANDY INGRESS EASEMENT O.R. 2041/0857	RAK
DEC 1987	CEDAR CREEK UNIT IV AMENDED P.B. 32/16	RAK
NOV 1989	VACATED CEDAR CREEK SUB UNIT 4 OR 1989/439	RAK
MAY 1987	ADDED CANAL NUMBER	RAK
AUG 1986	ADDED CEDAR CREEK UNIT NO. IX, P.B. 31/8	RAK
JUN 1986	CORRECTED DESOTO RD. R/W	RAK
JUN 1986	CEDAR CREEK UNIT NO. IX, P.B. 31/8	RAK
APR 1988	ADDED CEDAR CREEK UNIT NO. IX, P.B. 31/8	RAK
APR 1988	ADDED LONGWOOD RUN BLVD. R/W per OR 1850/0489	RAK
JAN 1988	10' FEET ESMT OR 1795/2704	RAK
SEP 1985	ADDED BENCH MARK LONGWOOD RUN SUB UNIT I	RAK
SEP 1984	ADDED LONGWOOD RUN SUBDIVISION UNIT I	RAK
SEP 1984	SV 84-24, Mc Intosh RE. VACATED per OR 1713/1166	RAK

**SARASOTA COUNTY, FLORIDA**  
Scale: 1" = 200' Date: JANUARY 1978

**N 1/2 SECTION 3  
TWP. 36S. RNG. 18E.**

Sheet No. **18**

