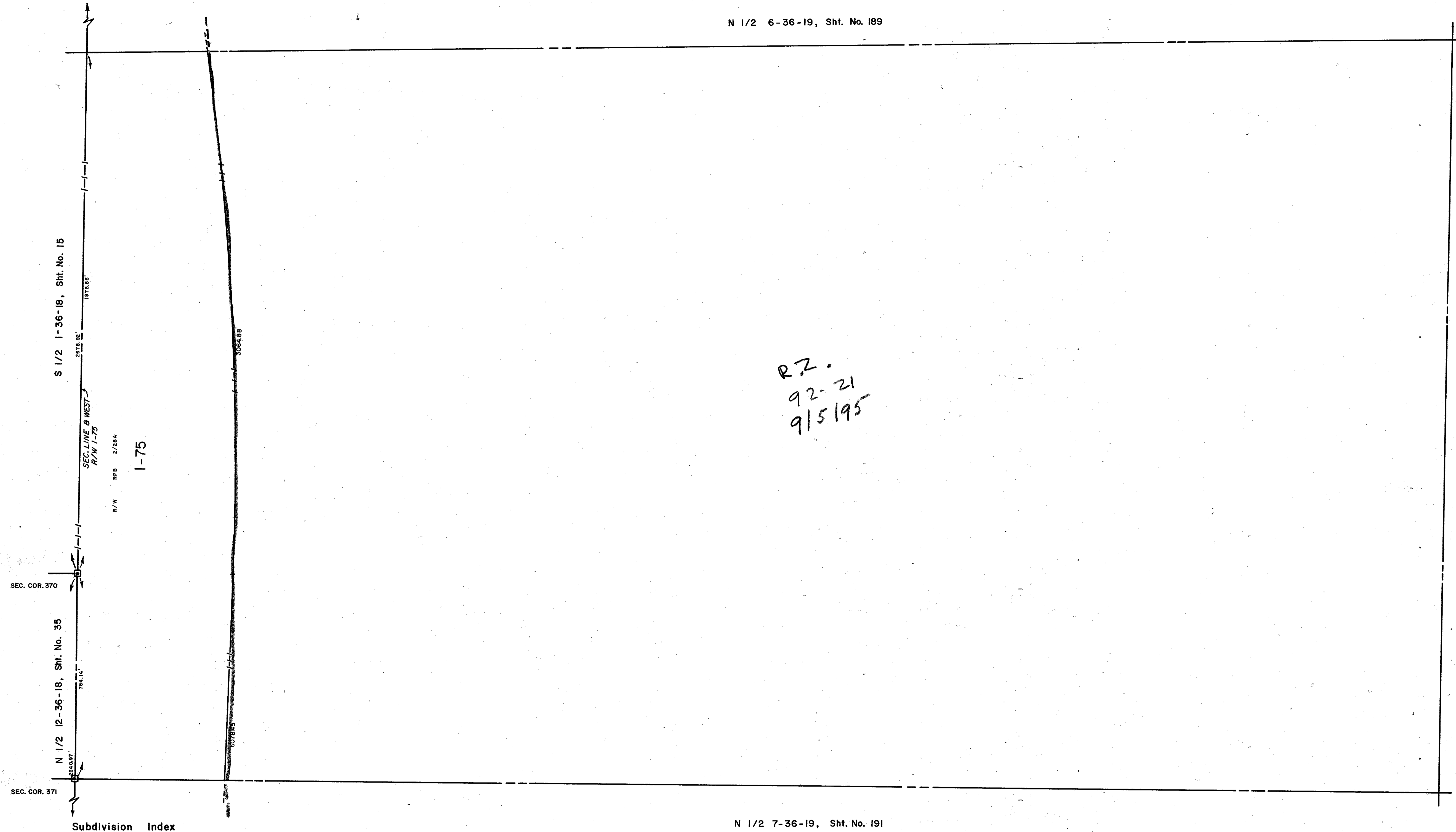


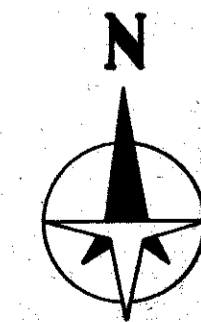
N 1/2 6-36-19, Sht. No. 189

S 1/2 5-36-19, Sht. No. 188

RZ.
92-21
9/5/95



N 1/2 7-36-19, Sht. No. 191



LEGEND:

- ☐ County Section Corner Monument (NEW NO.)
- ⊕ County Bench Mark
- Permanent Ref. Mon. for Subs.
- ① Subdivision Index Number

REVISIONS	
DATE	DESCRIPTION
Sept. 1977	Added 1-75
OCT. 1982	CORRECTED SECTION CORNERS

SARASOTA COUNTY, FLORIDA

Scale: 1" = 200' Date: Nov. 1973

Drawn By: J. L. D.

S. 1/2 Section 6
Twp. 36 S. - Rge. 19 E.

Sheet No.
190

BRUNING 44-511 16772