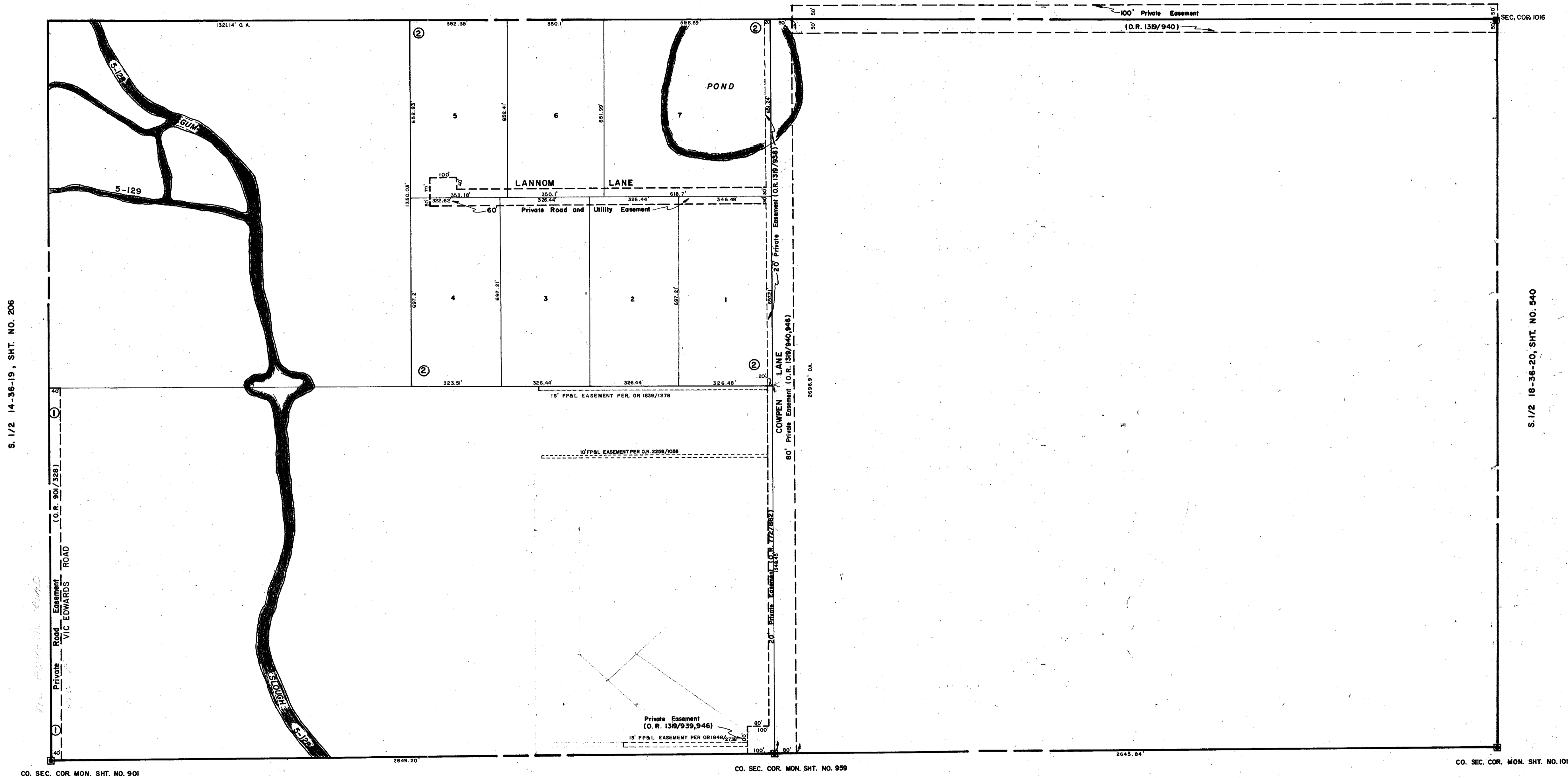


N. 1/2 13-36-19, SHT. NO. 203



S. 1/2 14-36-19, SHT. NO. 206

S. 1/2 18-36-20, SHT. NO. 540

CO. SEC. COR. MON. SHT. NO. 901

CO. SEC. COR. MON. SHT. NO. 999

CO. SEC. COR. MON. SHT. NO. 1017

N. 1/2 24-36-19, SHT. NO. 225

SUBDIVISION INDEX

NO.	NAME	P. B.
1.	KACHINA ACRES	21/19
2.	LAURALAND SUBDIVISION	27/34

- LEGEND:
- ☐ County Section Corner Monument
  - ⊙ County Bench Mark
  - Permanent Ref. Mon. for Subs.
  - ① Subdivision Index Number

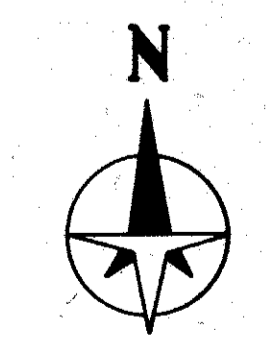
REVISIONS	
DATE	DESCRIPTION
DEC. 1980	Redrawn and added LAURALAND SUBDIVISION per P. B. 27/34
JULY 1986	15' FPAL EASEMENT PER OR 1648/2738
JULY 1986	15' FPAL EASEMENT OR 1338/1578
SEPT 1987	ADDED CANAL NUMBERS
JUL 1991	ADDED FPAL EASEMENT OR 2258/1058

SARASOTA COUNTY, FLORIDA

Scale: 1" = 200'

Date: 31, December, 1980

S. 1/2 SECTION 13  
TWP. 36 S., RGE. 19E.



Sheet No.  
204