

N. 1/2 16-36-19, SHT. NO. 209

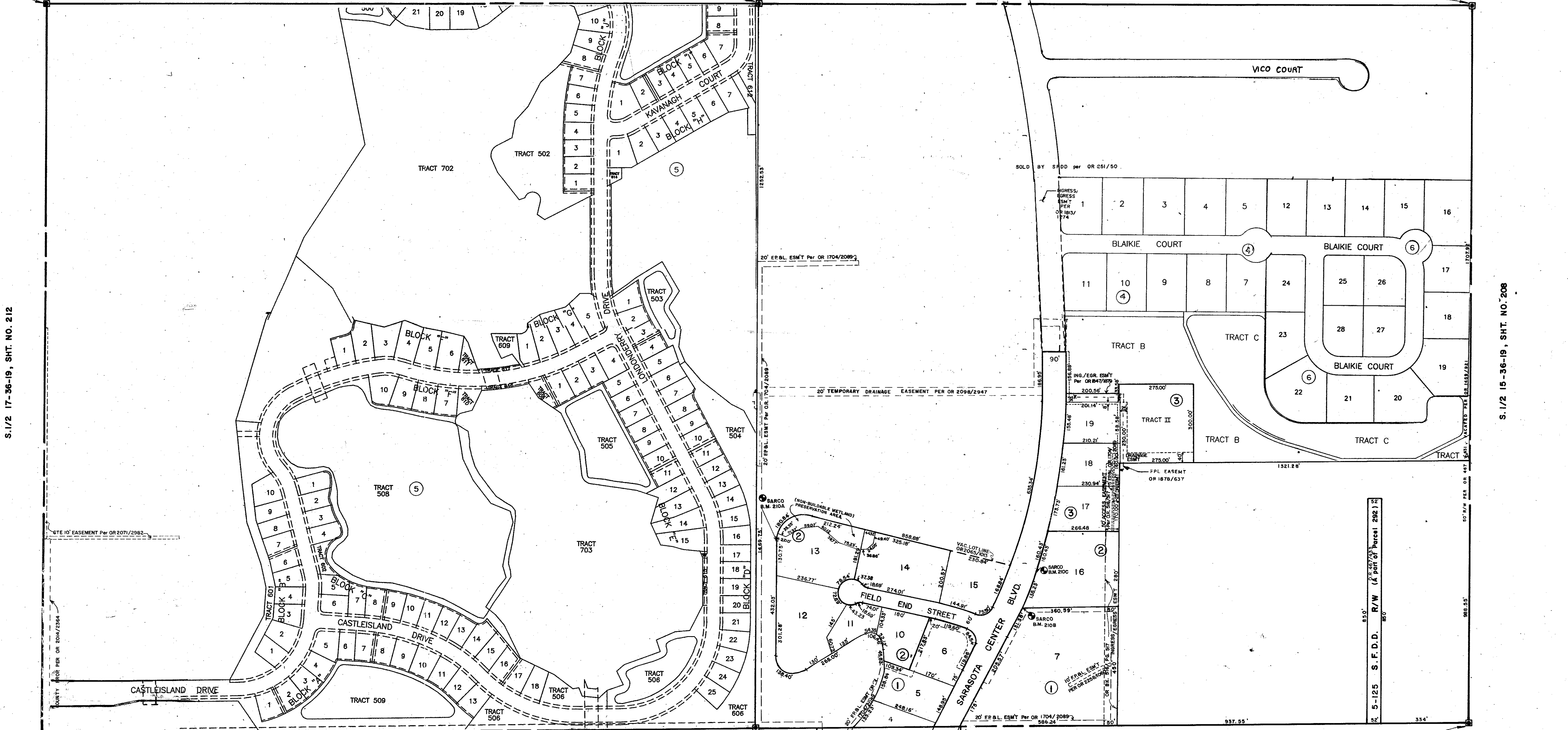
CO. SEC. COR. MON. SHT. NO.

CO. SEC. COR. MON. SHT. NO.

CO. SEC. COR. MON. SHT. NO. 674

S. 1/2 17-36-19, SHT. NO. 212

S. 1/2 15-36-19, SHT. NO. 208



CO. SEC. COR. MON. SHT. NO. 571

CO. SEC. COR. MON. SHT. NO. 622

CO. SEC. COR. MON. SHT. NO. 675

N. 1/2 21-36-19, SHT. NO. 219

SUBDIVISION INDEX

NO.	NAME	
1.	SARASOTA INTERNATIONAL TRADE CENTER	PB 23/45,45A
2.	SARASOTA INTERNATIONAL TRADE CENTER UNIT II	PB 30/7,7A
3.	SARASOTA INTERNATIONAL TRADE CENTER UNIT III	PB 31/4
4.	SARASOTA INTERNATIONAL TRADE CENTER UNIT IV	PB 35/18
5.	TATUM RIDGE PB40 PG49	
6.	SARASOTA INTERNATIONAL TRADE CENTER UNIT IV, PHASE 2 PB42PG13	

LEGEND:

- ☐ County Section Corner Monument
- County Bench Mark
- Permanent Ref. Mon. for Subs.
- ① Subdivision Index Number

DATE	DESCRIPTION
AUG 1981	Added FPBL ESM'T PER O.R. 208/2089
APR 1982	Added TEMPORARY DRAINAGE PER O.R. 1450/921
APR 1983	Corrected R/W error - TATUM RIDGE
JUN 1983	Saraso International Trade Center Unit II
APR 1985	Removed 21/18
OCT 1985	Added SARCO BENCH MARKS 210A & 210B
JUN 1986	20' FR.L. ESM'T PER O.R. 1815/274
APR 1986	SARASOTA INTERNATIONAL TRADE CENTER UNIT III, PER PB 31/4
APR 1986	Added HIGHRESS/EGRESS ESM'T PER O.R. 516/917
OCT 1986	20' FR.L. ESM'T PER O.R. 1704/2089
JAN 1987	FPAL ESM'T PER O.R. 1878/637
APRIL 1987	ADDED STREET TO FIELD END TO CORRECT ROAD NAME

SARASOTA COUNTY, FLORIDA

Scale: 1" = 200' Date: January, 1981

Drawn By: Steve Burkholder

S 1/2 SECTION 16, TWP 36 S., RGE. 19 E.

Sheet No. **210**