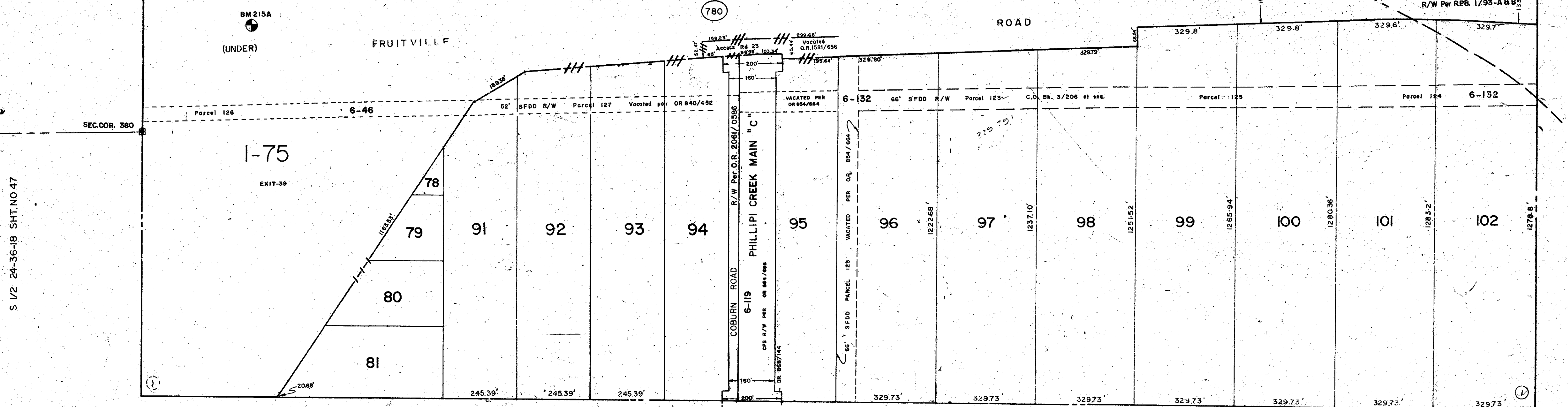
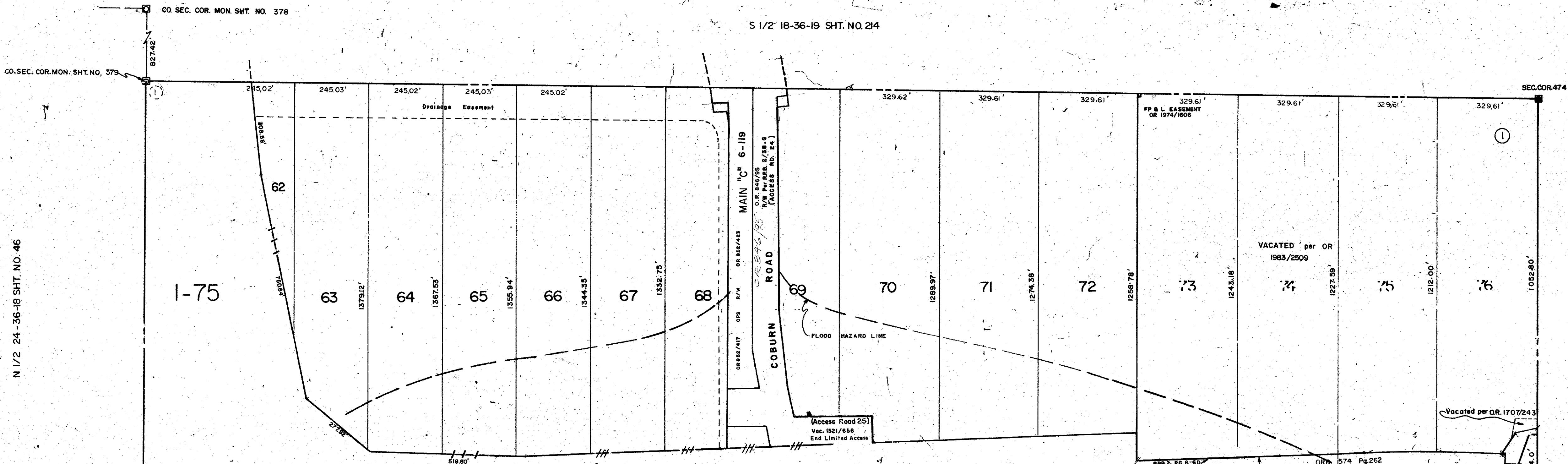


S 1/2 18-36-19 SHT. NO. 214



S 1/2 19-36-19 SHT NO 216

**SUBDIVISION INDEX**

No.	Name
1	PALMER FARMS, FIRST UNIT 2/216A

**LEGEND**

- DOT. Limited Access R/W
- ⊙ PERM. REF. MON. (for Subs)
- CONC. MON.
- IRON PIPE
- CO. SEC. COR. MON. (New Number)

DATE	DESCRIPTION	BY
SEPT 1964	REDRAWN	JNY
AUG 1965	CON PERM SLOUGH ADDED	JNY
JUNE 1970	FRUITVILLE ROAD ROW CHANGE, O.R.B 572 Pg. 265	JNY
JULY 1976	CON PERM SLOUGH, Revised	JNY
MAY 1977	O.R. 114 12/282	JNY
SEP 1977	O.R. 159/1503-175	JNY
MAY 1978	SPLIT LOTS 92, 93, 94, 95, 96, 97, 98, 99, 100, 101, 102, O.R. III/464	JNY
MAY 1978	CON PERM SLOUGH PROJECT	JNY
MAY 1981	REMOVED ACCESS ROAD No. 23 C. 28, per OR1621/686	JNY
SEP 1981	Vacated P.O. Access Road per D.O.T.	JNY
JAN 1982	COBURN RD. per Street Signs	JNY

SARASOTA COUNTY FLORIDA  
SCALE 1" = 200'  
SEPT. 1964

N 1/2 SECTION 19  
TWP. 36 S. RNG. 19 E.

SHT. NO.  
**215**

