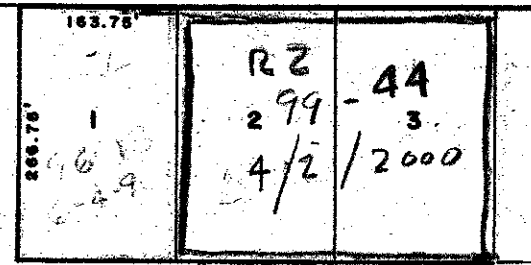
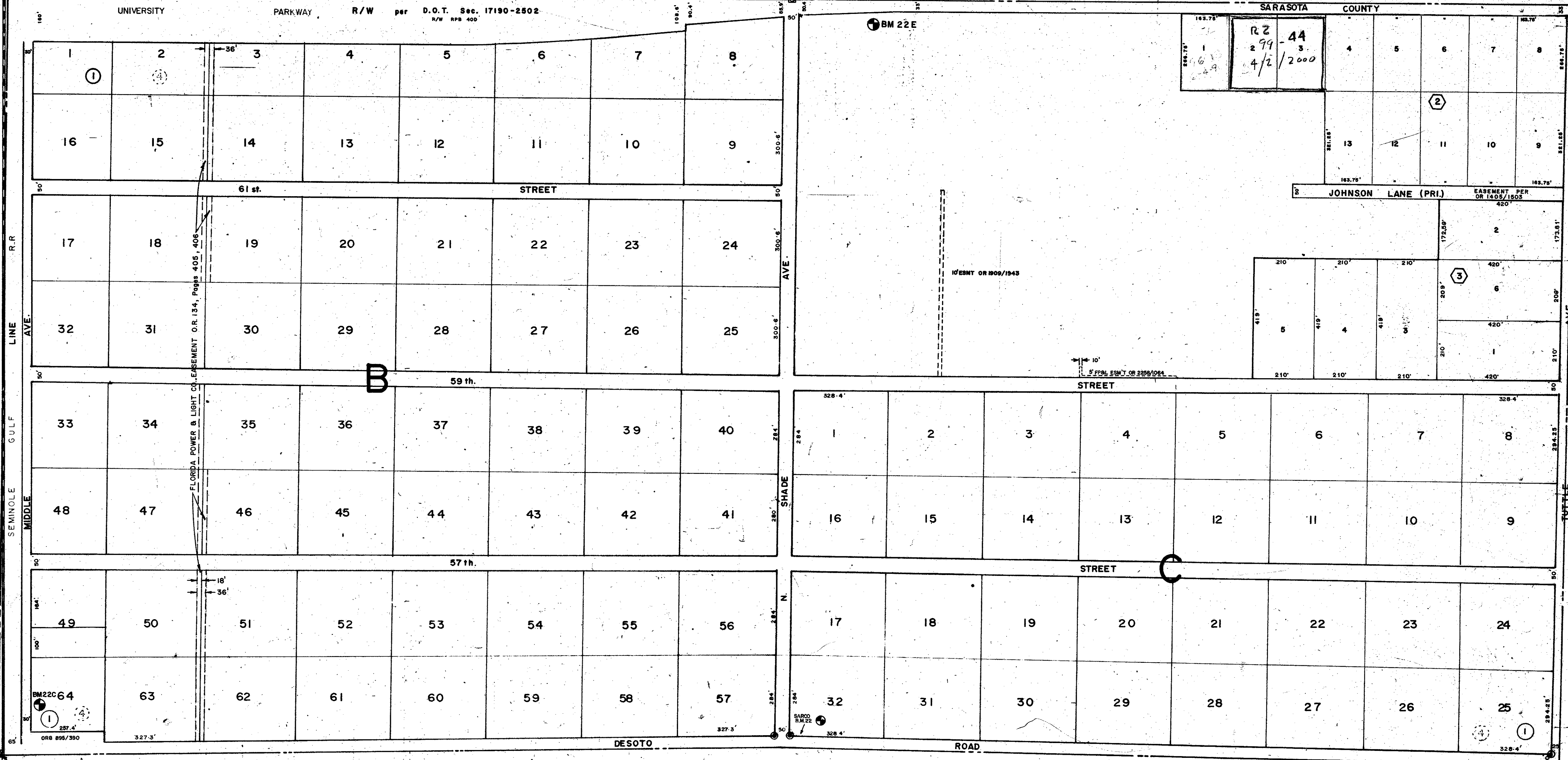


CO. SEC. COR. MON. SHT. NO. 66

CO. SEC. COR. MON. SHT. NO. 67

CO. SEC. COR. MON. SHT. NO. 112

MANATEE COUNTY SARASOTA COUNTY



N 1/2 6-36-18 SHT. NO. 24

N 1/2 4-36-18 SHT. NO. 20

S 1/2 5-36-18 SHT. 23

SUBDIVISION INDEX

No.	Name
1	DESOTO ACRES 4/42
2	W. H. JOHNSON, Jr. N/C, Feb. 1957
3	N/C, May 1958
4	UNITIVAM DAME EST. 3/27

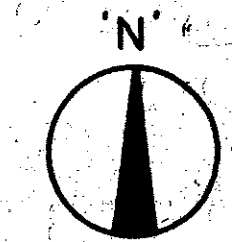
- LEGEND.**
- Bench Mark (R-restored)
 - ⊙ PERM. REF. MON. (for Sub)
 - CONC. MON. (NEW NUMBERS)
 - IRON PIPE
 - ⊙ NONCONFORMING SUB. INDEX NO.

ALTERATIONS

DATE	DESCRIPTIONS
JAN 1964	REDRAWN
MAY 1967	SPLYS. & REVISIONS
AUG. 1968	RE-NAMED R.R.
JULY 1972	SPLIT
NOV. 1973	F.P.B.L. Eas. '73
JUN. 1977	R/W Change DESOTO RD. ORB 895/390
JAN. 1978	F.P.B.L. EASE. OR 134, P. 405, 406
AUG. 1981	Private Easement over Johnson Lane per OR 1405/1503
OCT. 81	ADDED N/C SUB TO INDEX
MAY 1982	COUNTY LINE ROAD R/W per D.O.T. Sec. 17190-2502

SARASOTA COUNTY, FLORIDA. SCALE: 1" = 200' JAN. 1964

N 1/2 SECTION 5 TWP. 36 S. RNG. 18 E



SHT. NO. 22