

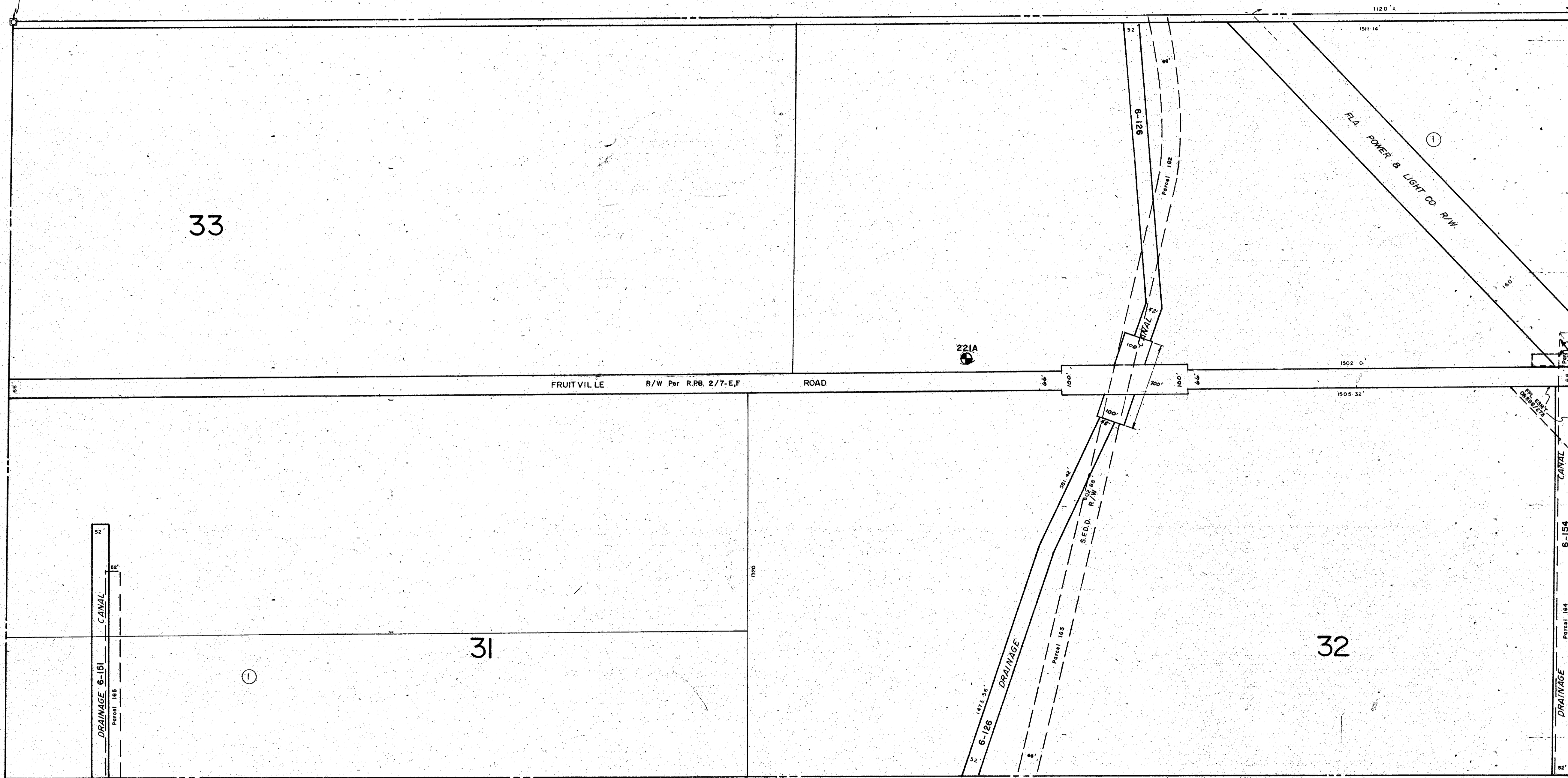
CO. SEC. COR. MON. SHT. NO. 675

S 1/2 15-36-19 SHT. NO. 208

CO. SEC. COR. MON. SHT. NO. 784

N 1/2 21-36-19 SHT. NO. 219

N 1/2 23-36-19 SHT. NO. 223



S 1/2 22-36-19 SHT. NO. 222

**SUBDIVISION INDEX**

No.	Name
1	PALMER FARMS 3rd. UNIT 3/39

- LEGEND**
- ⊙ PERM. REF. MON. (for Subs)
  - CONC. MON.
  - IRON PIPE
  - ☒ CO. SEC. COR. MON. (NEW NUMBERS)

DATE	ALTERATIONS DESCRIPTION	BY
SEPT. 64	RE-DRAWN	JNY
NOV. 64	SPLITS & REVISIONS	RJS
DEC. 1964	S.F.D.D. R/W per C.O. Bk. 3/206 of sec. Parcels 161-165	RJS
NOV. 1966	ADDED S.F.D.D. R/W per 164 Per EMERSON	RJS
SEPT. 1967	ADDED CANAL NUMBERS	RJS
APR. 1968	ADDED BM 221A FORMERLY 225A	SCB
FEB. 1969	IF PL. EASEMENT OR 456/273	JFJ
JULY 1969	CORRECTED FRUITVILLE RD. R/W 509	JFJ
APRIL 1970	ADJUSTED PERM. REF. MON. 221A	JFJ

SARASOTA COUNTY, FLORIDA.  
SCALE 1" = 200' SEPT. 1964

N 1/2 SECTION 22  
TWP. 36 S. RNG. 19 E.

SHT. NO.  
221