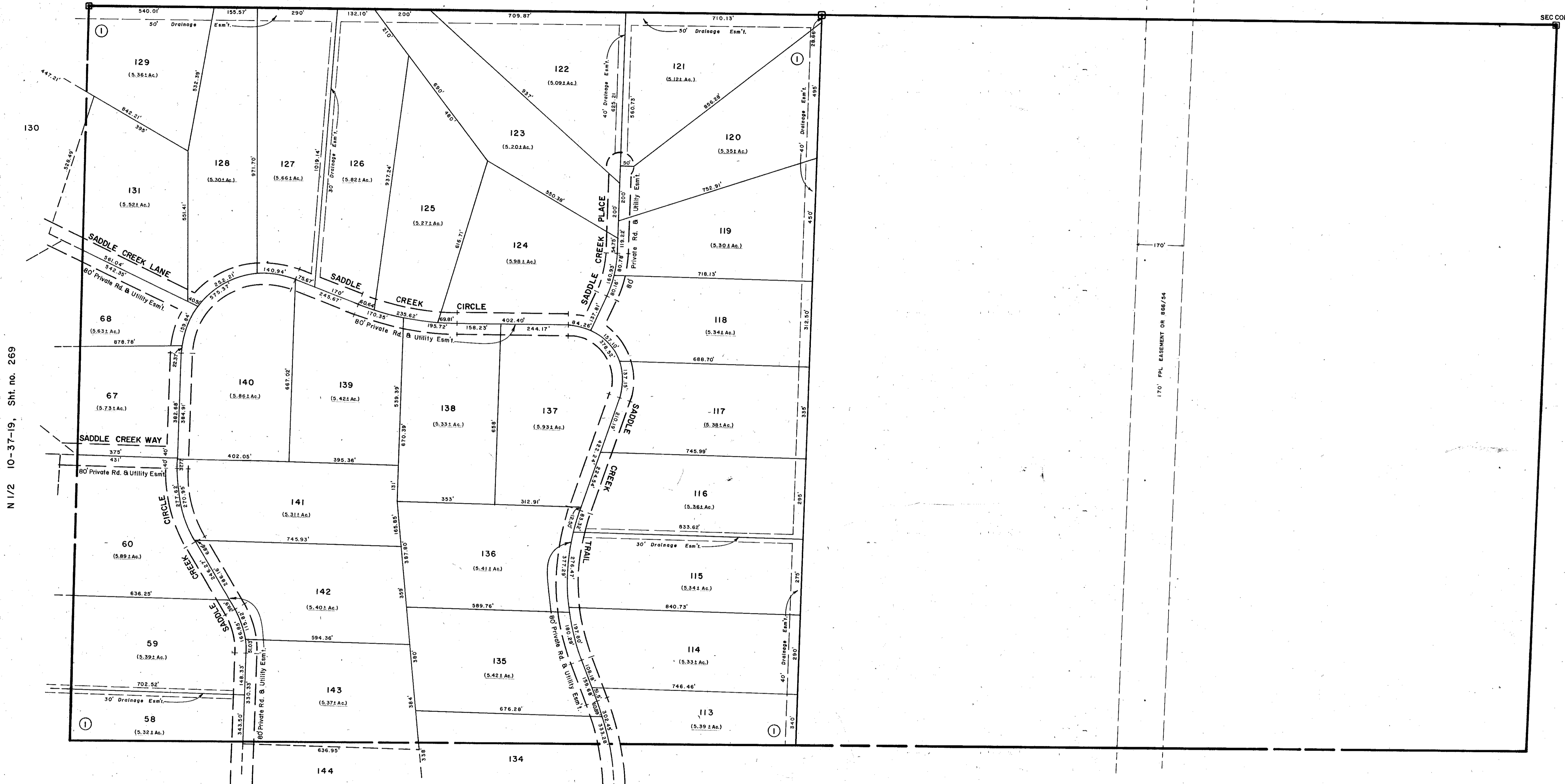


SEC. COR. 792

SEC. COR. 851

SEC. COR. 909



N 1/2 10-37-19, Sht. no. 269

N 1/2 12-37-19, Sht. no. 273

**SUBDIVISION INDEX**

NO. 1. SADDLE CREEK Unit 3 28 / 30-30D

S 1/2 11-37-19, Sht. no. 272

**LEGEND:**

- ☐ County Section Corner Monument
- ⊕ County Bench Mark
- Permanent Ref. Mon. for Subs.
- ① Subdivision Index Number

REVISIONS	
DATE	DESCRIPTION
APRIL 1982	Added SADDLE CREEK UNIT 3 SECTION CORNERS - DNR'S
NOV 1982	170' FPL EASEMENT OR 866/54
FEB 1983	

**SARASOTA COUNTY, FLORIDA**

Scale: 1" = 200' Date: APRIL 1982

N 1/2 SECTION 11  
TWP. 37 S., RGE. 19 E.

Sheet No.

271

