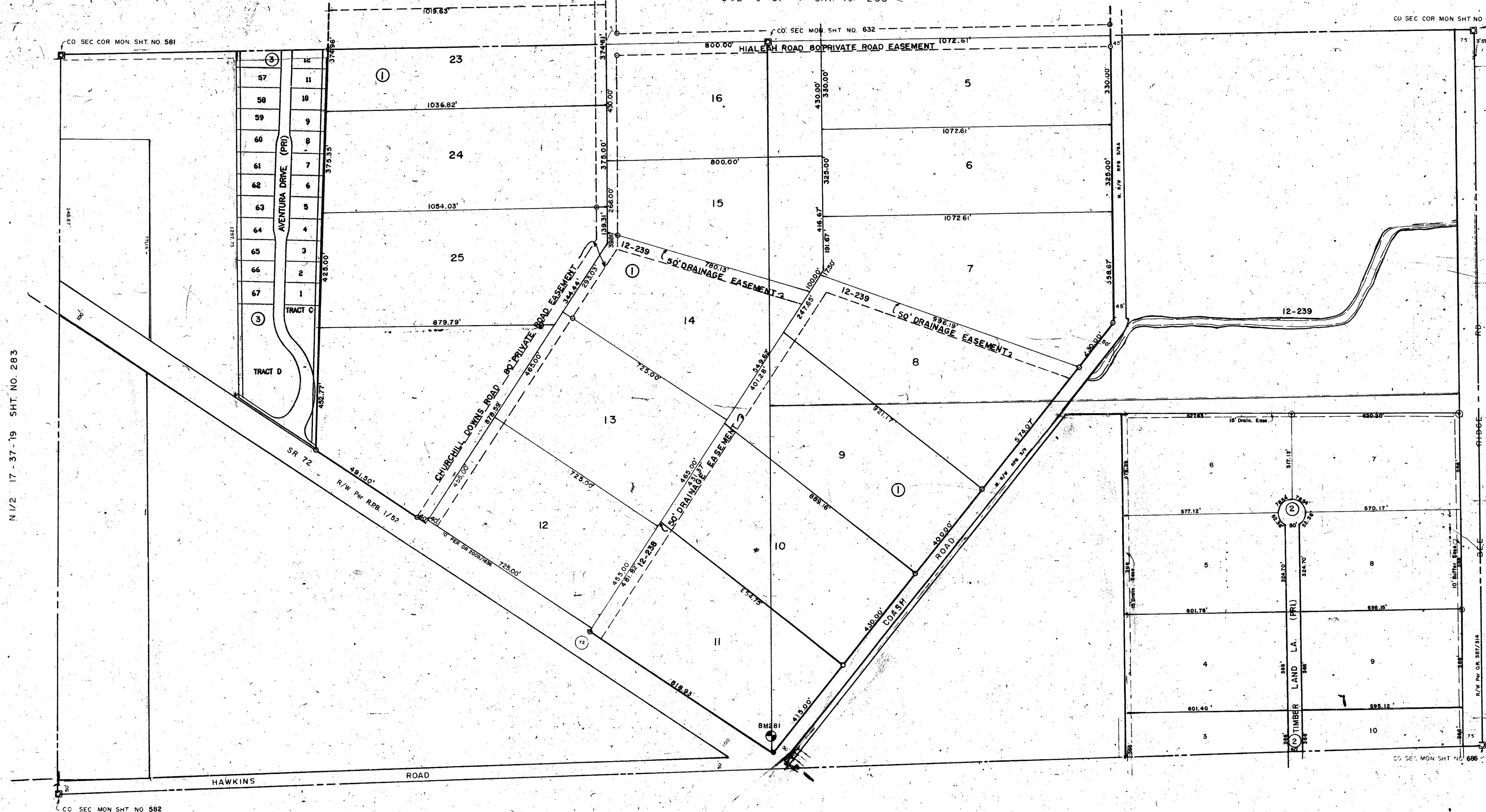


S 1/2 9-37 SHT. NO. 268

CO SEC COR MON SHT NO 685

CO SEC COR MON SHT NO 581

CO SEC MON SHT NO. 632



N 1/2 17-37-19 SHT. NO. 283

N 1/2 15-37-19 SHT. NO. 279

CO SEC MON SHT NO 582

S 1/2 16-37-19 SHT NO 282

CO SEC MON SHT NO 686

SUBDIVISION INDEX

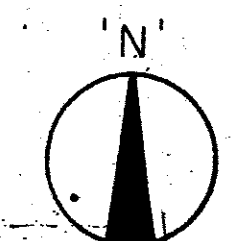
No.	Name
1	SARASOTA PLANTATIONS 19/25, 25A
2	Timber Land Ranchettes, 22/41
3	EASTLAKE PB36/48

- LEGEND**
- PERM. REF. MON. (for subs.)
 - CONC. MON.
 - IRON PIPE
 - CO SEC. COR. MON. (NEW NUMBERS)
 - CO BENCH MARK

DATE	DESCRIPTION
APR. 1953	ADDED 10' R/W PER OR 2007/154
NOV. 1957	ADDED 10' R/W PER OR 2007/154
NOV. 1957	ADDED SARASOTA PLANTATIONS
JUNE 1958	TIMBER LAND RANCHETTES ADDED
SEP. 1958	REVISED SECTION CORNER NUMBERS
DEC. 1958	CORRECTED PROCTOR ROAD NAME
DEC. 1958	CHANGED PROCTOR RD TO SR 72
MAY 1962	REMOVED 5' STRIP ALONG BEE RIDGE RD. Per E. EMERSON
JULY 1962	COASH RD. R/W per RPB 3/79-9C, OR 1869/0887
MAY 1967	ADDED 10' R/W PER OR 2007/154

SARASOTA COUNTY FLORIDA
SCALE 1" = 200'
MAR. 1965

**N 1/2 SECTION 16
TWP. 37 S. RNG. 19 E.**



SHT. NO.
281