

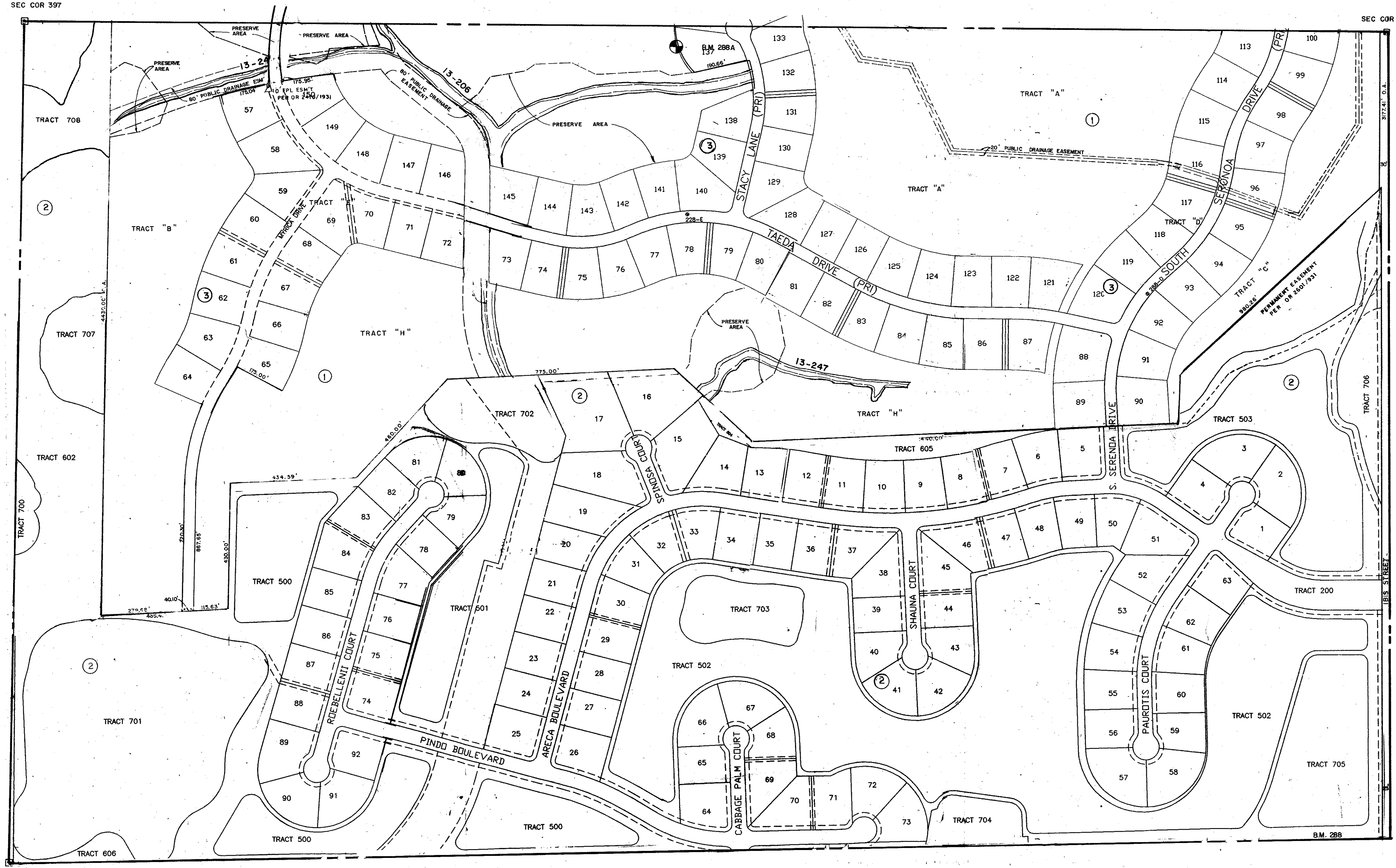
SEC COR 397

SEC COR 488

S 1/2 24-37-18 SHT. NO. 118

S 1/2 20-37-19 SHT. NO. 290

SEC COR 398



SUBDIVISION INDEX

1	SERENOA	PB. 34, P.40
2	SERENOA LAKES	PB40/31
3	PHASE 3	PB36/32

- LEGEND:
- ☐ County Section Corner Monument
 - ⊙ County Bench Mark
 - ⊙ Permanent Ref. Mon. for Subs.
 - ① Subdivision Index Number

DATE	REVISIONS	DESCRIPTION	BY
FEB 1978	CPS PROJ AS PER SWN PROJ NO 778		JSD
JAN 1979	1818 AVE R/W PER OR 82/434		JWE
JUNE 1982	CORRECTED SEC. CORNER NUMBERS		JRY
MAY 1983	SECTION CORNER DNR 4		JWC
FEB 1987	ADDED B.M. 288 & 289A.		CWC
SEP 1987	REDRAWN		RAJ
OCT 1987	ADDED DRAINAGE DITCHES & NUMBERS		RAJ
AUG 1990	CHANGED 1818 AVE. TO 1818 STREET		KAM
NOV 1990	ADDED SERENOA, SUBD., P.B. 34, S. 40		KAM
MAR 1993	ADDED PERM. EASEMENT PER OR 287/407		JFS
MAR 1993	ADDED PERM. EASEMENT PER OR 280/1931		JFS

SARASOTA COUNTY, FLORIDA

Scale: 1" = 200' Date: NOV 1990

Drawn By: M.J.H.

S 1/2 SECTION 19

TWP 37, RNG 19

Sheet No.

288

