

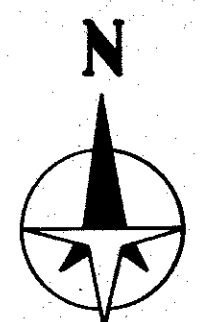
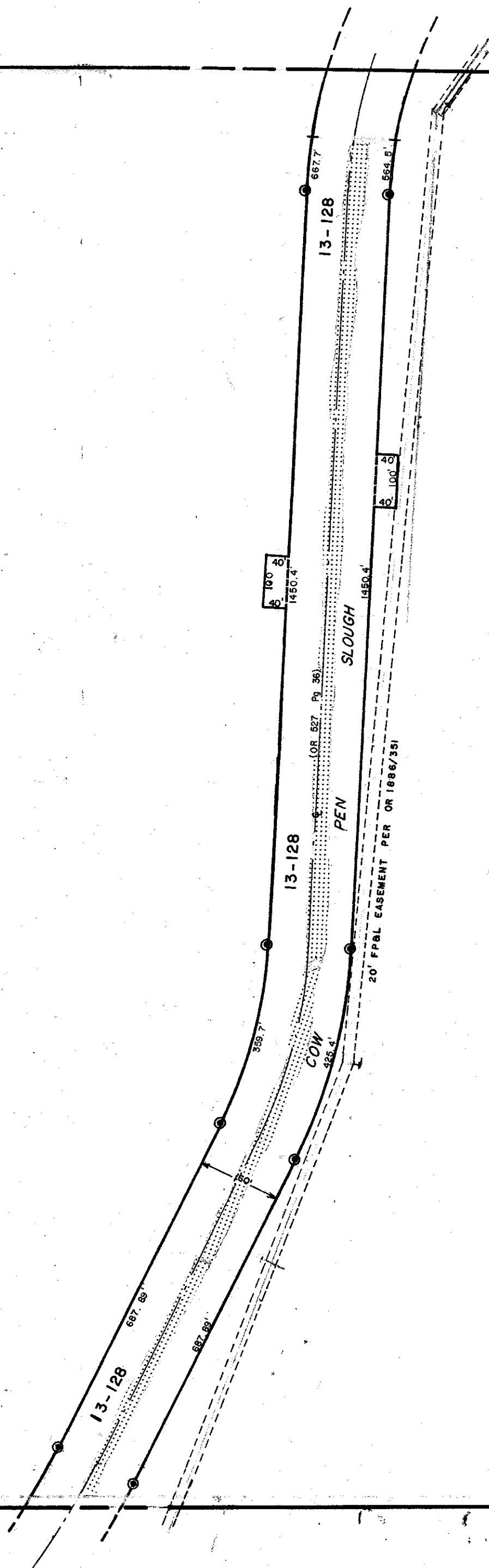
N 1/2 22-37-19, Sht. No. 293

S 1/2 21-37-19, Sht. No. 292

S 1/2 23-37-19, Sht. No. 296

N 1/2 27-37-19, Sht. No. 303

SEC. COR. 798



LEGEND:

- County Section Corner Monument
- Permanent Reference Monument
- Permanent Ref. Mon. for Subs.
- ① Subdivision Index Number
- Drainage

REVISIONS	
DATE	DESCRIPTION
JAN 1987	CORRECTED SOUTH SECTION LINE
JAN 1987	ADDED FPEL EASEMENT PER OR 1886/301
OCT 1987	ADDED DRAINAGE DITCH NUMBERS

SARASOTA COUNTY, FLORIDA

Scale: 1" = 200' Date: May 1975
Drawn By: S. K. B.

S 1/2 Section 22
Twp. 37 S. Rng. 19 E.

Sheet No.

294

BRUNING 44-511 16772