

S. 1/2 14-37-19, Sht. No. 278

SEC. COR. 855

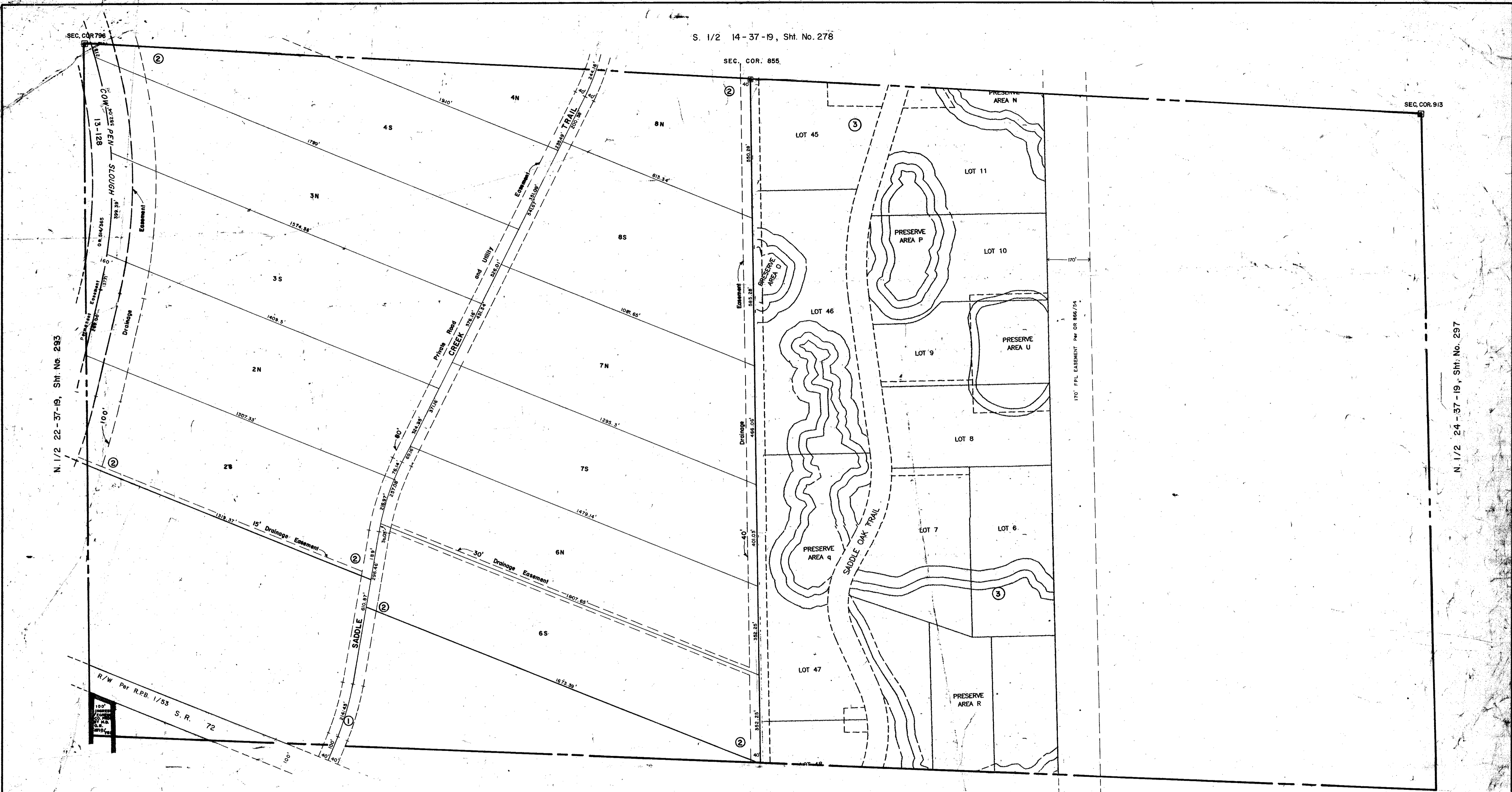
SEC. COR. 913

S. 1/2 23-37-19, Sht. No. 296

SEC. COR. 796

N. 1/2 22-37-19, Sht. No. 293

N. 1/2 24-37-19, Sht. No. 297



SUBDIVISION INDEX

| No. | Name | |
|-----|----------------------|------------|
| 1. | SADDLE CREEK, Unit 1 | 26/27-27 C |
| 2. | SADDLE CREEK, Unit 2 | 27/11-IIA |
| 3. | SADDL OAKS ESTATES | PB 40/42 |

- LEGEND:**
- ⊠ County Section Corner Monument
 - ⊕ County Bench Mark
 - Permanent Ref. Mon. for Subs.
 - ① Subdivision Index Number

| REVISIONS | |
|-----------|---|
| DATE | DESCRIPTION |
| AUG 1979 | Added SADDLE CREEK, Unit 1 |
| July 1980 | Added SADDLE CREEK, Unit 2 |
| AUG 1981 | Private R.E. Easement PM OR 1468/826 |
| NOV 1982 | SECTION CORNERS - DRR#4 |
| DEC 1986 | ADDED MAJOR C&G FROM Warranty Deed, O.R. 1910/785 |
| OCT 1987 | ADDED DRAINAGE DITCH NUMBER |
| FEB 1989 | 170' FPL EASEMENT OR 866/54 |

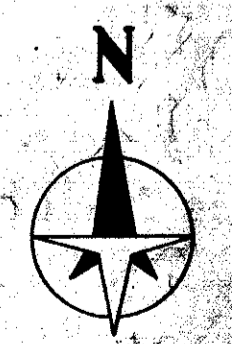
SARASOTA COUNTY, FLORIDA

Scale: 1" = 200'

Date: March, 1977

**N. 1/2 Section 23
Twp. 37 S.-Rge 19 E.**

Sheet No. **295**



BRUNING 44-511 16772