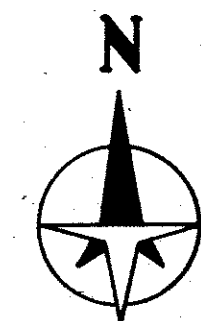
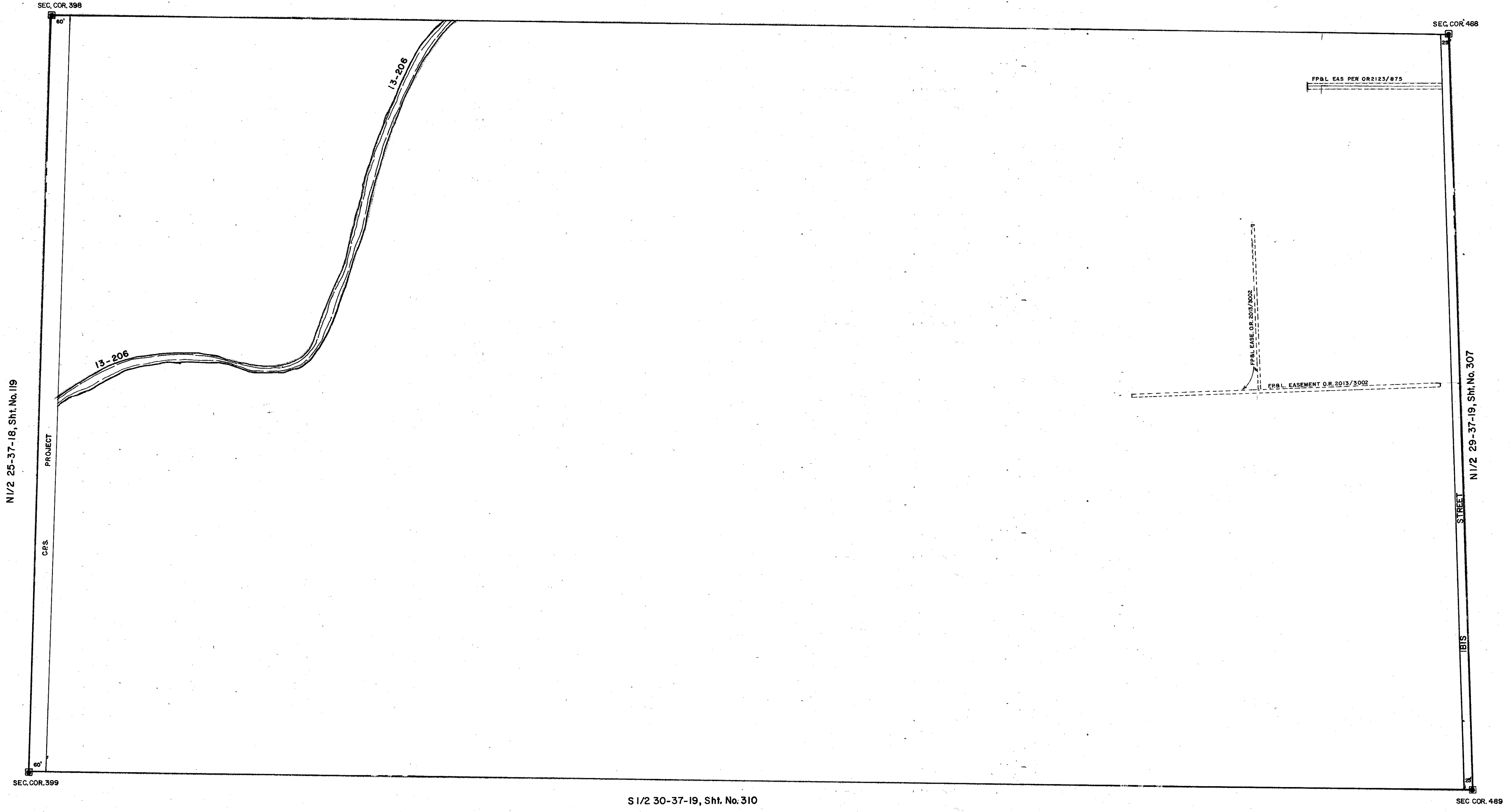


S 1/2 19-37-19, Sht. No. 288



- LEGEND:**
- ▣ County Section Corner Monument
  - ▣ County Bench Mark
  - Permanent Ref. Mon. for Subs.
  - ① Subdivision Index Number

REVISIONS	
DATE	DESCRIPTION
NOV 1987	ADDED DRAINAGE DITCH & NUMBERS
APR 1988	FP&L EASEMENT (12') O.R. 2013/3002
AUG 1989	FP&L EAS PER OR 2123/875
AUG 1990	CHANGED IBIS AVE. TO IBIS STREET

**SARASOTA COUNTY, FLORIDA**

Scale: 1" = 200' Date: MAY 1987

Drawn By: RJJ

**N 1/2 SECTION 30  
TWP 37S.-RNG. 19 E.**

Sheet No.  
**309**