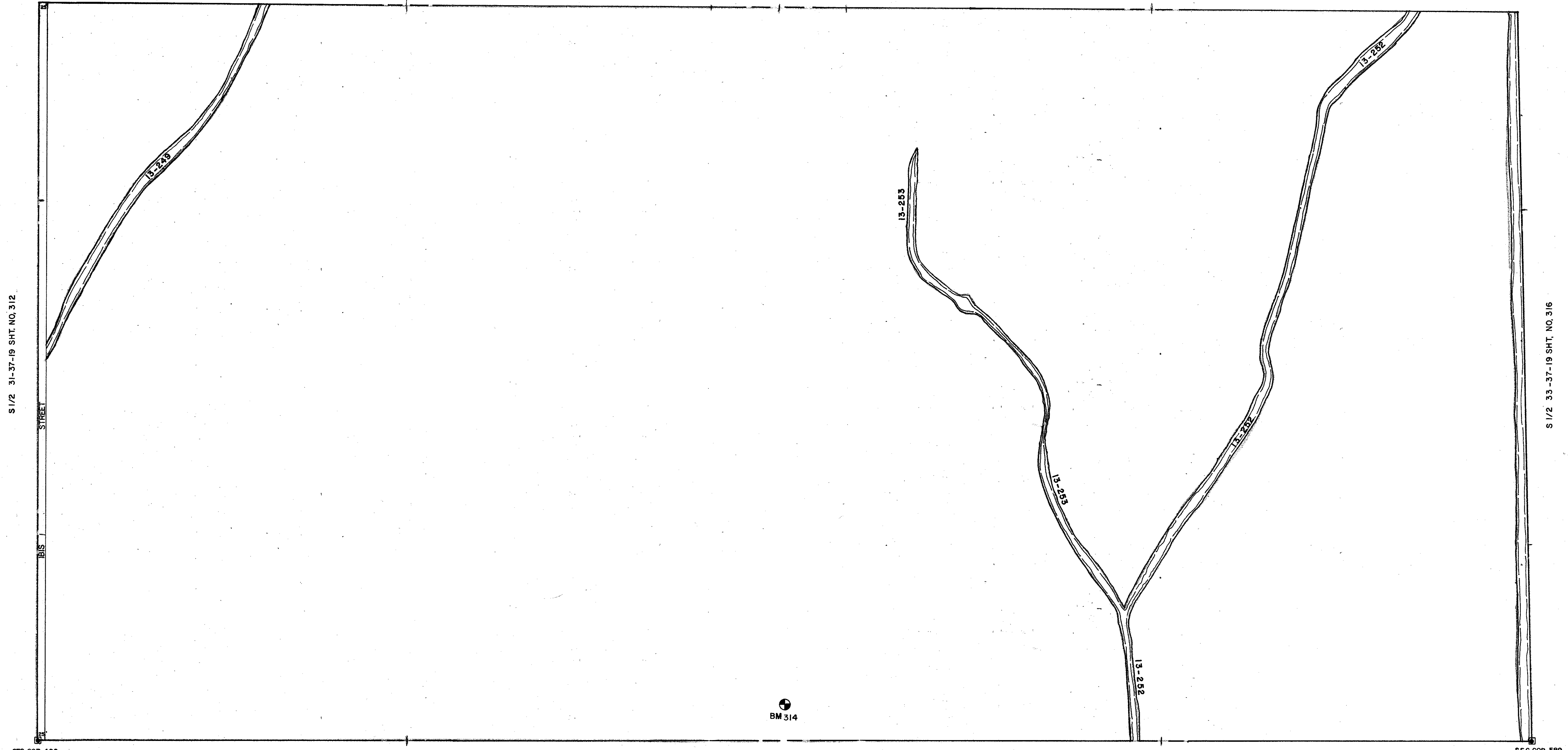
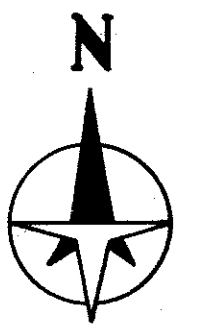


N 1/2 32-37-19 SHT, NO. 313



N 1/2 5-38-19 SHT, NO 331



LEGEND:

- ☐ County Section Corner Monument
- ⊠ County Bench Mark
- Permanent Ref. Mon. for Subs.
- ① Subdivision Index Number

REVISIONS	
DATE	DESCRIPTION
NOV 1987	ADDED DRAINAGE DITCHES & NUMBERS
AUG 1990	CHANGED 1818 AVE. TO 1818 STREET

SARASOTA COUNTY, FLORIDA
 Scale: 1" = 200' Date: April 1987
 Drawn By: RJJ

**S 1/2 SECTION 32
 TWP 37S.-RNG. 19 E.**

Sheet No.
 314