

SEC. COR. 40A

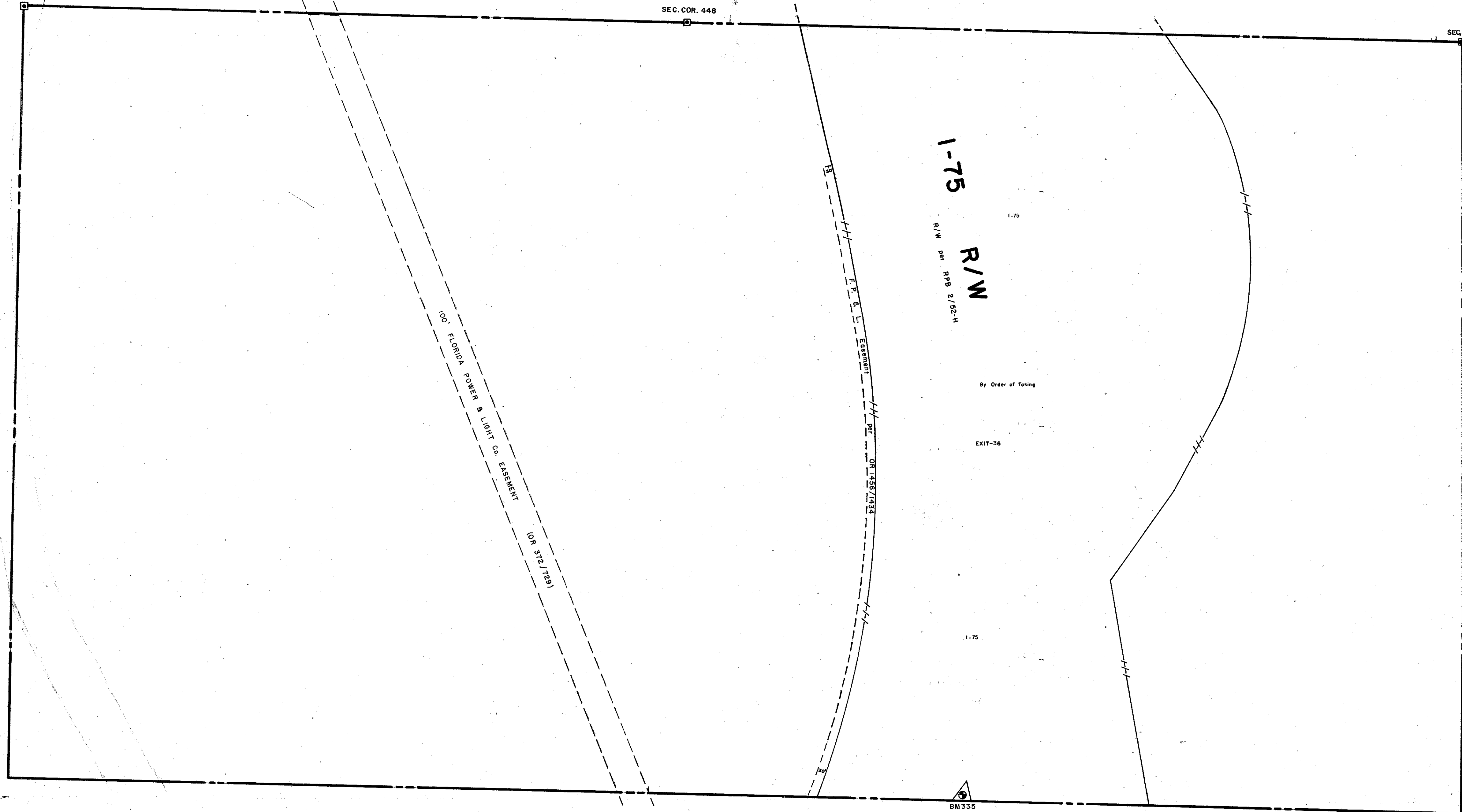
S 1/2 6-38-19, Sht. No. 334

SEC. COR. 448

SEC. COR. 494

N 1/2 12-38-18, Sht. No. 151

N 1/2 8-38-19, Sht. No. 337



S 1/2 7-38-19, Sht. No. 336



LEGEND

- D.O.T. Limited Access R/W
- ☐ County Section Corner Monument
- ⊕ County Bench Mark
- Permanent Ref. Mon. for Subs.
- ① Subdivision Index Number

REVISIONS	
DATE	DESCRIPTION
MARCH 1977	1-75, By Order of Taking
FEB. 1978	F.P. & L. Co. EASEMENT - OR 372/1281
AUG. 1981	F.P. & L. Co. EASEMENT per OR 1456/1434
JUN. 1982	Added SECTION CORNER NUMBERS
FEB. 1983	ADDED BM 335
FEB. 1983	ADDED 1-75 EXIT NO.

SARASOTA COUNTY, FLORIDA

Scale: 1" = 200' Date: Dec., 1973

N. 1/2 Section 7
Twp. 38 S - Rge. 19 E.

Sheet No.

335

BRUNING 44-511 16772