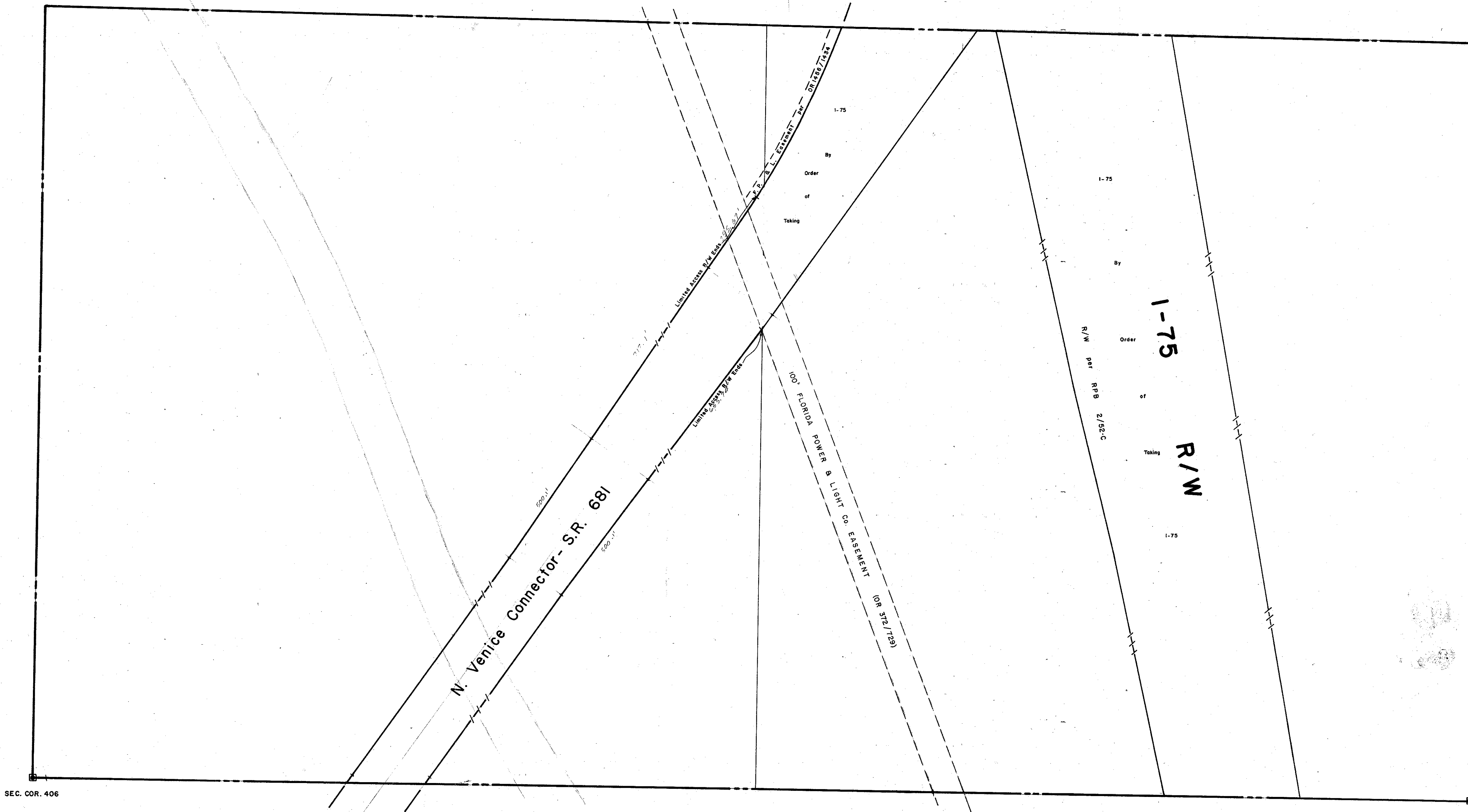


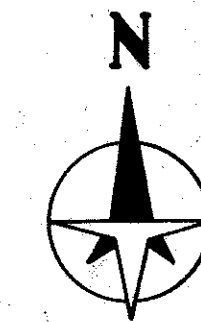
N 1/2 7-38-19, Sht. No. 335

S 1/2 12-38-18, Sht. No. 152

S 1/2 8-38-19, Sht. No. 338



N 1/2 18-38-19, Sht. No. 357



LEGEND

- /// — D.O.T. Limited Access R/W
- ☐ — County Section Corner Monument
- ⊙ — County Bench Mark
- — Permanent Ref. Mon. for Subs.
- ① — Subdivision Index Number

REVISIONS	
DATE	DESCRIPTION
MARCH 1977	1-75, By Order of Taking
FEB. 1978	F.P. & L. Co. EASEMENT
AUG. 1981	F.P. & L. Easement per OR 1456/1434
JAN. 1985	Added D.O.T. Limited Access-3-75 & N. Venice Connector

SARASOTA COUNTY, FLORIDA

Scale: 1" = 200' Date: Dec. 1973

**S. 1/2 Section 7
Twp. 38 S - Rge. 19 E.**

Sheet No.

336

BRUNING 44-511 16772