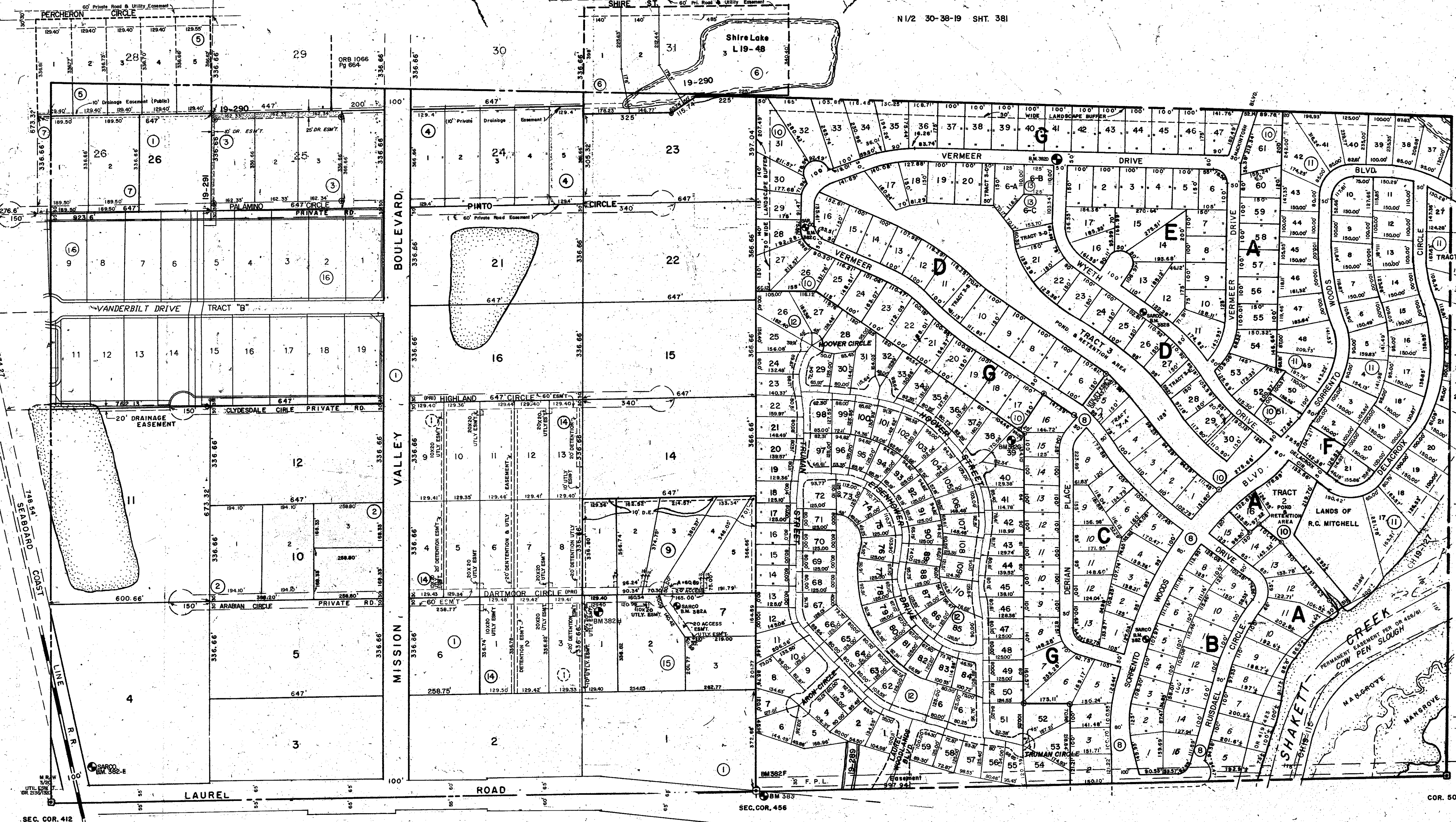
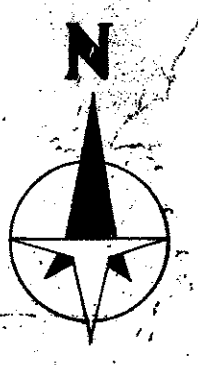


N 1/2 30-38-19 SHT. 381

N 1/2 31-38-19 SHT. NO. 383

S 1/2 29-38-19 SHT. NO. 380

COR. 502 N



SUBDIVISION INDEX

No.	Name	
1.	MISSION VALLEY ESTATES, SECTION A	N 1/2, 2-A, 2-B
2.	Arabian Court (Re-Sub. of part of Lot 10, Mission Valley, Sec. A)	23/20
3.	Pinkus Subdivision	23/41
4.	PINTO ESTATES P.B. 27/36	
5.	DECKER SUBDIVISION P.B. 28/18	
6.	LANDRY SUBDIVISION P.B. 28/17	
7.	REPLAT OF A PORTION OF TRACT 26 P.B. 28/35	
8.	SORRENTO WOODS UNIT 1	29/11
9.	BRYAN SUBDIVISION	29/32
10.	SORRENTO WOODS UNIT 2	29/41
11.	SORRENTO WOODS UNIT 3	30/18

- 12. LAUREL WOODLANDS P.B. 31/42
- 13. VERMEER SUB P.B. 31/39
- 14. EWING ESTATES P.B. 33/27
- 15. BLEEM SUBDIVISION P.B. 34/22
- 16. PRESERVE AT MISSION VALLEY P.B. 42P.46

LEGEND

- Section Corner Monument (New Numbers)
- Permanent Reference Monument
- Reference Point for Subdivisions
- Subdivision Index Number
- Drainage COUNTY BENCH MARK

DATE	DESCRIPTION
AUG 1985	COW PEN SLOUGH ADDED
AUG 1989	RE: NAME R.R.
FEB 1978	SPLITS & REVISIONS
MAY 1978	LAUREL RE: WIDENED
JULY 1975	Split Lot 25 of Mission Valley Estates, ORB 1066 Pg 664
OCT 1976	Added: PINKUS' SUB
Aug 1976	Added: FUNKER'S SUB
May 1977	Revised Sec. Line & CPs
Oct 1980	Revised Sec. Cor. Numbers
NOV 1981	Added: EWING ESTATES P.B. 27/36

ALTERATIONS

SARASOTA COUNTY FLORIDA
SCALE: 1" = 200'
JUNE 1959

S 1/2 SECTION 30
TWP. 38 S. RNG. 19 E

SHT. NO.
382