

N 1/2 31-38-19 SHT. NO. 383

N 1/2 33-38-19 SHT. NO. 387

Co. Sec. Cor. Mon. Sht. No. 502

Co. Sec. Cor. Mon. Sht. No. 502

Co. Sec. Cor. Mon. Sht. No. 503

Co. Sec. Cor. Mon. Sht. No. 551

S 1/2 32-38-19 SHT. NO. 386

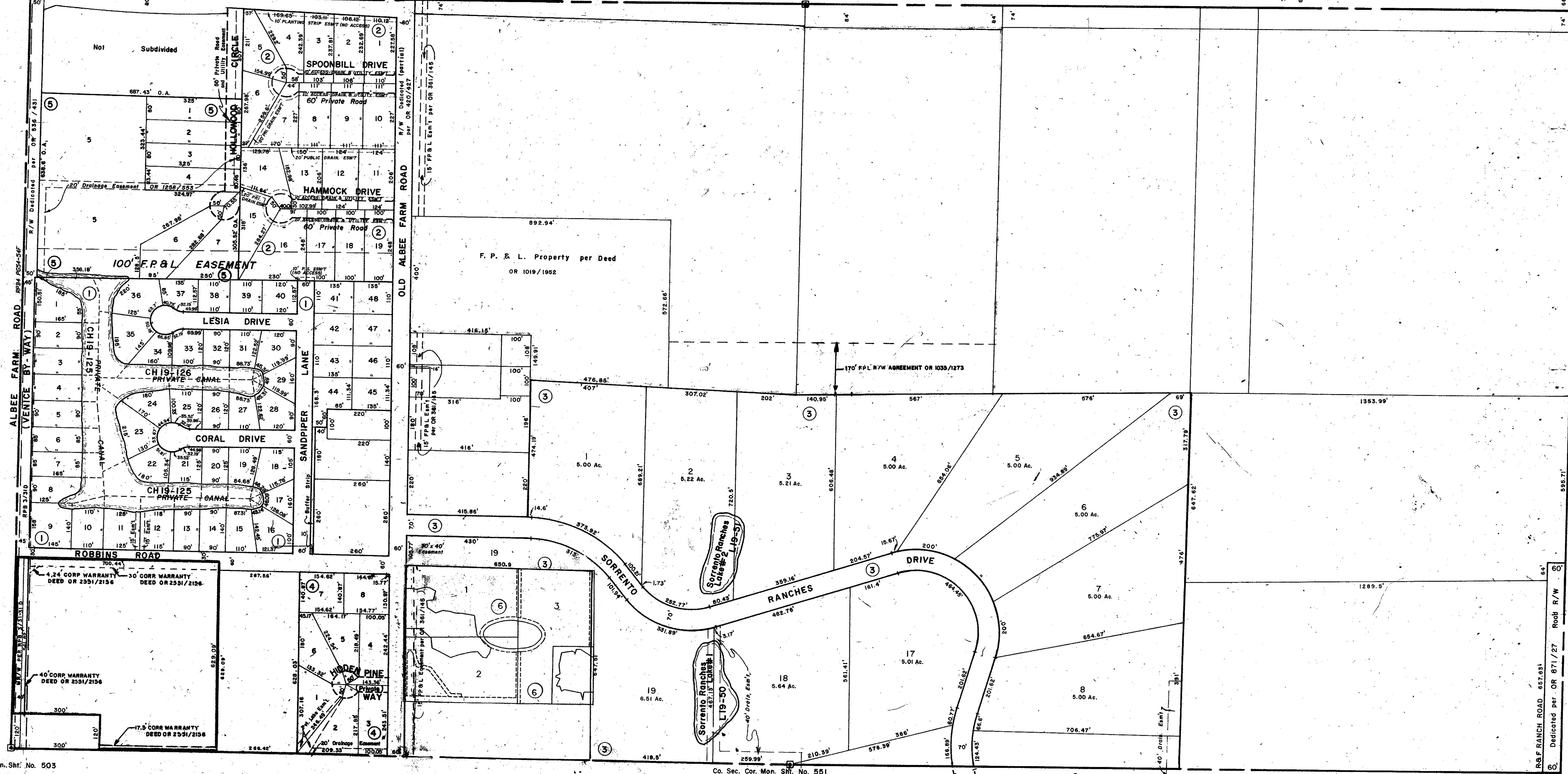
F.P. & L. Easement per DB 98/302

LAUREL

SEC. COR. 550

ROAD

NO. 599



SUBDIVISION INDEX

No.	Name	Unit	Block
1.	WATERFRONT ESTATES	Unit 2	18/22
2.	SPOONBILL HAMMOCK SUBDIVISION		25/23 & 23A
3.	SORRENTO RANCHES		26/50 & 50A
4.	HIDDEN PINES SUBDIVISION		P.B. 27/37 and 37A
5.	DRIFTWOOD ESTATES		P.B. 27/48
6.	OAK HAMMOCK ESTATES		PB41PG23

LEGEND:

- ☐ County Section Corner Monument (New No.)
- County Bench Mark
- Permanent Ref. Mon. for Subs.
- ① Subdivision Index Number

DATE	DESCRIPTION	BY
OCT. 1973	Added 170' R/W PER OR 1035/1073	JJE
APR. 1980	Added CORP WARRANTY DEED PER OR 2551/2156	JJE
FEB. 1992	Added M/R/W PER RPB 3/31-31 D, ALBEE FARM RD.	KAM
FEB. 1990	CORRECTED LAUREL ROAD	JJE
REVISIONS		
OCT. 1973	Redrawn & Added SPOONBILL HAMMOCK SUB & 20 Drain. Emt.	JJE
APR. 1980	Added SORRENTO RANCHES Subdivision	JJE
Feb. 1981	Added HIDDEN PINES SUBDIVISION	SEB
May 1981	Added DRIFTWOOD ESTATES	SEB
AUG. 1981	Designated F.P. & L. Property	JJE
JAN. 1982	Changed North Easting Line	JJE
DEC. 1982	Corrected Dimensions in SW 1/4 of NW 1/4	JJE
MAR. 1988	F.P. & L. Easement per DB 98/302	JJE
DEC. 1984	Added Drainage Ditch Number	JJE
NOV. 1987	FP&L Easements per OR 361/145	SEB
MAY 1990	Added RPB 3/31D ALBEE FARM	JJE

SARASOTA COUNTY, FLORIDA

Scale: 1" = 200' Date: October, 1978

**N 1/2 SECTION 32
TWP. 38 S. RNG. 19 E.**

Sheet No.

385

