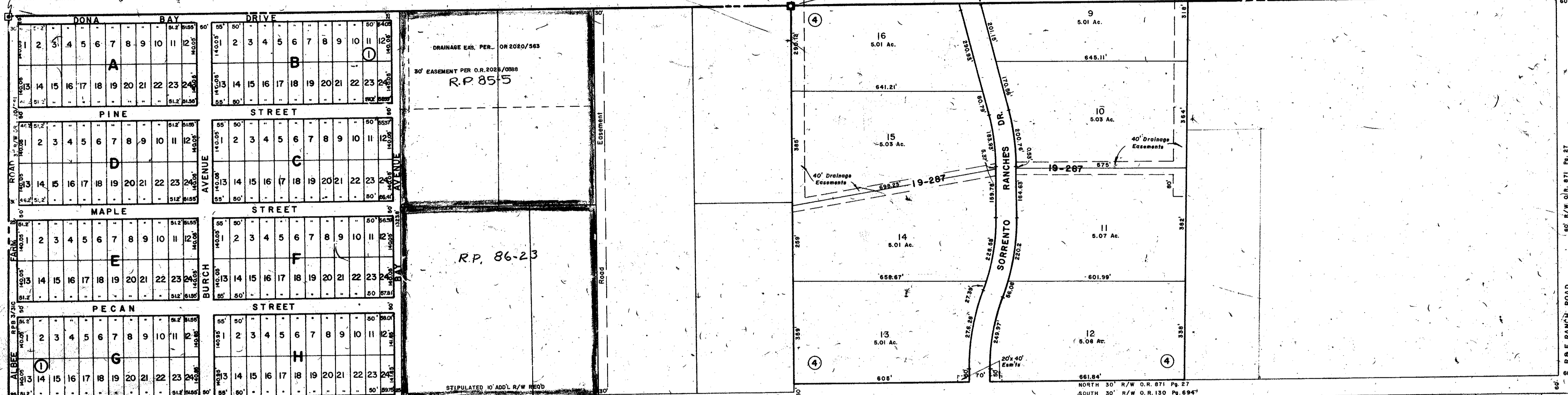


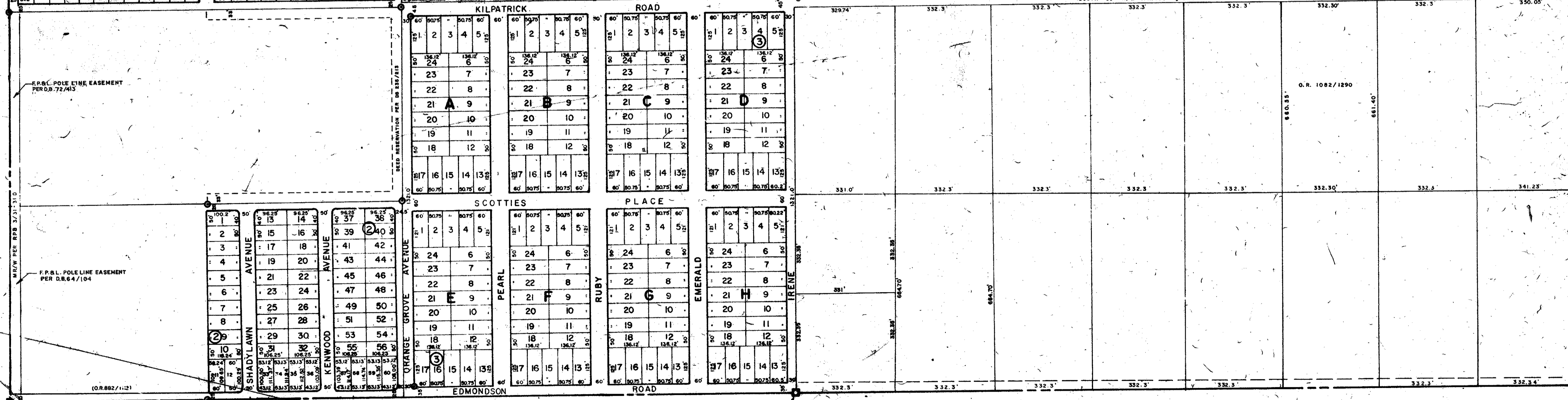
Co. Sec. Cor. Mon. No. 503

SEC. COR. 551



S 1/2 31-38-19 SHT. NO. 384

S 1/2 33-38-19 SHT. NO. 388



CO. SEC. COR. MON. SHT. NO. 552

CO. SEC. COR. MON. SHT. NO. 601

**SUBDIVISION INDEX**

No.	Name
1.	DUQUOIN HEIGHTS 2/12
2.	NOKOMIS MANOR NATURES PARK 2/69
3.	GENEVA HEIGHTS 2/122
4.	SORRENTO RANCHES 26 / 50 & 50A

- LEGEND**
- PERM. REF. MON. (for Subs)
  - CONC. MON.
  - IRON PIPE
  - CO. SEC. COR. MON.

**ALTERATIONS**

DATE	REVISIONS AND ADDITIONS	DESCRIPTION
SEPT. 1960	REVISIONS AND ADDITIONS	
APR. 1961	REVISIONS AND ADDITIONS	
DEC. 1967	REVISIONS AND ADDITIONS	
APR. 1978	REVISIONS AND ADDITIONS	
APR. 1982	REVISIONS AND ADDITIONS	
APR. 1988	REVISIONS AND ADDITIONS	
SEP. 1989	REVISIONS AND ADDITIONS	
NOV. 1987	REVISIONS AND ADDITIONS	

SARASOTA COUNTY FLORIDA  
SCALE: 1" = 200' APR. 1966

S 1/2 SECTION 32  
TWP. 38 S. RNG. 19 E.

SHT. NO.  
386

