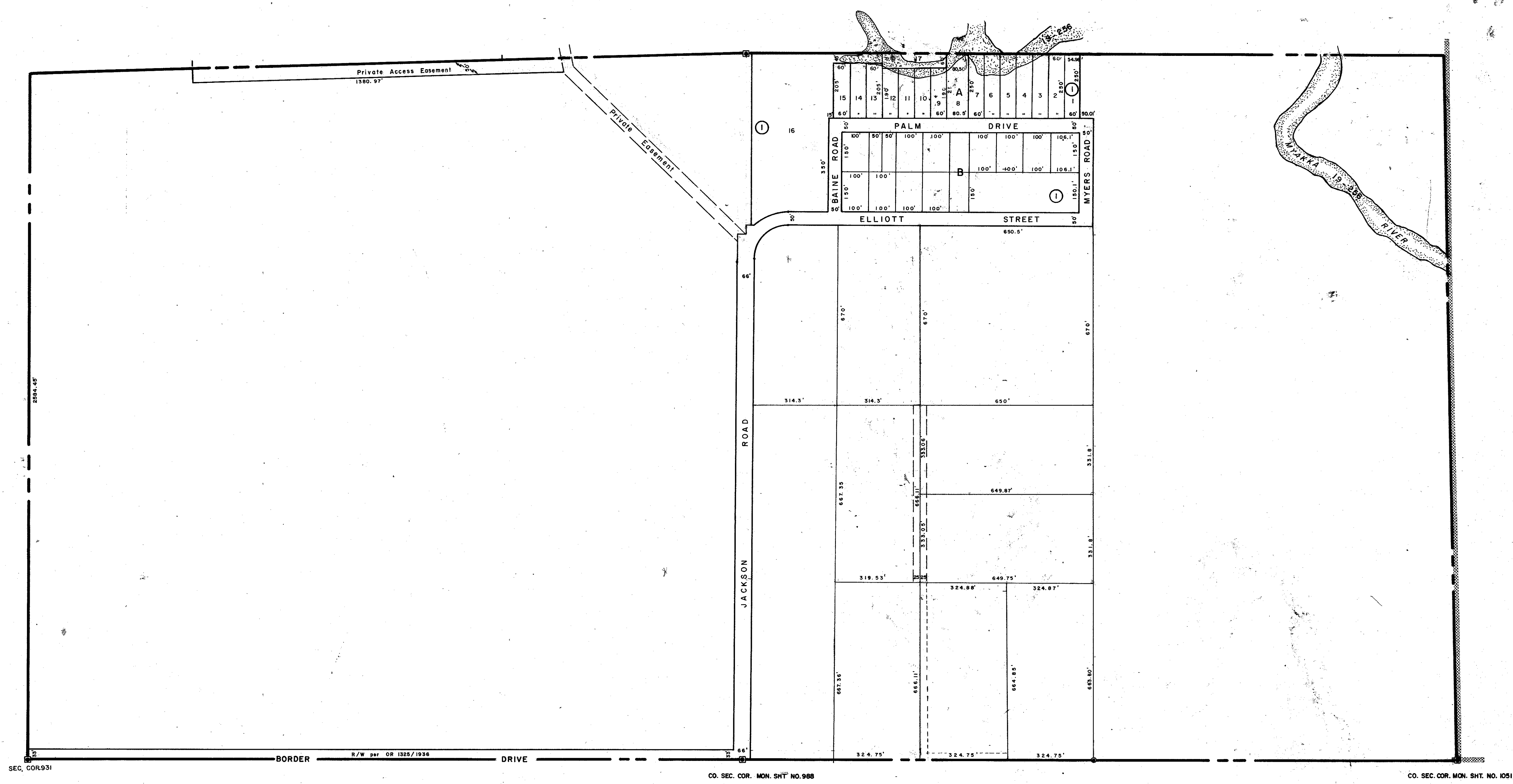


N 1/2 36-38-19, Sht. No. 393

S 1/2 35-38-19, Sht. No. 392

S 1/2 31-38-20, Sht. No. 710



SEC. COR. 931

BORDER R/W per OR 1325/1936 DRIVE

CO. SEC. COR. MON. SHT. NO. 988

CO. SEC. COR. MON. SHT. NO. 1051

SUBDIVISION INDEX

I. River Palms 7/78 A

N 1/2 1-39-19, Sht. No. 395

- LEGEND
- Section Corner Monument
 - Permanent Reference Monument
 - Reference Point for Subdivisions
 - ① Subdivision Index Number
 - ▨ County Property

REVISIONS	
DATE	DESCRIPTION
Feb., 1976	Redrawn
Mar., 1976	Revised Myakka River
OCT 1979	Added BORDER DRIVE R/W per OR 1325/1936
SEP 1982	SECTION CORNERS - D.M.'s
OCT 1984	Corrected McArthur Tract
DEC 1987	ADDED DRAINAGE NUMBERS

SARASOTA COUNTY, FLORIDA

Scale: 1" = 200' Date: Feb., 1976

Drawn By: J.M.M.

S. 1/2 Section 36
Twp. 38 S.- Rge. 19 E.

Sheet No.
394

BRUNING 44-511 16772