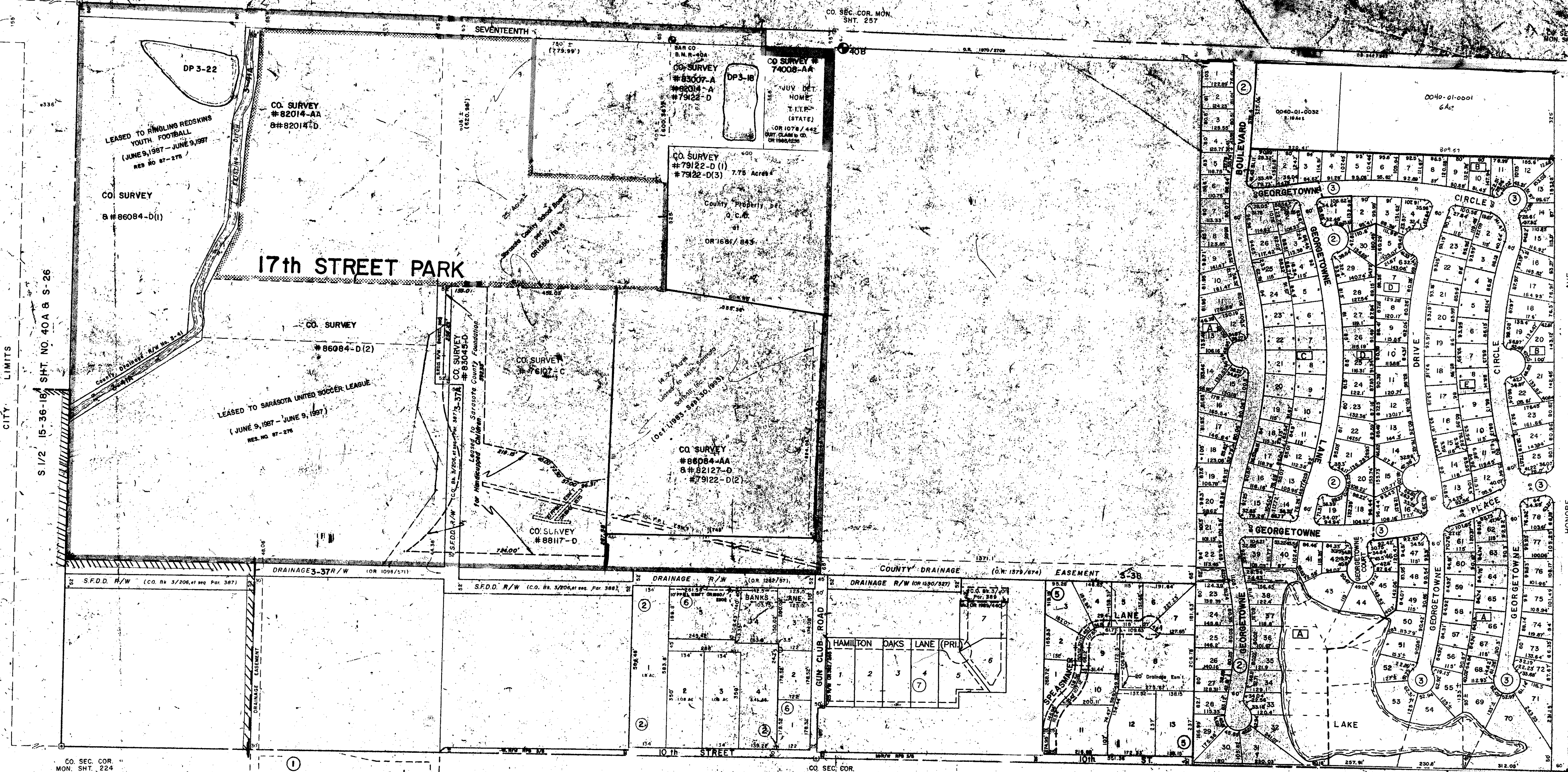


CO. SEC. COR. MON. SHT. 223

CO. SEC. COR. MON. SHT. 257

CO. SEC. COR. MON. SHT. 288



**SUBDIVISION INDEX**

NO.	NAME	
1.	FAIRWAY OAKS ESTATES	24 / 27
2.	SLAUBAUGH SUBDIVISION	25 / 31
3.	GEORGETOWNE SUBDIVISION UNIT 1	25 / 42
3.	GEORGETOWNE SUBDIVISION - Unit 2	27 / 5
5.	FREEMAN RIDGE SUBDIVISION, PB. 27/32	
6.	HELTRICK & SLAUBAUGH SUBDIVISION, PB. 28/32	
7.	SAAH SUB. PB. 36/5	

DATE	DESCRIPTION	BY
JAN 1979	Redrawn and Added GEORGETOWNE SUB. Unit 1	JWE
JUN 1978	Exchange Portion of Pat 288 S.F.D.D. R/W per OR 1290/326-328	JWE
JAN 1980	Added Leased Area for Sarasota County, Archon, Inc.	JWE
SEPT 1980	Added GEORGETOWNE SUBDIVISION, Unit 2	JWE
SEPT 1980	Exchange Portion of Pat 309 S.F.D.D. R/W per O.R. 1379/672-677	JWE
SEPT 1980	Added Leased Area for JUV. DET. HOME per O.R. 1379/241 and 432	JWE
DEC 1980	Added HELTRICK & SLAUBAUGH SUBDIVISION per O.R. 2732/32A	JWE
JUL 1981	Added GEORGETOWNE SUBDIVISION	JWE
JUN 1981	Added HELTRICK & SLAUBAUGH SUBDIVISION	JWE
MAY 1981	Added HELTRICK & SLAUBAUGH SUBDIVISION	JWE
MAY 1981	Portion of 17th St. R/W per SB 342/342	JWE

- LEGEND:**
- ☐ County Section Corner Monument
  - ⊙ County Bench Mark
  - Permanent Ref. Mon. for Subs.
  - ① Subdivision Index Number

**SARASOTA COUNTY, FLORIDA**  
 Scale: 1" = 200'  
 Date: JAN. 1979  
 Drawn By: J. W. Esber

**S 1/2 SECTION 14  
 TWP. 36 S. RGE. 18 E.**

Sheet No. **40**



BRUNING 44-511 16772