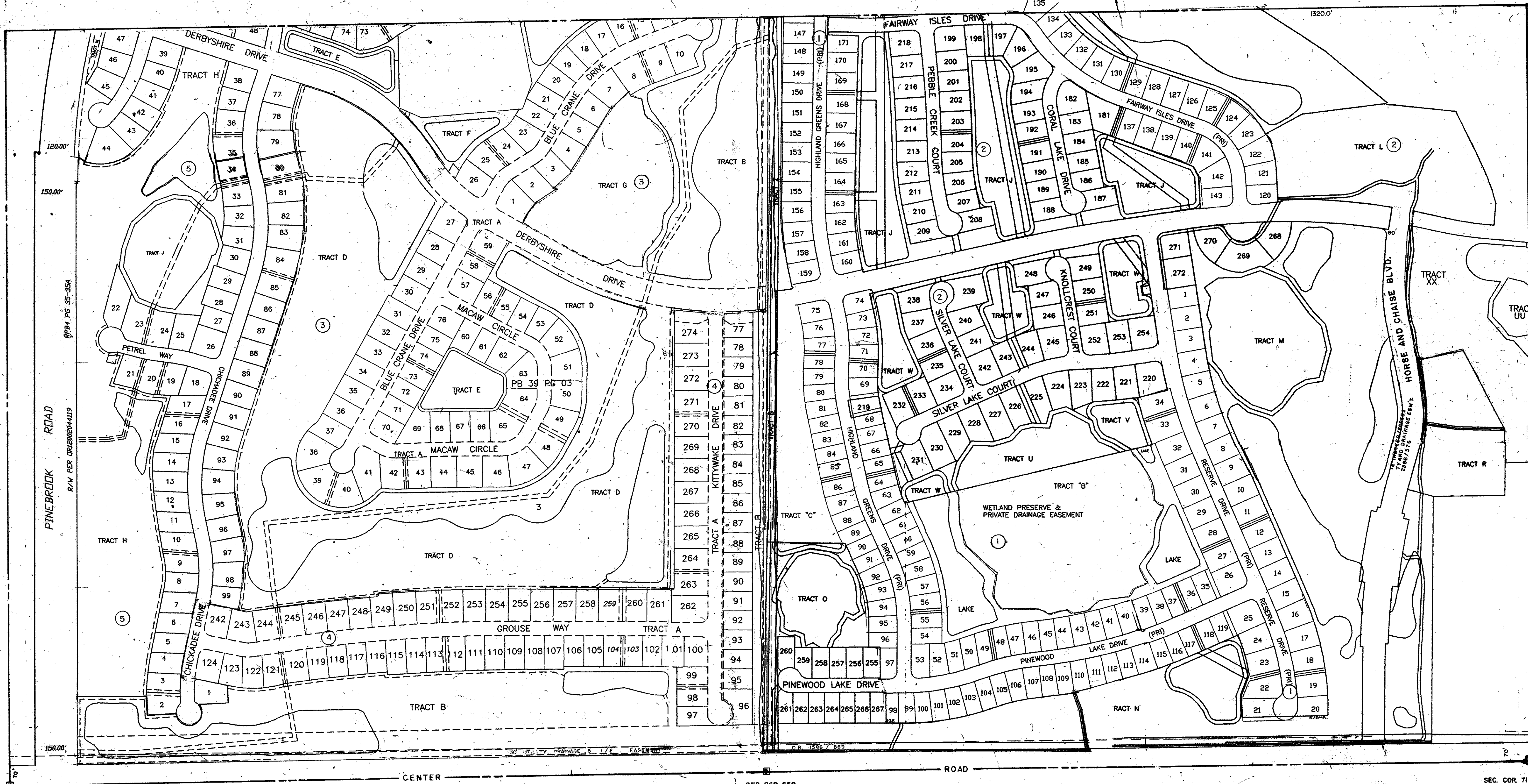


N 1/2 16-39-19 SHT. NO. 425

S 1/2 17-39-19 SHT. NO. 426

S 1/2 15-39-19 SHT. NO. 424



SEC. COR. 607

SEC. COR. 658

SEC. COR. 711

N 1/2 21-39-19 SHT. NO. 435

1 PELICAN POINT GOLF & COUNTRY CLUB UNIT 1 PB 36/39
 2 UNIT 2 PB 37/29
 3 UNIT 3 PB 39/3
 4 UNIT 4 PB 40/16
 5 UNIT 5 PB 40/41

LEGEND:

- Section Corner Monument
- Permanent Reference Monument
- Reference Point for Subdivisions
- ① Subdivision Index Number
- Drainage

ALTERATIONS	
DATE	DESCRIPTION
SEPT. 1983	REVISIONS AND ADDITIONS
MAY 1986	REVISION AND SEC. COR. ADDED
JULY 1974	CENTER REVISION - O.B. 1041, P. 1888 - J.L.D.
OCT. 1977	SECTION CORNERS DNR
OCT. 1982	ADDED DRAINAGE DITCH NUMBERS
MAR 1994	ADDED DRAINAGE ESM'S & PERMITS 2588/581

SARASOTA COUNTY FLORIDA
 SCALE: 1" = 200'
 MAY 1966

S 1/2 SECTION 16
 TWP. 39 S. RNG. 19 E.

SHT. NO.
 426

