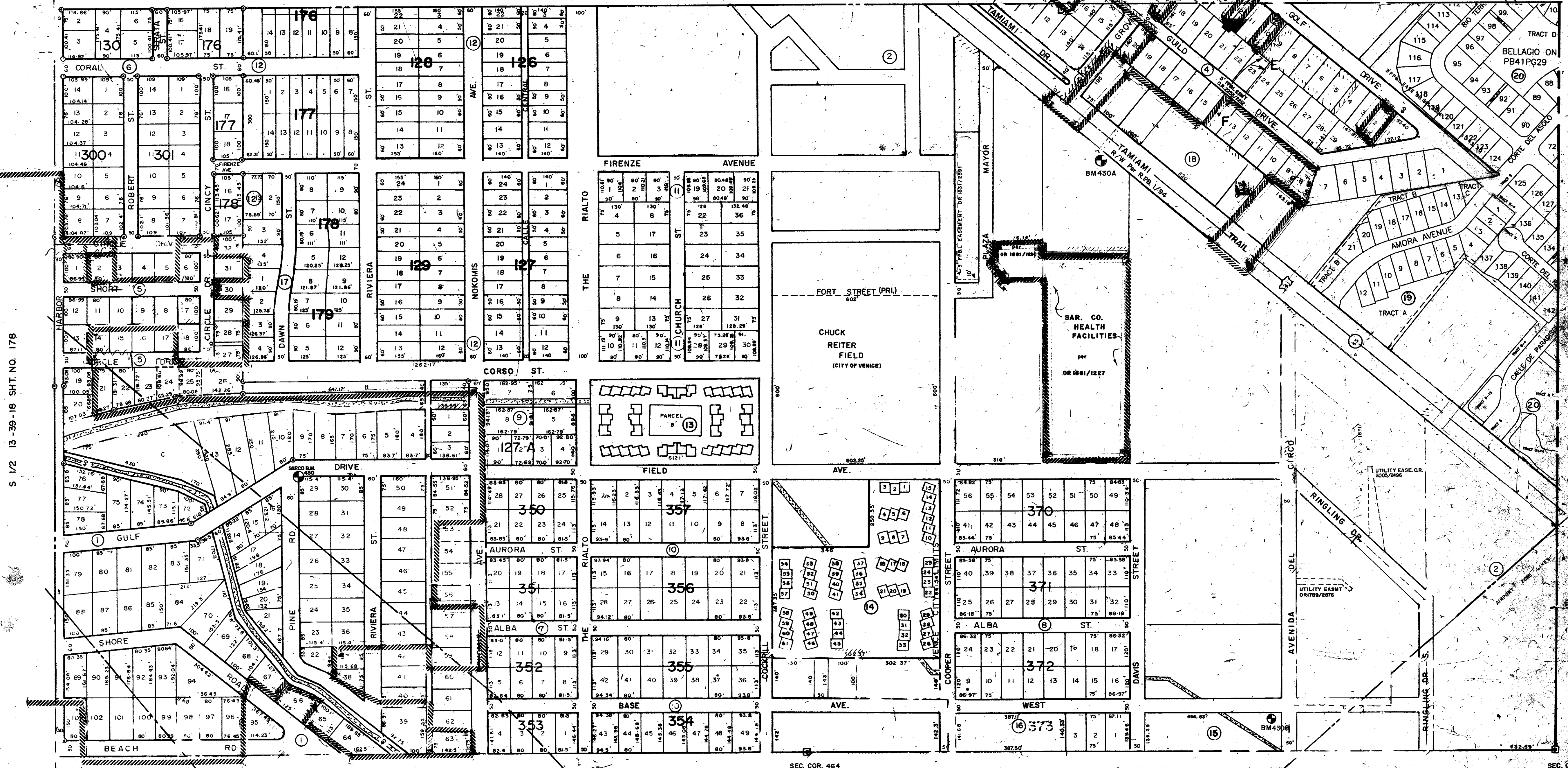


SEC. COR. 419



S 1/2 13-39-18 SHT. NO. 178

SEC. COR. 420

SEC. COR. 510

SUBDIVISION INDEX

| No. | Name                                | No. | Name   |
|-----|-------------------------------------|-----|--|
| 1.  | GULF SHORES NO. 1 6/66              | 14. | BEACH MANOR VILLAS SOUTH CB 4/4, 4A-40                                     |
| 2.  | VENICE AIR FIELD                    | 15. | THE SENTINEL CONDO., C.B. 6/36.  |
| 3.  | COUNTRY CLUB ESTATES NO. 2 5/29 A   | 16. | GULF BREEZE CONDO, C.B. 5/33   |
| 4.  | " " NO. 3 6/74                      | 17. | REPLAT OF BLOCKS 178 & 179 SOUTH VENEZIA PARK SECTION OF VENICE P.B. 10/76 |
| 5.  | GULF SHORES NO. 4 7/53              | 18. | VENICE MEDICAL CENTER CONDO, C.B. 26/46B                                   |
| 6.  | GOLDEN BEACH UNIT NO. 3 9/45        | 19. | AMORA SUBDIVISION PB 42 PG 33  |
| 7.  | BEACH MANOR UNIT NO. 1 9/89         | 20. | BELLAGIO ON VENICE ISLAND PB41PG29   |
| 8.  | " " NO. 2 9/90                      |     |  |
| 9.  | BLOCK 127A RESUB. 17/11             |     |  |
| 10. | BEACH MANOR UNIT NO. 3 11/5         |     |  |
| 11. | BEACH VILLAGE 12/2                  |     |  |
| 12. | VENICE SOUTH VENEZIA SEC. 2/214     |     |  |
| 13. | BEACH MANOR VILLAS CONDOMINIUM 2/42 |     |  |

LEGEND

- PERM. REF. MON (for Subs)
- CONG. MON.
- IRON PIPE
- CO. SEC. COR. MON.
- CO. BENCH MARK

| DATE      | DESCRIPTION   |
|-----------|---|
| AUG. 1924 | ADDED GULF SHORES NO. 4   |
| AUG. 1926 | GOLDEN BEACH NO. 3  |
| JAN. 1928 | EXTEND VENICE CITY LIMITS   |
| AUG. 1928 | VENICE CITY LIMITS  |
| JAN. 1933 | GEORGE W. AIRPORT ZONE LINES, BLK. 1+27, BEACH MANOR NO. 3 ADDED. |
| JULY 65   | VENICE CITY LIMITS REV.   |
| JULY 1966 | COUNTRY CLUB ESTATES CORRECTED                                    |
| JULY 1967 | BEACH VILLAGE & VENICE SOUTH VENEZIA PARK SEC. ADDED              |
| DEC. 1967 | SPLITS & REVISIONS  |
| DEC. 1972 | REVISED VENICE CITY LIMITS  |
| NOV. 1973 | ADDED BEACH MANOR VILLAS SOUTH.                                   |
| DEC. 1965 | EXTEND VENICE CITY LIMITS   |

| DATE      | DESCRIPTION  |
|-----------|--|
| JAN. 1984 | ANNEXED RINGLING DR. PROPERTY                                |
| SEP. 1983 | ANNEXED LOT 1, BLK. E, COUNTRY CLUB ESTATES NO. 3            |
| JAN. 1983 | ANNEXED LOT 1, BLK. F, COUNTRY CLUB ESTATES                  |
| MAY 1983  | ANNEXED LOT 1, BLK. G, COUNTRY CLUB ESTATES                  |
| AUG. 1983 | SARASOTA COUNTY HEALTH FACILITIES AUTHORITY, OR 1881/1274-30 |
| MAY 1983  | ANNEXED LOT 50, Gulf Shores, No. 4                           |
| MAY 1983  | ANNEXED LOT 51, Gulf Shores, No. 4                           |
| MAY 1983  | ANNEXED LOT 52, Gulf Shores, No. 4                           |
| MAY 1983  | ANNEXED LOT 53, Gulf Shores, No. 4                           |
| MAY 1983  | ANNEXED LOT 54, Gulf Shores, No. 4                           |
| MAY 1983  | ANNEXED LOT 55, Gulf Shores, No. 4                           |
| MAY 1983  | ANNEXED LOT 56, Gulf Shores, No. 4                           |
| MAY 1983  | ANNEXED LOT 57, Gulf Shores, No. 4                           |
| MAY 1983  | ANNEXED LOT 58, Gulf Shores, No. 4                           |
| MAY 1983  | ANNEXED LOT 59, Gulf Shores, No. 4                           |
| MAY 1983  | ANNEXED LOT 60, Gulf Shores, No. 4                           |
| MAY 1983  | ANNEXED LOT 61, Gulf Shores, No. 4                           |
| MAY 1983  | ANNEXED LOT 62, Gulf Shores, No. 4                           |
| MAY 1983  | ANNEXED LOT 63, Gulf Shores, No. 4                           |
| MAY 1983  | ANNEXED LOT 64, Gulf Shores, No. 4                           |
| MAY 1983  | ANNEXED LOT 65, Gulf Shores, No. 4                           |
| MAY 1983  | ANNEXED LOT 66, Gulf Shores, No. 4                           |
| MAY 1983  | ANNEXED LOT 67, Gulf Shores, No. 4                           |
| MAY 1983  | ANNEXED LOT 68, Gulf Shores, No. 4                           |
| MAY 1983  | ANNEXED LOT 69, Gulf Shores, No. 4                           |
| MAY 1983  | ANNEXED LOT 70, Gulf Shores, No. 4                           |
| MAY 1983  | ANNEXED LOT 71, Gulf Shores, No. 4                           |
| MAY 1983  | ANNEXED LOT 72, Gulf Shores, No. 4                           |
| MAY 1983  | ANNEXED LOT 73, Gulf Shores, No. 4                           |
| MAY 1983  | ANNEXED LOT 74, Gulf Shores, No. 4                           |
| MAY 1983  | ANNEXED LOT 75, Gulf Shores, No. 4                           |
| MAY 1983  | ANNEXED LOT 76, Gulf Shores, No. 4                           |
| MAY 1983  | ANNEXED LOT 77, Gulf Shores, No. 4                           |
| MAY 1983  | ANNEXED LOT 78, Gulf Shores, No. 4                           |
| MAY 1983  | ANNEXED LOT 79, Gulf Shores, No. 4                           |
| MAY 1983  | ANNEXED LOT 80, Gulf Shores, No. 4                           |
| MAY 1983  | ANNEXED LOT 81, Gulf Shores, No. 4                           |
| MAY 1983  | ANNEXED LOT 82, Gulf Shores, No. 4                           |
| MAY 1983  | ANNEXED LOT 83, Gulf Shores, No. 4                           |
| MAY 1983  | ANNEXED LOT 84, Gulf Shores, No. 4                           |
| MAY 1983  | ANNEXED LOT 85, Gulf Shores, No. 4                           |
| MAY 1983  | ANNEXED LOT 86, Gulf Shores, No. 4                           |
| MAY 1983  | ANNEXED LOT 87, Gulf Shores, No. 4                           |
| MAY 1983  | ANNEXED LOT 88, Gulf Shores, No. 4                           |
| MAY 1983  | ANNEXED LOT 89, Gulf Shores, No. 4                           |
| MAY 1983  | ANNEXED LOT 90, Gulf Shores, No. 4                           |
| MAY 1983  | ANNEXED LOT 91, Gulf Shores, No. 4                           |
| MAY 1983  | ANNEXED LOT 92, Gulf Shores, No. 4                           |
| MAY 1983  | ANNEXED LOT 93, Gulf Shores, No. 4                           |
| MAY 1983  | ANNEXED LOT 94, Gulf Shores, No. 4                           |
| MAY 1983  | ANNEXED LOT 95, Gulf Shores, No. 4                           |
| MAY 1983  | ANNEXED LOT 96, Gulf Shores, No. 4                           |
| MAY 1983  | ANNEXED LOT 97, Gulf Shores, No. 4                           |
| MAY 1983  | ANNEXED LOT 98, Gulf Shores, No. 4                           |
| MAY 1983  | ANNEXED LOT 99, Gulf Shores, No. 4                           |
| MAY 1983  | ANNEXED LOT 100, Gulf Shores, No. 4                          |

SARASOTA COUNTY FLORIDA  
SCALE 1" = 200' JAN 1965

UNINCORPORATED  
City of Venice

S. 1/2 SECTION 18.  
TWP. 39. S. 19. E.



SHT. NO.  
430