

NW Sec. 22-36-18

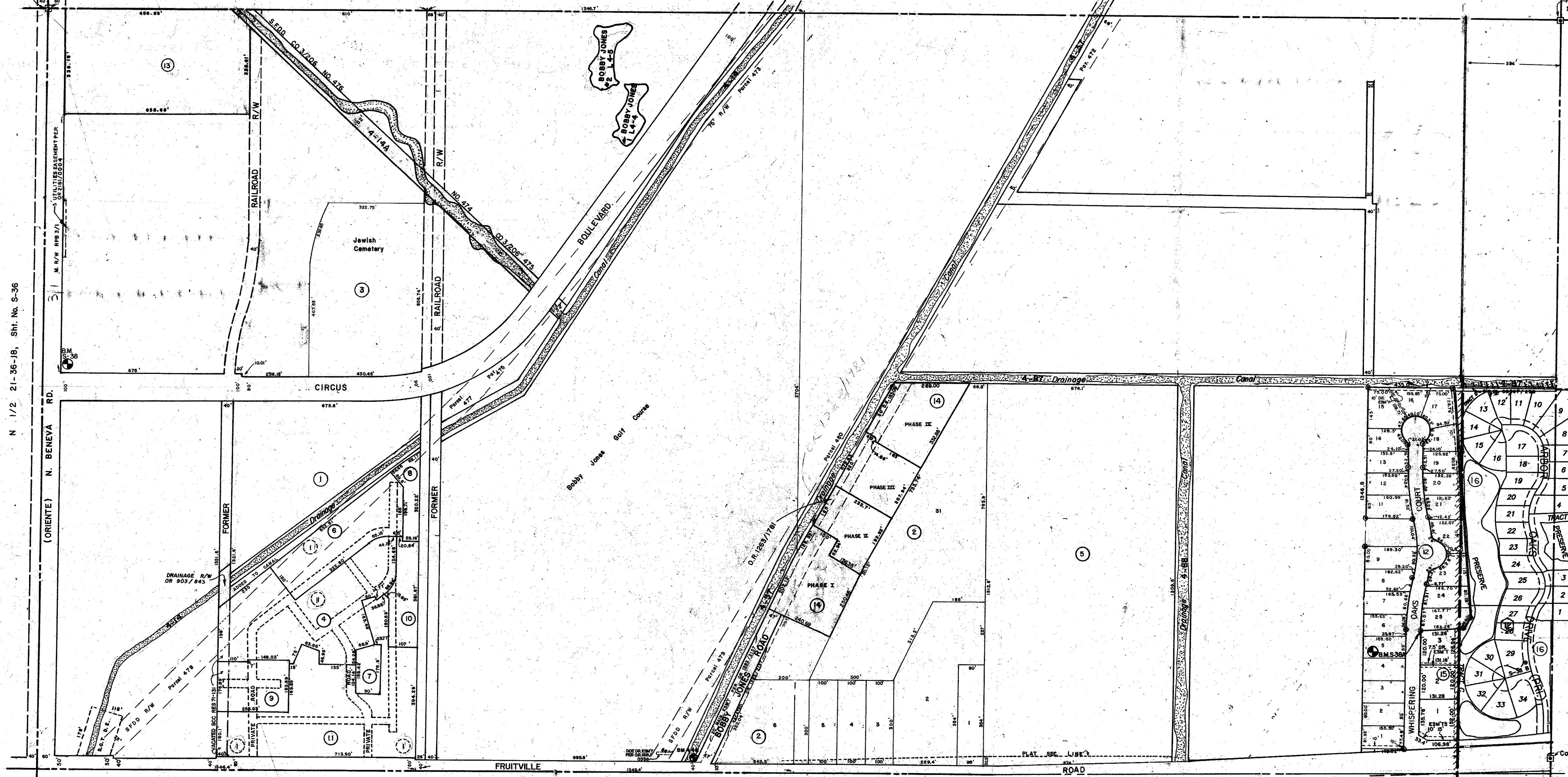
S 1/2 15-36-18, Sht. No. S-26

NE Sec. Cor. Mon. Sec. 22-36-18 NO. 224

N 1/2 21-36-18, Sht. No. S-36

N 1/2 23-36-18, Sht. No. 44

Co-Sec. Cor. Mon. Sht. No. 7



SUBDIVISION INDEX

- 1. Country Club Add. Replat, 3/55, 2/104
- 2. Golf Terrace Gardens, 4/95
- 3. Jewish Community Center, 3/97
- 4. Par "72" Condo., C.B. 5/7, 7A, 7B
- 5. Oakdale (Vacated) 1/25 (VACATED DB, 245/81, 5/8)
- 6. Par "72", Phase 2, C.B. 5/17
- 7. " " " 3, C.B. 5/36
- 8. " " " 4, C.B. 5/23
- 9. " " " 5, C.B. 5/24
- 10. " " " 6, C.B. 5/37
- 11. " " " 7, C.B. 5/38
- 12. Whispering Oaks, 2/39
- 13. THE GLEN, C.B. 15/14, 15/17, 16/42
- 14. BROOKSIDE, C.B. 15/36, 15/37, 15/38, 15/39, 15/40, 15/41, 15/42, 15/43, 15/44, 15/45, 15/46, 15/47, 15/48, 15/49, 15/50, 15/51, 15/52, 15/53, 15/54, 15/55, 15/56, 15/57, 15/58, 15/59, 15/60, 15/61, 15/62, 15/63, 15/64, 15/65, 15/66, 15/67, 15/68, 15/69, 15/70, 15/71, 15/72, 15/73, 15/74, 15/75, 15/76, 15/77, 15/78, 15/79, 15/80, 15/81, 15/82, 15/83, 15/84, 15/85, 15/86, 15/87, 15/88, 15/89, 15/90, 15/91, 15/92, 15/93, 15/94, 15/95, 15/96, 15/97, 15/98, 15/99, 15/100
- 15. WHISPERING OAKS, PHASE II, R.B. 35/14-14A
- 16. ARBOR OAKS PB38PG06

S 1/2 22-36-18, Sht. No. S-39

- LEGEND:**
- NON CONFORMING SUB
 - ⊕ Section Corner Monument (NEW NOS)
 - ⊙ Bench Mark
 - Permanent Reference Monument
 - ① Subdivision Index Number

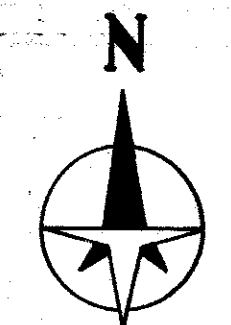
DATE	DESCRIPTION	D.G.N.
NOV 1956	ADDED WHISPERING OAKS PHASE I, P.B. 35/14-14A	KLP
MAY 1961	ADDED PARCEL A, S.C. PER OR 193/584	JFJ
MAY 1960	ADDED B.M. 5-38	KLP
MAR 1950	ADDED 5 UTILITIES EASEMENT OR 2181/0004	JFJ
MAY 1957	ADDED CANAL, NUMBERS	KLP
JAN 1955	ADDED DRAINAGE EASEMENT PER O.R. 1821/0358	WJW
SEP 1954	ADDED R/W D.B. 85/150, N. BENEVA ROAD	KLP
SEP 1954	BROOKSIDE CONDO. PHASE II	KLP
SEP 1954	S.F.D.D. OR 306/728 FOR OR 307/238	JAN
FEB 1954	REMOVED SURVEY	JAN
JAN 1954	BROOKSIDE Condo., Phase II Amended	JAN
JUN 1955	D.O.C. Drainage Easement per R.R. 1/112	JAN
JUN 1955	UPDATE	JAN
MAY 1955	THE GLEN Amended Plat	OP
NOV 1952	BROOKSIDE CONDO. PHASE I	JAN
OCT 1951	Amended Plat of THE GLEN	JAN
JUL 1950	SPD R/W per C.O. 98.3/208 at 2nd, Parcels 472-482	JAN
OCT 1950	AMENDED PLAT THE GLEN CONDOMINIUM	LRT

SARASOTA COUNTY, FLORIDA

Scale: 1" = 200' Date: May, 1973
Drawn By: D.E.B. & J.L.D.

SEE MAP NO. 44A
CITY OF SARASOTA
N 1/2 Sec. 22, Twp. 36, Rge. 18

Sheet No. **S 38**



BRUNING 44-511 16772