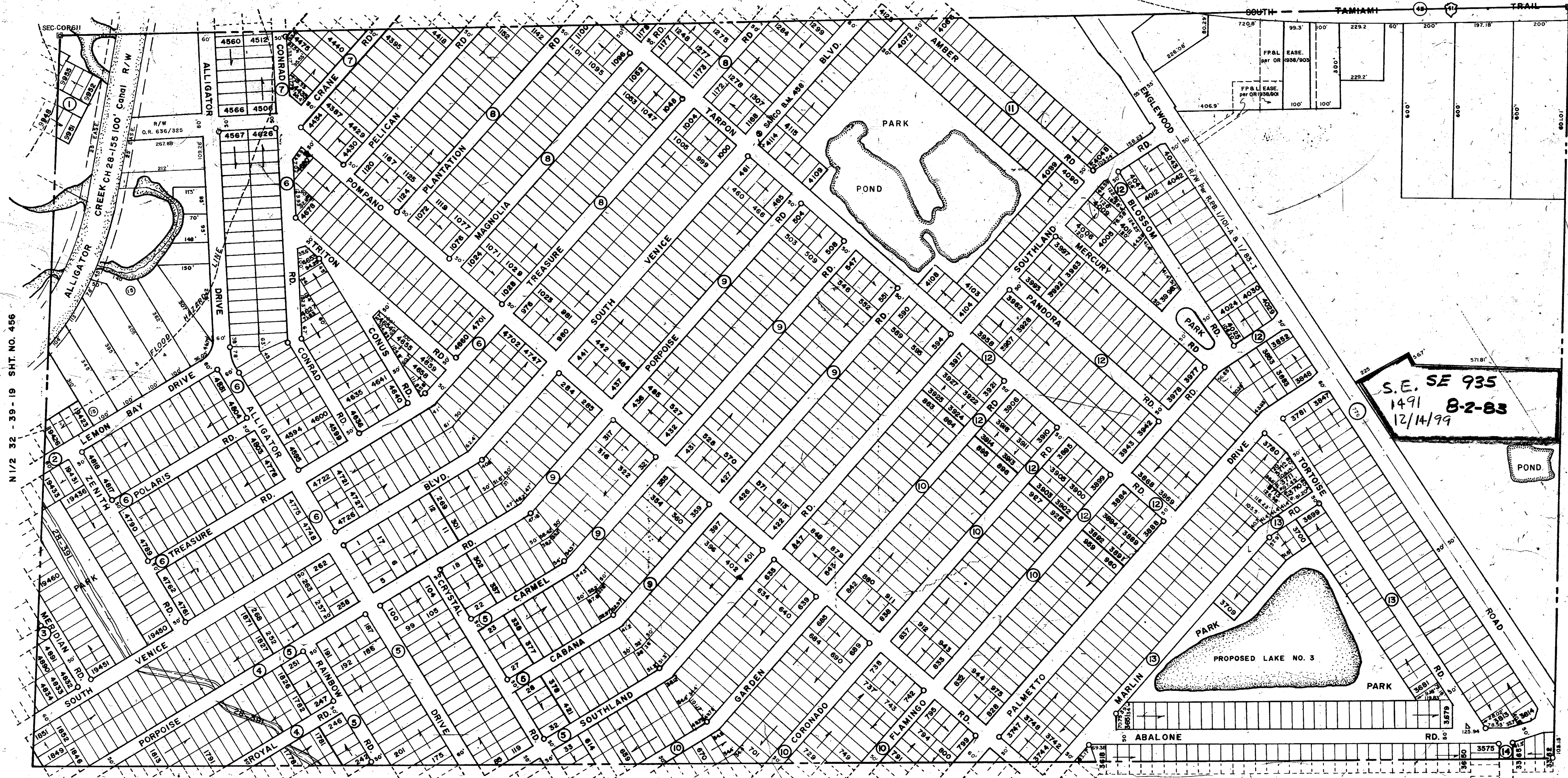


S1/2 28-39-19 SHT NO 450

SEC. COR. 715



S1/2 33-39-19 SHT NO 459

SUBDIVISION INDEX

No.	Name	No.	Date
1.	SOUTH VENICE	37	6/93
2.	"	74	7/72
3.	"	19	6/62
4.	"	6	6/34
5.	"	18	6/28
6.	"	18	6/55
7.	"	17	6/54
8.	"	4	6/32
9.	"	2	6/30
10.	"	3	6/31
11.	"	15	6/51
12.	"	14	6/50
13.	"	13	6/49
14.	"	12	6/48
15.	CATHY'S COVE	12	26/21

NOTE: ALL LOTS IN SOUTH VENICE SUB. ARE 40'x100' EXCEPT AS NOTED AND ALL LOTS ARE NO. CONSECUTIVELY.

LEGEND

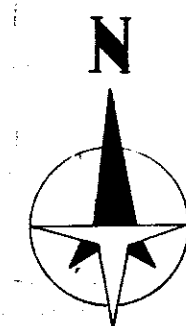
- Section Corner Monument
- Permanent Reference Monument
- Reference Point for Subdivisions
- ① Subdivision Index Number
- Drainage
- - - Flood Hazard Line - Feb. 1975

DATE	DESCRIPTION	BY
JULY 1969	CHANGED S.R. 775 TO S.R. 776 PER E.D.T. LETTER	RAK
JULY 1969	ADDED DRAINAGE DITCH NUMBERS	RAK
MAY 1963	REVISED	RAK
SEPT. 1963	REDRAWN (MECH)	RAK
JAN 1964	REDRAWN	RAK
DEC. 1955	REVISED BENCHMARK 458 OF CORNER OF S. VENICE BLVD & TARPON RD.	RAK
JAN. 1954	Updated Ponds per 1978 Act.	RAK
JUNE 1962	REV ALLIGATOR CREEK	JAM
SEPT. 1962	REVISED	JAM
MAY 1963	REVISED	JAM
JAN 1964	REDRAWN (MECH)	JAM
OCT. 1967	SPLITS & REVISIONS	JAM
JULY 1972	Split & Revisions, OR 1034, PG. 1329	JAM
OCT. 1975	Flood Hazard Line	D.G.N.
JULY 1975	Added R/W for Pompano Road Extension (O.R. 636/325)	JAM
AUG 1975	Added R/W for Pompano Road Extension (O.R. 636/325)	JAM
APR. 1975	Corrected Lot Numbers in S. Venice No. 37	JAM

SARASOTA COUNTY FLORIDA
SCALE: 1"= 200'
JAN. 1966.

**N 1/2 SECTION 33
TWP. 39 S. RNG 19 E.**

458



N 1/2 32-39-19 SHT. NO. 456

N 1/2 34-39-19 SHT. NO. 460