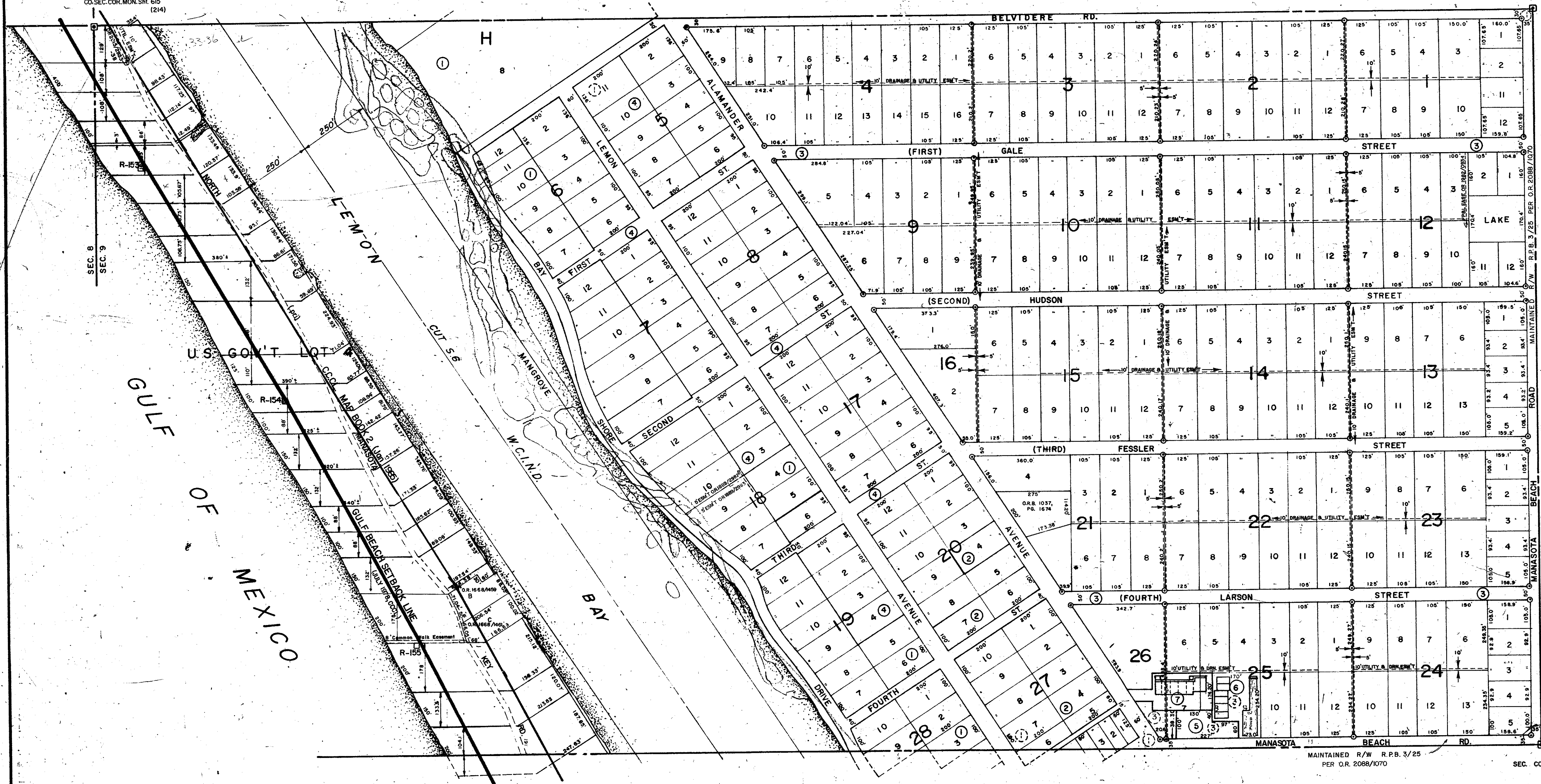


S 1/2 5-40-19
SHT. NO. 474

S 1/2 4-40-19 SHT. NO. 473

CO. SEC. COR. MON. SH. 719
(397)



N 1/2 10-40-19 SHT. NO. 477

S 1/2 9-40-19 SHT. NO. 476

SUBDIVISION INDEX

No.	Name
1.	PLAT OF THE MANASOTA-LAND & TIMBER CO. A/27 (2/29 M.C. RECORDS)
2.	AMENDED PLAT OF A PORTION OF PLAT OF MANASOTA-LAND & TIMBER CO. 7/72
3.	MANASOTA GARDENS 7/48
4.	1st ADD. TO MANASOTA GARDENS 7/92
5.	MANASOTA BEACH GARDENS, Bldg. 1, A CONDO. C.B. 9/35
6.	MANASOTA BEACH GARDENS, BLDG. 2, A CONDO. C.B. 10/26
7.	MANASOTA BEACH GARDENS, BLDG. 3, A CONDO. C.B. 11/43

LEGEND:

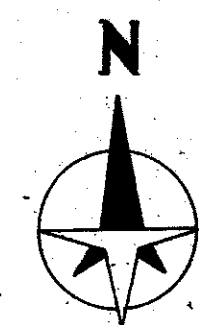
- ▣ Section Corner Monument
- Permanent Reference Monument
- Reference Point for Subdivisions
- Subdivision Index Number
- Drainage
- ⊙ Bench Mark

DATE	DESCRIPTION
AUG 1981	ADDED DRN & UTILITY AS PER ORIGINAL P.B. 7/48
JAN 1981	ADDED SIMPLE DEED OR 2266/431
FEB 1982	ADDED C.C.L. MAP BOOK 2, JAN 1985
JAN 1983	ADDED MAINTAINED R/W MANASOTA BEACH RD. R.P.B. 3/25
MAY 1988	ADDED UTILITY EASEMENT AND WOOD WATER DISTRICT OR 2015/2333-36
MAY 1988	ADDED EASEMENT OR 1582/0534
JAN 1987	ADDED EASEMENT OR 1889/2982
JAN 1987	ADDED EASEMENT OR 1889/2982
JAN 1987	ADDED EASEMENT OR 1889/2982
JAN 1987	ADDED EASEMENT OR 1889/2982
JAN 1987	ADDED EASEMENT OR 1889/2982
JAN 1987	ADDED EASEMENT OR 1889/2982
JAN 1987	ADDED EASEMENT OR 1889/2982
JAN 1987	ADDED EASEMENT OR 1889/2982

SARASOTA COUNTY FLORIDA
SCALE: 1" = 200'
JULY 1986

SECTION 8
N 1/2 SECTION 9
TWP. 40 S. RGE. 19 E.

SHT. NO.
475



SEC. COR. 720

FEE SIMPLE DEED PER OR 2266/431

MAINTAINED R/W R.P.B. 3/25 PER O.R. 2088/1070