

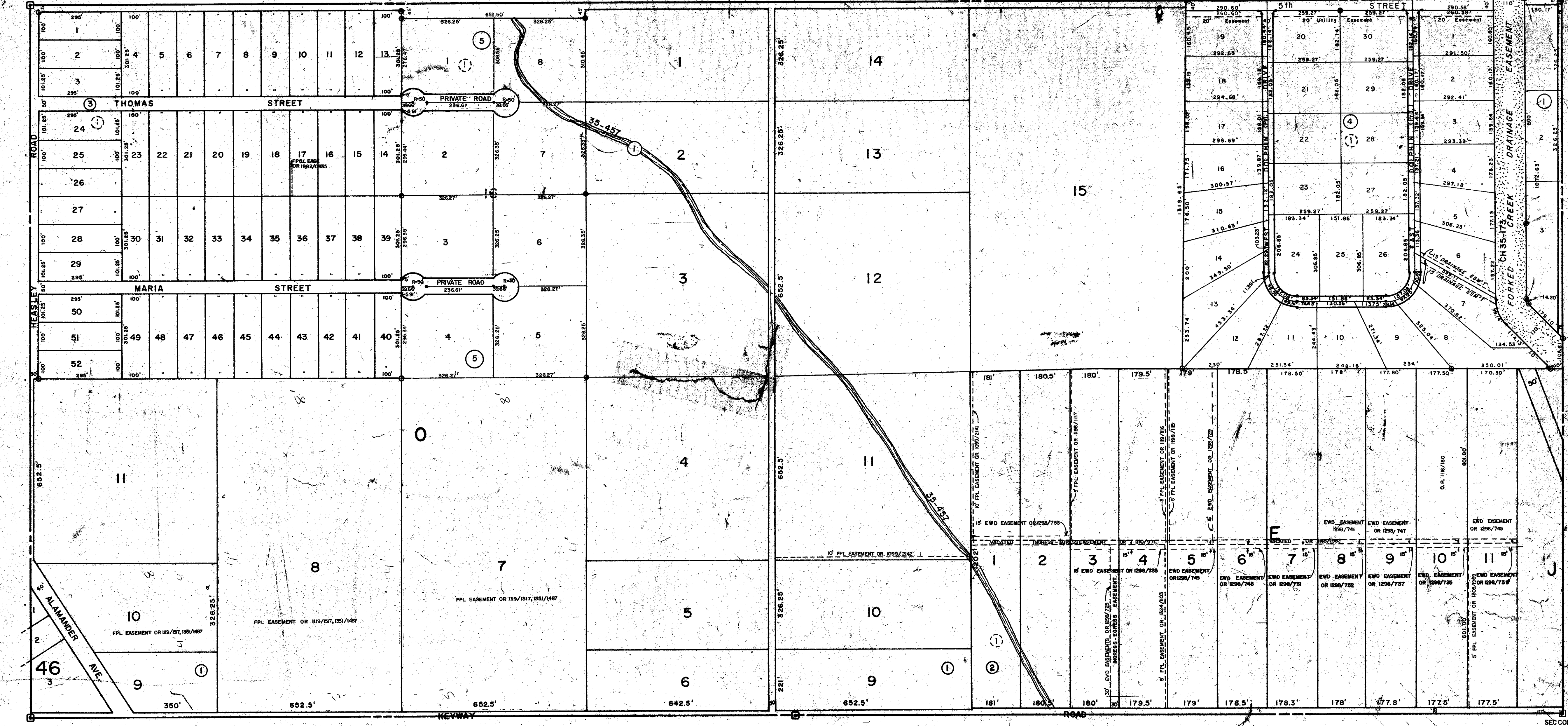
N 1/2 15-40-19 SHT. NO. 477

SEC. COR. 720

SEC. COR. 829

S 1/2 9-40-19 SHT. NO. 476

S 1/2 11-40-19 SHT. NO. 480



SEC. COR. 721

SEC. COR. 775

SEC. COR. 830

N 1/2 15-40-19 SHT. NO. 487

SUBDIVISION INDEX

No.	Name
1	MANASOTA LAND & TIMBER CO. A/27
2	GULF COAST GROVES 1/6
3	THOMAS E. HEASLEY SUB 5/90
4	BLUE DOLPHIN ESTATES, 23/29, 29A.
5	BEACH FARMS SUBDIVISION, 24/12, 12A.

LEGEND

- Section Corner Monument
- ⊙ Permanent Reference Monument
- ⊕ Reference Point for Subdivisions
- ① Subdivision Index Number
- Drainage

DATE	REVISIONS AND ADDITIONS	DESCRIPTION
SEPT. 1965	REVISIONS AND ADDITIONS	
JULY 1966	REVISIONS AND ADDITIONS	
JAN. 1976	ADDED BLUE DOLPHIN ESTATES	
MAR. 1977	SH11-G.R. 118/180, BLK. E-30 & 30' INGRESS-EGRESS ESMY	
APR. 1977	SECTION CORNERS - DNR'S	
OCT. 1988	ADDED DRAINAGE DITCH PER OR'S	
FEB. 1990	ADDED DRAINAGE DITCH PER OR'S	
MAR. 1991	ADDED DRAINAGE DITCH PER OR'S	
SEP. 1991	CHANGE NORTHERLY SEC. LINE & R/W LINE TO 15'	

SARASOTA COUNTY FLORIDA
SCALE: 1" = 200'
JULY 1966

S 1/2 SECTION 10
TWP. 40 S. RGE. 19 E.

SHT. NO.
478

