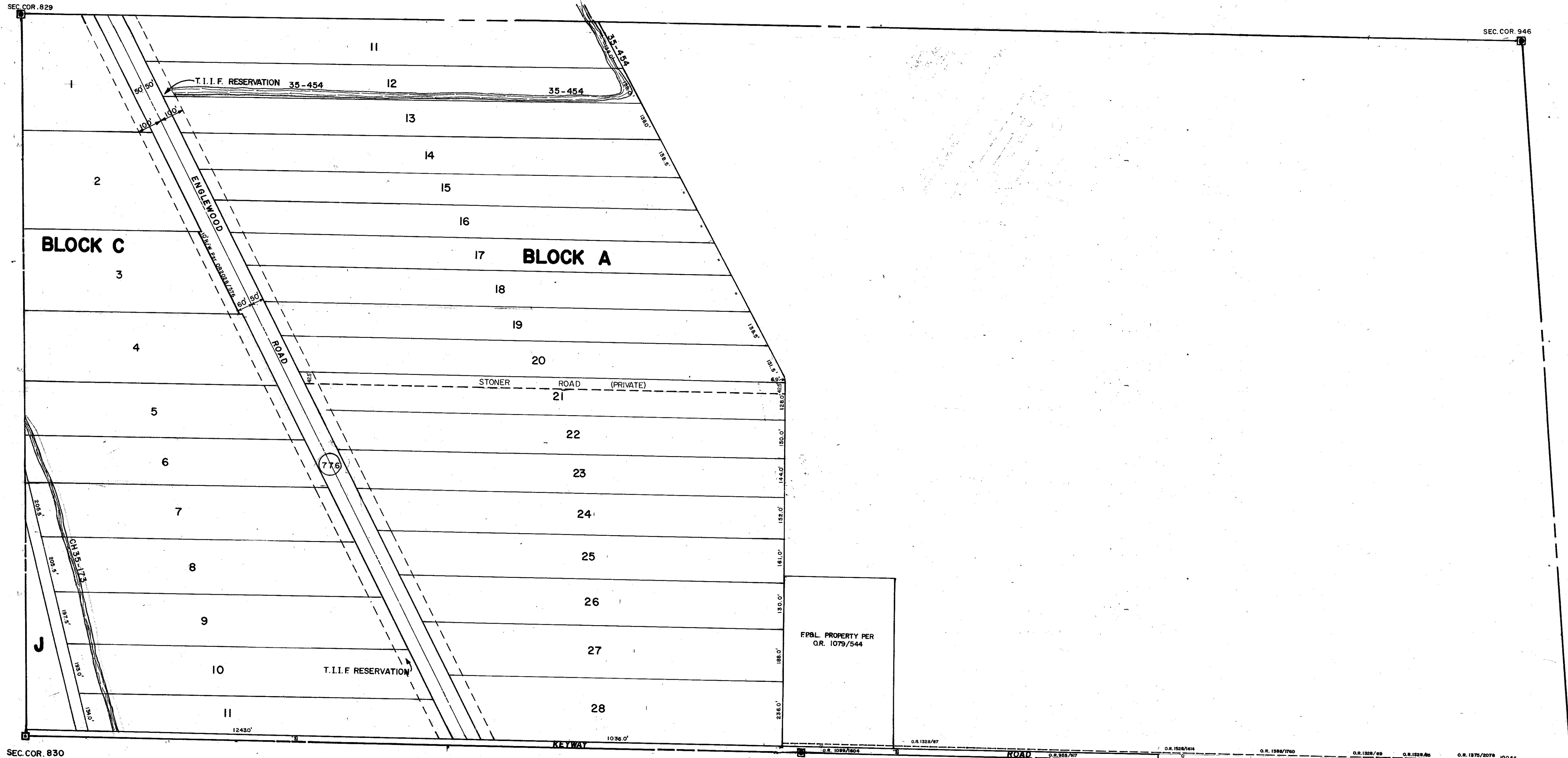


N. 1/2 11-40S-19E. SHT. NO. 479



S. 1/2 10-40S-19E. SHT. NO. 478

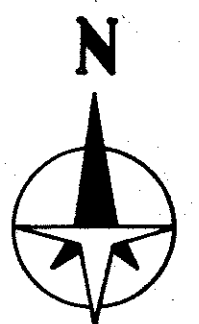
S. 1/2 12-40S-19E. SHT. NO. 482

SEC. COR. 829
 SEC. COR. 946
 SEC. COR. 830
 SEC. COR. 889
 SEC. COR. 947

SUBDIVISION INDEX
 NO. 1 NAME: GULF COAST GROVES PB. - PG. 1/6

N. 1/2 4-40S-19E. SHT. NO. 485

NOTE: ALL 30' EASEMENTS SHOWN ARE IN FAVOR OF ENGLEWOOD WATER DISTRICT, FOR PUBLIC R/W & UTILITY PURPOSES, WITH NO MAINTENANCE OBLIGATION.



- LEGEND:**
- ☐ County Section Corner Monument
 - ⊕ County Bench Mark
 - Permanent Ref. Mon. for Subs.
 - ① Subdivision Index Number

DATE	DESCRIPTION	BY
FEB 1988	ADDED DRAINAGE DITCH 35-454	SJA
MAY 1988	30' R/W QUIT-CLAIM DEED BY OR 2028/576 TO SAR. CO.	SCR
JULY 1989	CHANGED S.R. 775 TO S.R. 776 PER F.D.O.T. LETTER	RAK
SEPT 1989	ADDED STONER ROAD	KLC
AUG 1990	R/W PER O.R. 2218/1775 TO SARL CO.	KAM
AUG 1991	T.I.I.F. RESERVATION CORRECTED FROM T.I.F.P.	DSW

SARASOTA COUNTY, FLORIDA
 Scale: 1" = 200' Date: FEB. 1987
 Drawn By: CHAR

**S. 1/2 SECTION 11,
 TWP. 40S, RNG. 19E.**

Sheet No.
480