

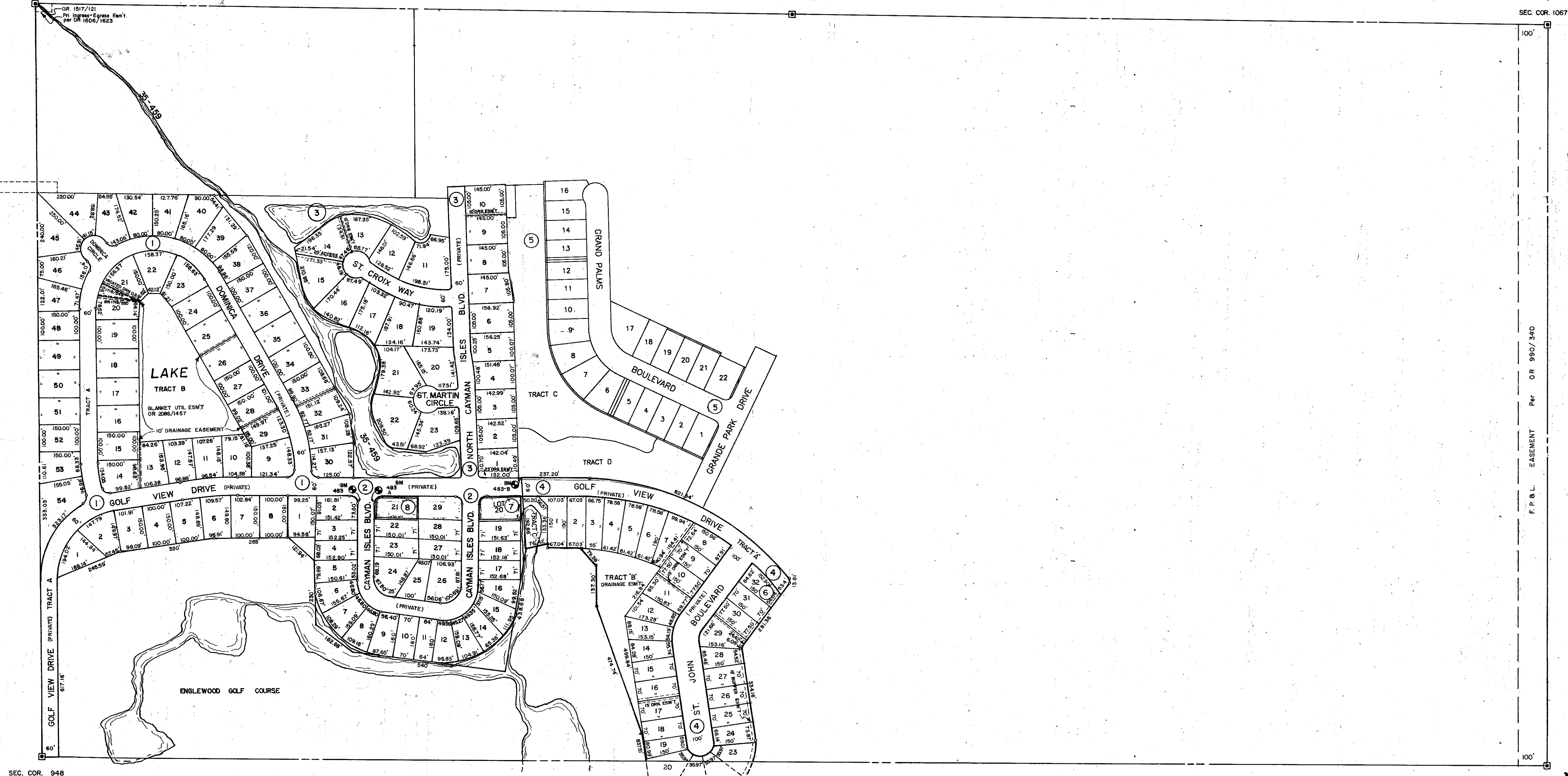
SEC. COR. 947

SEC. COR. 1004

SEC. COR. 1067

N 1/2 14-40-19 SHT. NO. 485

N 1/2 18-40-20 SHT. NO. 827



SEC. COR. 948

SEC. COR. 1069

SUBDIVISION INDEX

NO.	NAME
1	ENGLEWOOD GOLF COURSE UNIT 2 PB 25, Pg 22, 22 A
2	ENGLEWOOD GOLF COURSE UNIT 3 PB 30, Pg 12, 12A
3	" " UNIT 4 PB 33, Pg 20-20C
4	ENGLEWOOD GOLF COURSE UNIT 5 PB 34, Pg 3-3C
5	BOCA ROYLALE UNIT 6 PB 40/30
6	ENGLEWOOD GOLF COURSE UNIT 5-A PB43PG06
7	ENGLEWOOD GOLF COURSE UNIT 3-A PB42PG8
8	ENGLEWOOD GOLF COURSE UNIT 3-B PB 42 PG 09

LEGEND:

- ☐ County Section Corner Monument
- ⊕ County Bench Mark
- Permanent Ref. Mon. for Subs.
- ① Subdivision Index Number

DATE	DESCRIPTION	BY
MAR 1990	ADDED ENGLEWOOD GOLF COURSE UNIT 5 PB 34/3	KLP
JULY 1989	BENCH MARKS 483 & 483A	KLP
NOV 1989	ENGLEWOOD GOLF COURSE UNIT 4 PB 33/20-20C	KLP
MAR 1989	BLANKET UTIL. EASEMENT LTV 8 1/2" E&C UNIT 2 OR 2086/4457	KLP
FEB 1989	ADDED DRAINAGE DISTRICT 5	KLP
DEC 1988	BENCH MARKS 483 & 483A	P.J.B.

SARASOTA COUNTY, FLORIDA

Scale: 1" = 200' Date: JULY 1989  
 Drawn By: KLP

N 1/2 SECTION 13  
 TWP. 40S. RGE. 19 E.

Sheet No.

483

