

S 1/2 10-40-19 SHT NO 478

SEC. COR. 775

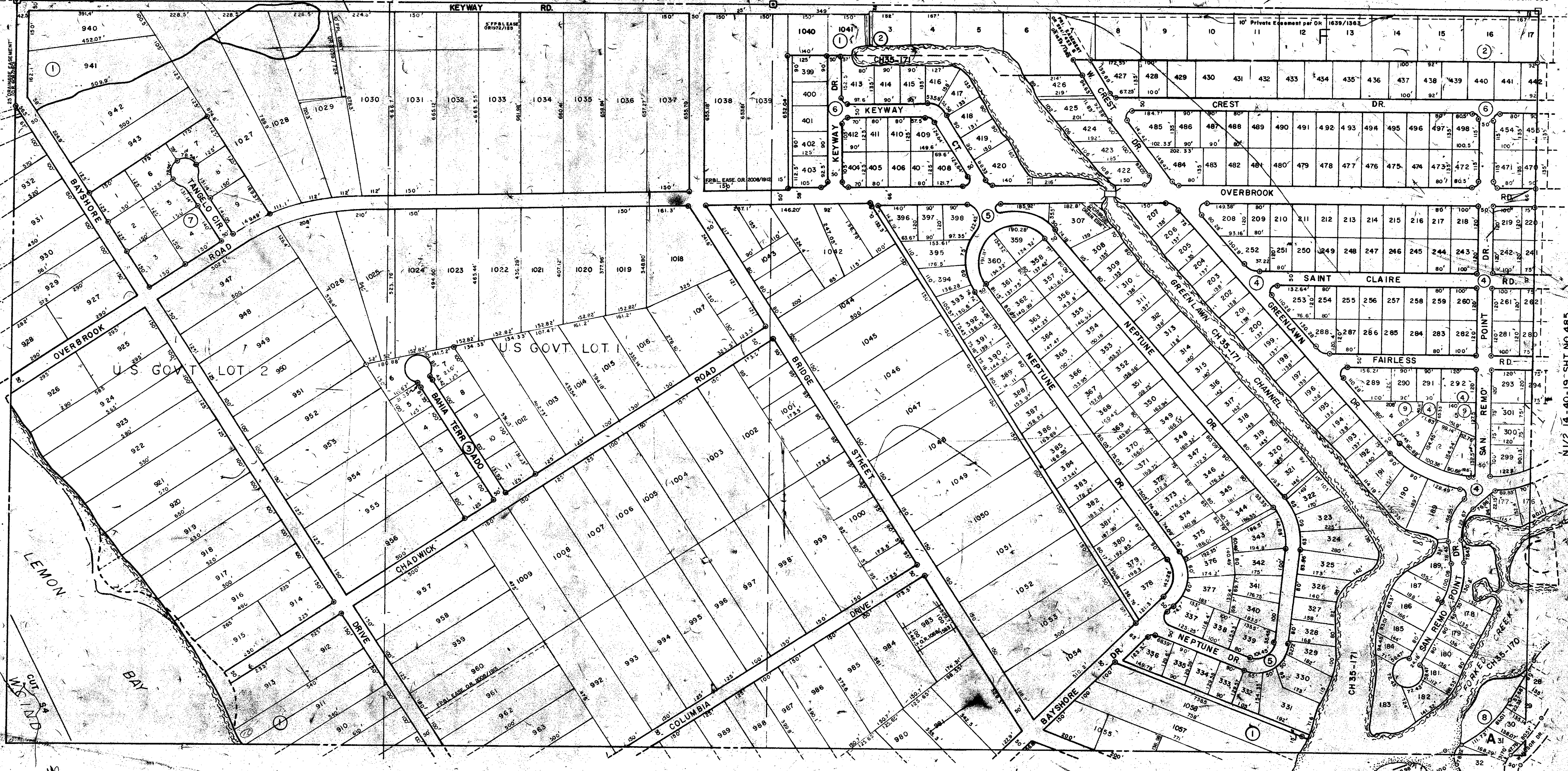
SEC. COR. 830

SEC. COR. 721

N 1/2 16-40-19 SHT NO 489

N 1/2 14-40-19 SHT NO 485

S 1/2 15-40-19 SHT NO 488



SUBDIVISION INDEX

No.	Name		
1	ENGLEWOOD GARDENS NO.5	4/72 B 73	7. TANGALO PARK 20/2
2	GULF COAST GROVES 1/6		8. ENGLEWOOD ISLES UNIT NO. 2 21/288
3	BAHIA TERRAZZO 9/57		9. SMITH TERRACES 27/50
4	OVERBROOK GARDENS SEC. 2	9/52-B 9 53B	
5		10/2 'A	
6		11/42 42 A	

- LEGEND
- CONC. MON (for Subs)
 - CONC. MON
 - IRON PIPE
 - CO SEC. COR. MON

DATE	DESCRIPTIONS
FEB 1988	OFF. EASEMENT OR 2039/724
MAY 1988	OFF. EASEMENT OR 2008/1918
SEP 1987	OFF. EASEMENT OR 1972/125
DEC 1985	Assignment of easement - W. Crest Dr. extended, per OR 1839/1363
DEC 1985	Private Easement per OR 1825
OCT 1982	SECTION CORNERS - DNR 4
MAY 1981	SMITH ACRES 27/50
MAY 1981	SMITH ACRES 27/50
SEP 1979	SPLIT LOT 1042 - D.N. 1668/1381

SARASOTA COUNTY FLORIDA
SCALE 1" = 200'

DEC 1964
N 1/2 SECTION 15
TWP. 40 S. RNG. 19 E.



SHT. NO.
487