

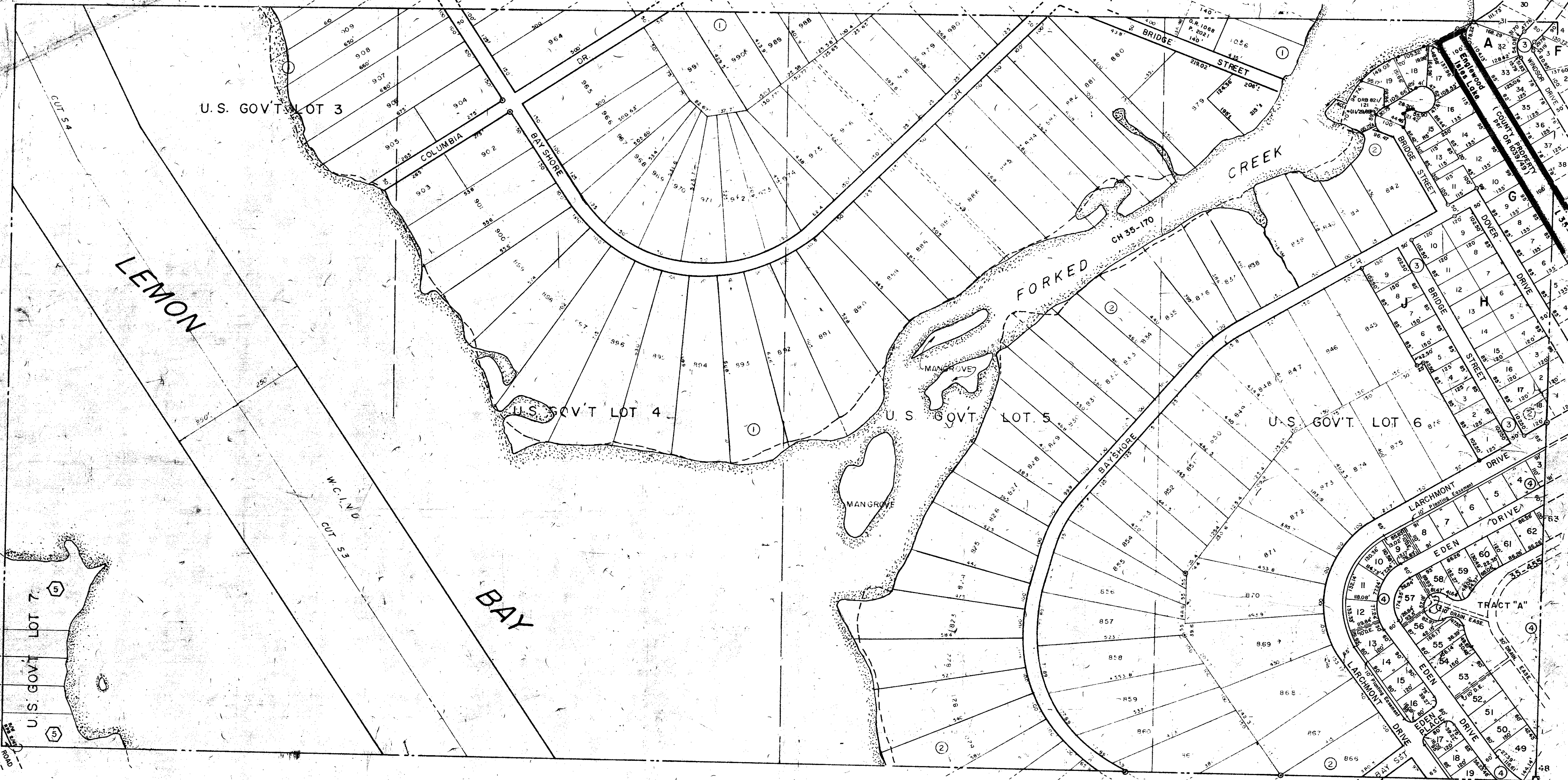
N 1/2 15 - 40-19 SHT NO. 487.

S 1/2 16 - 40-19 SHT. NO. 489

S 1/2 14 - 40-19 SHT. NO. 486

N 1/2 22 - 40-19 SHT NO. 490

U.S. SEC. COR. MON. SHT. NO. 832



SUBDIVISION INDEX

No.	Name	
1.	ENGLEWOOD GARDENS NO. 5	4/73
2.	ENGLEWOOD GARDENS NO. 4	4/261
3.	ENGLEWOOD ISLES, UNIT NO. 2 (Replat of Englewood Gardens No. 4, Lots 843, 844, 847 & 878)	21/28B
4.	ENGLEWOOD ISLES, UNIT 5	25/26, A-C

- LEGEND**
- PERM. REF. MON. (for Subs)
 - CONC. MON.
 - IRON PIPE
 - CO. SEC. COR. MON. NEW NO.

DATE	ALTERATIONS DESCRIPTIONS
JUNE 65	W. LIND ADDED
OCT. 65	REDRAWN
JAN. 1968	REVISED SHORE LINE
AUG. 1972	ENGLEWOOD ISLES UNIT NO. 2
JULY 1975	LAKE BETWEEN BLKS. A & C - ENGLEWOOD ISLES
Sept. 1975	Split lot 1055
Oct. 1975	ADD. ORB 821/121
SEP. 1978	ADD. ENGLEWOOD ISLES UNIT 5, P. 25/26, A-C
AUG. 1982	COUNTY LAKE part OR 1059/49
FEB. 1988	ADDED DRAINAGE NUMBERS

SARASOTA COUNTY FLORIDA
SCALE 1" = 200' OCT. 1965

S 1/2 SECTION 15
TWP. 40 S. RNG. 19 E

SHT. NO.
488