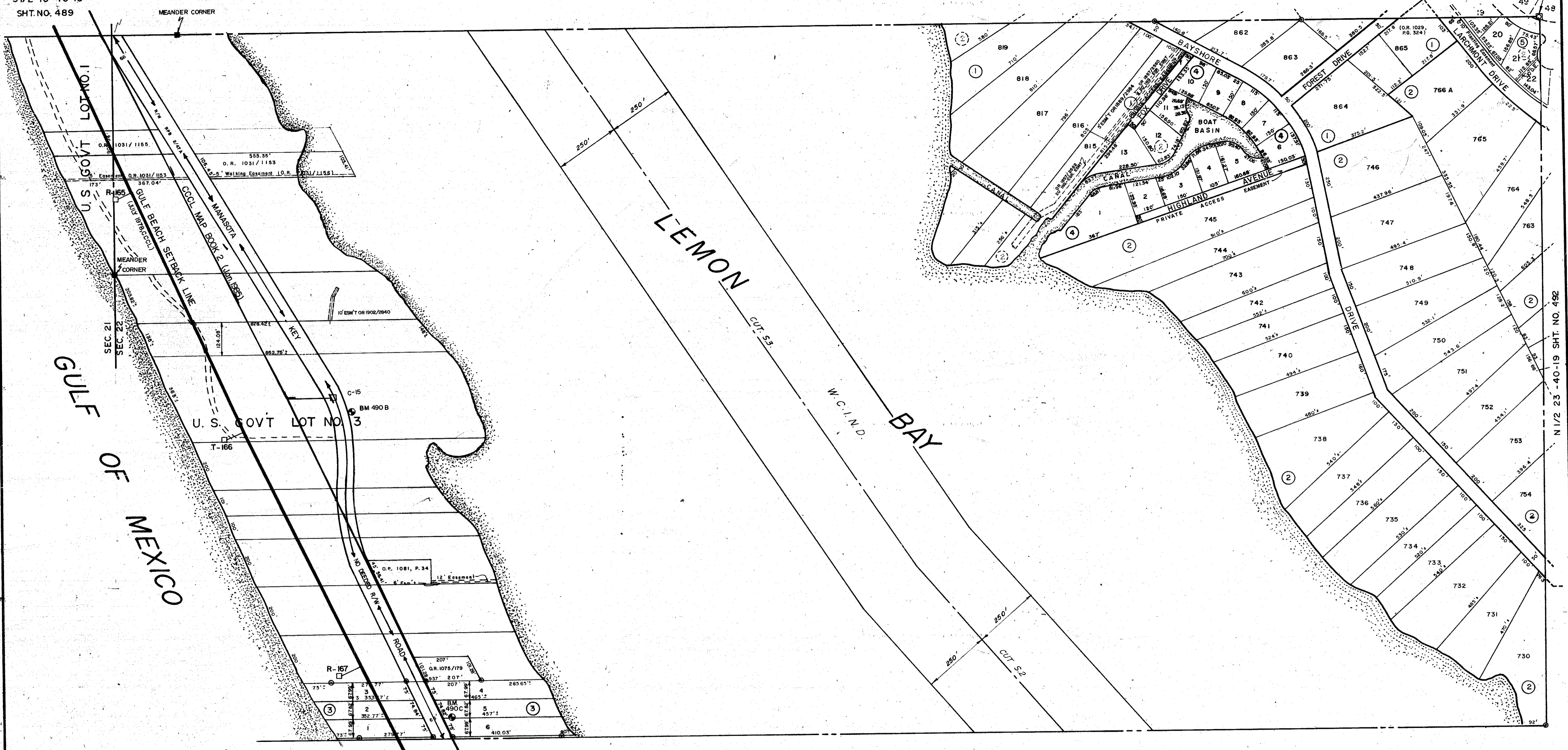


S1/2 16-40-19
SHT. NO. 489

N 1/2 15-40-19 SHT. NO. 488

CO SEC. COR. MON. SHT. 832



S1/2 22-40-19 SHT. NO. 491

SUBDIVISION INDEX

No	Name	
1.	ENGLEWOOD GARDENS NO. 4	4/61
2.	ENGLEWOOD GARDENS NO. 3	4/47
3.	JOEL SUB.	19/6
4.	LEMON BAY SUNSET SUB.	19/21
5.	ENGLEWOOD ISLES, UNIT 5	25/26, A-C

LEGEND:

- Section Corner Monument New No.
- Permanent Reference Monument
- Reference Point for Subdivisions
- ① Subdivision Index Number.
- ▬ Drainage

DATE	ALTERATIONS	DESCRIPTION
FEB 1957	ADDED CCCL MAP BOOK 2, JAN 1955	
JAN 1957	OFFICE EASEMENT OR 1902/2840	
JAN 1957	REVISED SHORE-LINE	
JUL 1956	ADDED 20' WIDE INGRESS-EGRESS EASEMENT, OR 1857/2586	
JUN 1956	ADDED 20' WIDE INGRESS-EGRESS EASEMENT, OR 1857/2586	
JAN 1956	ADDED BENCH MARKS 490B & 490C	
JAN 1954	CCCL	
FEB 1953	ADDED ROAD NAME	
SEP 1978	ADDED ENGLEWOOD ISLES, UNIT 5 P.B. 25/26, A-C	

BAR
S&L
W&W
W&W
H&J
S&S

SARASOTA COUNTY FLORIDA.
SCALE 1" = 200'
DEC. 1964.

SECTION 21.
N 1/2 SECTION 22
TWP. 40 S. RNG. 19 E.

SHT. NO.
490

