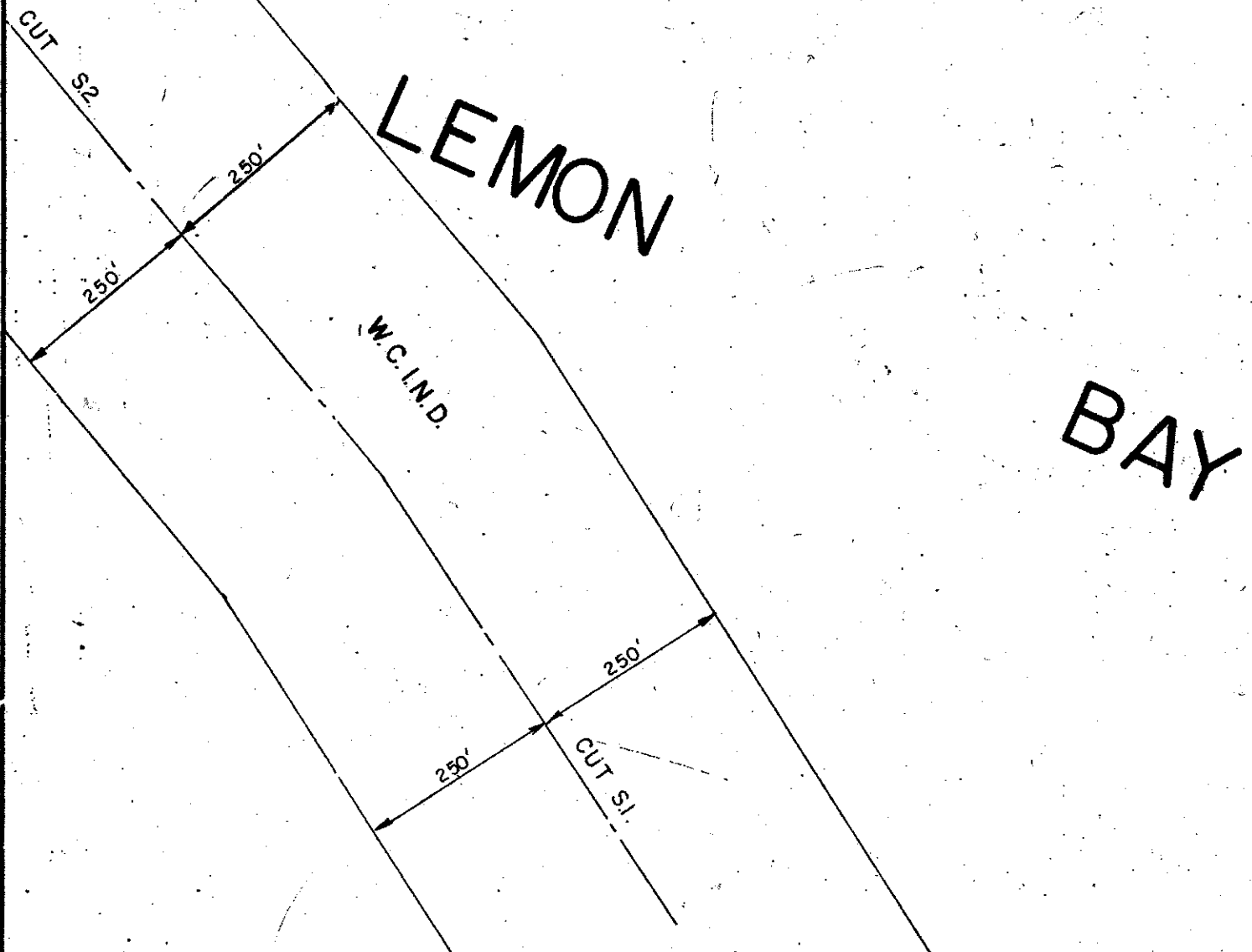
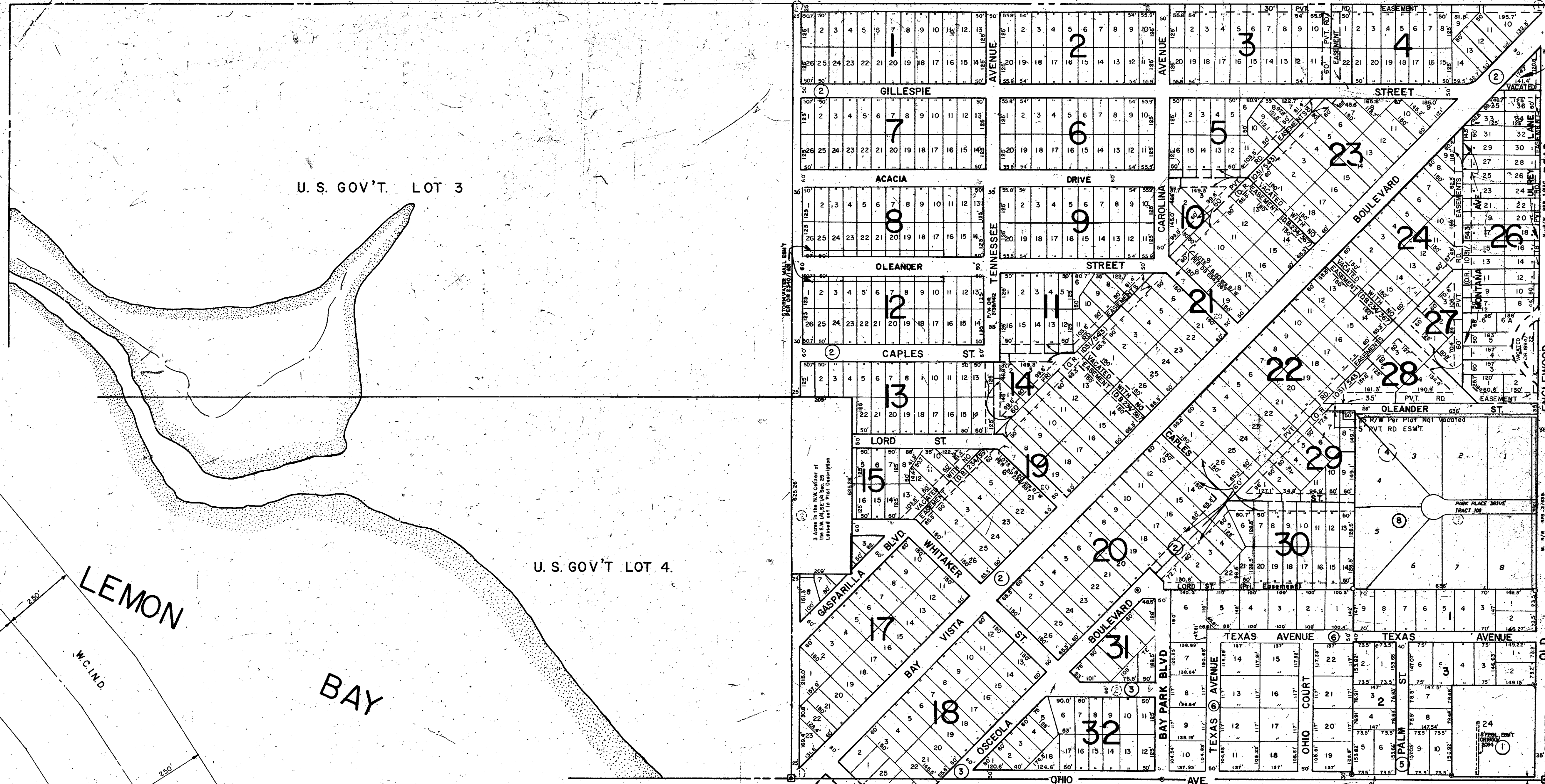


S 1/2 22-40-19 SHT. NO. 491

S 1/2 24-40-19 SHT. NO. 495



U.S. GOV'T. LOT 3

U.S. GOV'T LOT 4.

SUBDIVISION INDEX

- 1 PLAT OF ENGLEWOOD A/29
- 2 THE BAY VISTA BOULEVARD SEC. OF ENGLEWOOD 1/217, 218
- 3 1st ADDITION TO BAY VISTA BLVD. SEC. OF ENGLEWOOD 2/35
- 4 REPLAT OF 2nd. ADD. TO BAY VISTA BLVD. SEC. OF ENGLEWOOD 3/10
- 5 GULF COAST PARK 5/33
- 6 ANDERSON ACRES 28/31-31A
- 7 2nd ADDITION TO BAY VISTA BLVD. SEC. OF ENGLEWOOD 2/36
- 8 PARK PLACE ESTATES PB 41 PG 37

LEGEND:

- ☐ County Section Corner Monument
- ⊕ County Bench Mark
- ⊙ Permanent Ref. Mon. for Subs.
- ① Subdivision Index Number

DATE	REVISIONS	DESCRIPTION
OCT. 1977	Redrawn to show vacated roads by O.B. 234/567 B. Rds. that are Private	Comments by O.B. 1031/143
January, 1981	Made ST. NAME CHANGES per ST. SIGNS in field. (See RB. 1/217 and 252 SEB)	L.R.T.
SEP. 1981	Revised Sub. Index & corrected Lot number	JNT
MAR. 1982	ADDED ANDERSON ACRES	MAT
OCT. 1982	SECTION CORNERS B.M.'s	M.W.C.
MAY 1983	W.C.I.N.D. PER O.B. 1060/206	BAG
NOV. 1987	DIMENSIONS ADDED	
NOV. 1987	W.C.I.N.D. OF 554.0 FT. x 234.267	
FEB. 1991	W.C.I.N.D. OF 554.0 FT. x 234.267	
APRIL 1993	W.C.I.N.D. OF 554.0 FT. x 234.267	

SARASOTA COUNTY, FLORIDA

Scale 1" = 200' Date: October 1977

Drawn By: L. R. THOMAS

S 1/2 SECTION 23 TWP. 40 S. RNG. 19 E.

Sheet No.

493

