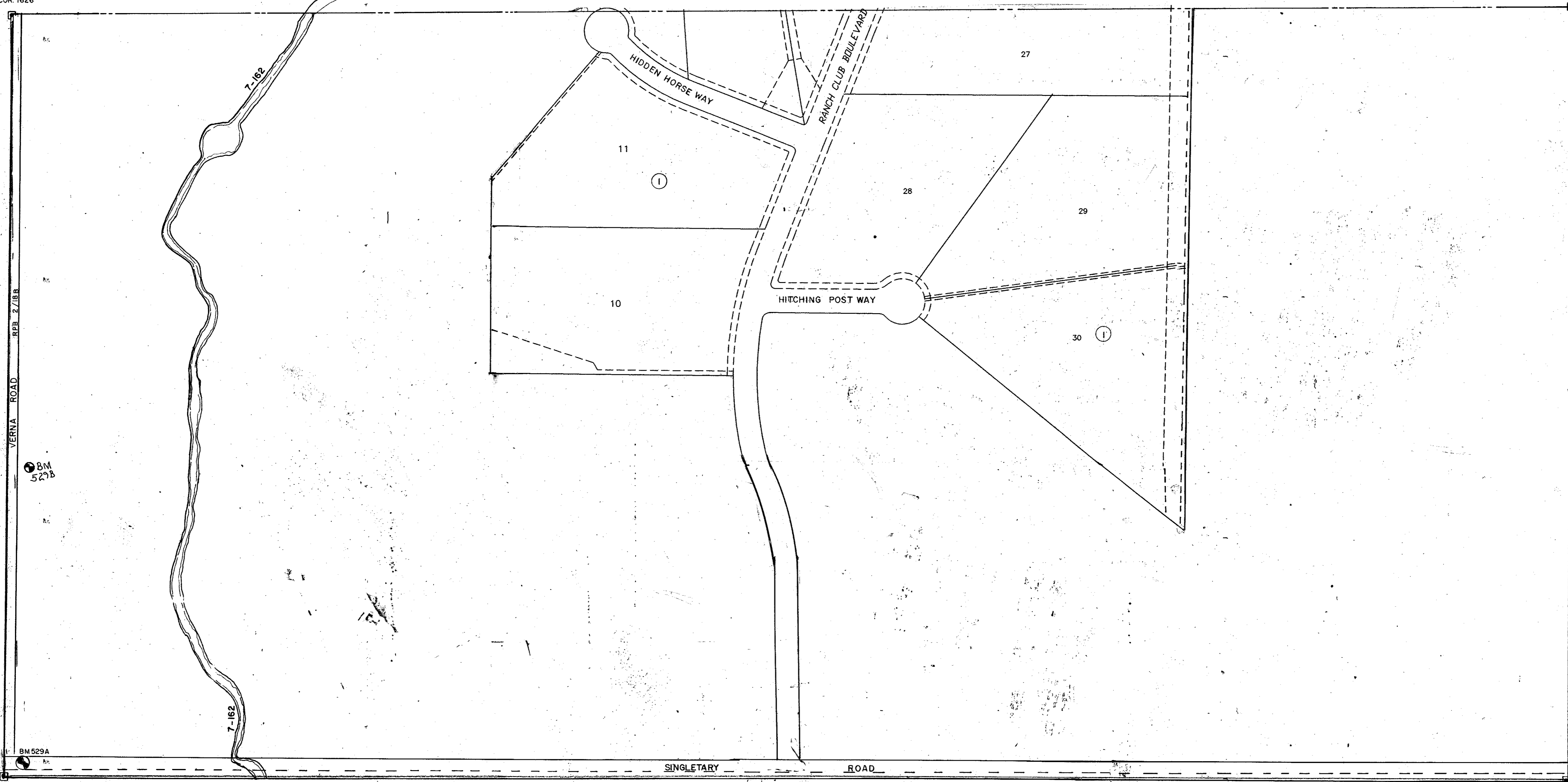


S1/2 12 - 36 - 20 SHT. NO. 528

SEC. COR. 1626

SEC. COR. NO. 1751

N1/2 14 - 36 - 20 SHT. NO. 531



MANATEE COUNTY

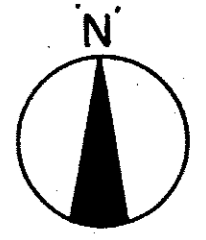
SEC. COR. 1627

SEC. COR. NO. 1753

INDEX

SARASOTA RANCH CLUB PB41/16

S1/2 13 - 36 - 20 SHT NO. 530



- LEGEND.
- PERM. REF MON (for Subs)
 - CONC. MON.
 - IRON PIPE
 - CO. SEC. COR. MON.

ALTERATIONS	
DATE	DESCRIPTION
NOV 1962	SECTION CORNER - DNR'S
OCT. 1962	SARASOTA RANCHES
DEC 1962	ADDED SEC. COR. 1626 TO AN. Corner
JAN 1967	ADDED SINGLE IRON PIPE
JAN 1967	ADDED BENCH MARK
FEB 1967	ADDED CO. SEC. COR. MON.
FEB 1967	REMOVED PROPOSED RC. SUB, SARASOTA RANCHES

SARASOTA COUNTY FLORIDA
 SCALE 1" = 200' OCT. 1963

N 1/2 SECTION 13
 TWP. 36 S. RNG. 20 E

SHT. NO.
 529