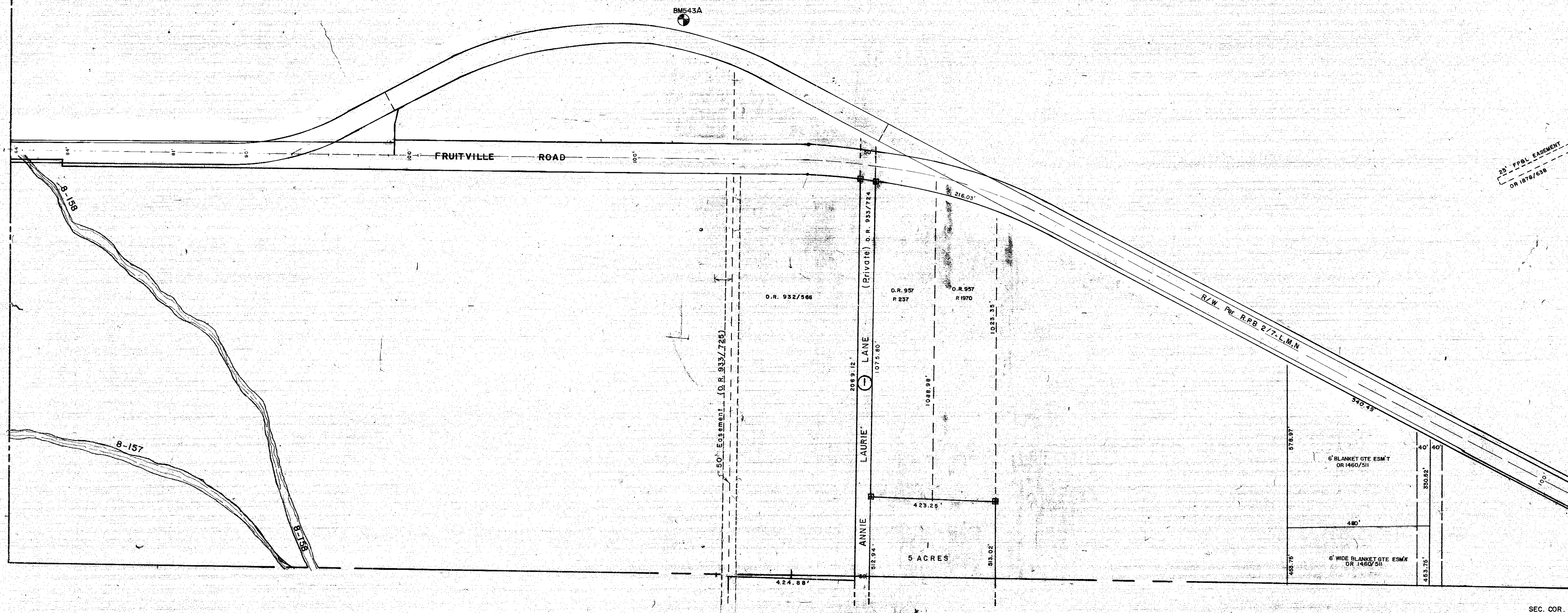


N. 1/2 19-36-20 SHT. NO. 541

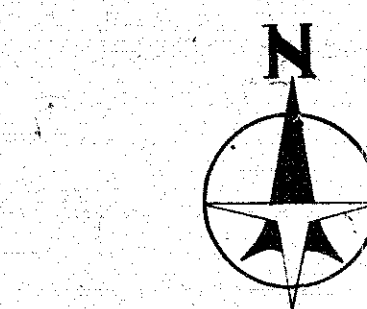
N. 1/2 21-36-20 SHT. NO. 545



SUBDIVISION INDEX

1. Quail Hollow, 23 / 7A

S 1/2 20-36-20 SHT. NO. 544



LEGEND

- Section Corner Monument
- ⊙ Permanent Reference Monument
- Reference Point For Subdivisions
- Drainage
- ① Subdivision Index Number

DATE	REVISION	DESCRIPTION	BY
APR 1993	REVISED FRUITVILLE RD. R/W		305
JUL 1990	CORRECTED FRUITVILLE RD. R/W		
<b>ALTERATIONS</b>			
AUG 1972	REVISION		
FEB 1973			
OCT 1973			
APR 1970	Added Quail Hollow		D.G.M.
JUN 1971	Revised Fruitville Rd. ROW & Added ORB 744/756		L.M.H.
JUL 1975	Easement O.R. 933/722 - Lots 3-5, P. 726 - Lots 1, 2 D.G.N.		
NOV 1968	REMOVED OLD SECTION CORNERS		
NOV 1968	25' FRAL EASEMENT PER OR 1878/619		
MAR 1967	ADDED BM 543		R.J.
SEPT 1967	ADDED CHANNEL NUMBERS		R.J.
NOV 1968	BLANKET 6' WIDE GTE ESMY Per OR 1460/511		SCB

SARASOTA COUNTY FLORIDA  
SCALE: 1" = 200'  
DEC. 1968

N. 1/2 SECTION 20  
TWP. 36S. RNG. 20E.

SHT. NO.  
543