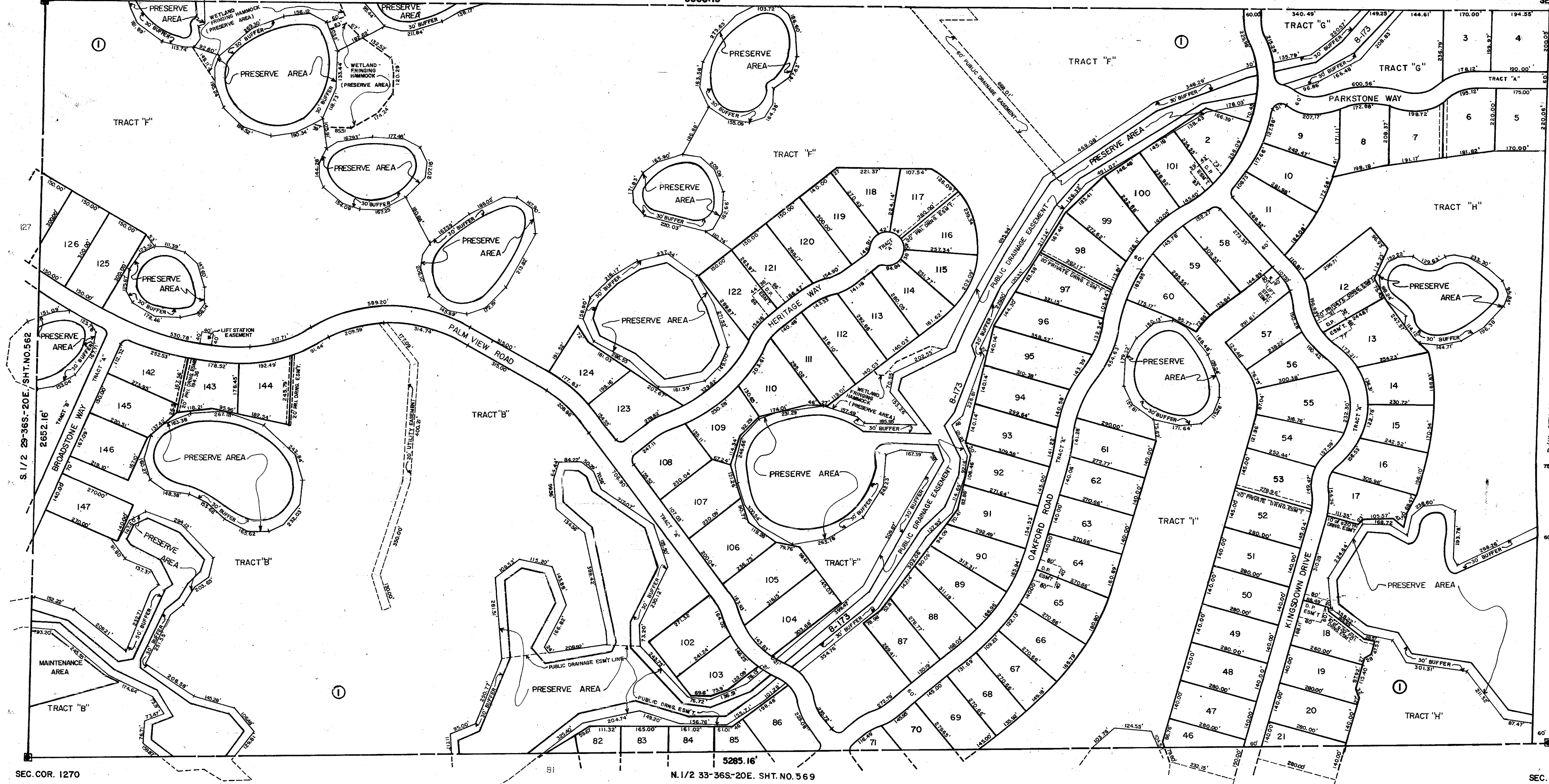


SEC. COR. 1269

N. 1/2 28-36S-20E. SHT. NO. 559
5308.13'

SEC. COR. 1391



SEC. COR. 1270

N. 1/2 33-36S-20E. SHT. NO. 569
5285.16'

SEC. COR. 1392

SUBDIVISION INDEX

OAK FORD GOLF CLUB, P.B. 34 / 31-31Y

LEGEND:

- County Section Corner Monument
- ⊠ County Bench Mark
- Permanent Ref. Mon. for Subs.
- ① Subdivision Index Number

REVISIONS	
DATE	DESCRIPTION
MAY 1992	ADDED R/W
SEPT. 1992	ADDED OAK FORD GOLF CLUB, P.B. 34/31-31Y
DEC. 1988	ADDED CANAL & NUMBERS
DEC. 1988	ADDED O.R. 1848/1368

**SARASOTA COUNTY,
FLORIDA**

Scale: 1" = 200' Date: DEC./1986

Drawn By: C.C.

**S. 1/2 Section 28
Twp. 36 S., Rng. 20E.**

Sheet No.

560