

S 1/2 29-36-20 SHT. NO. 562

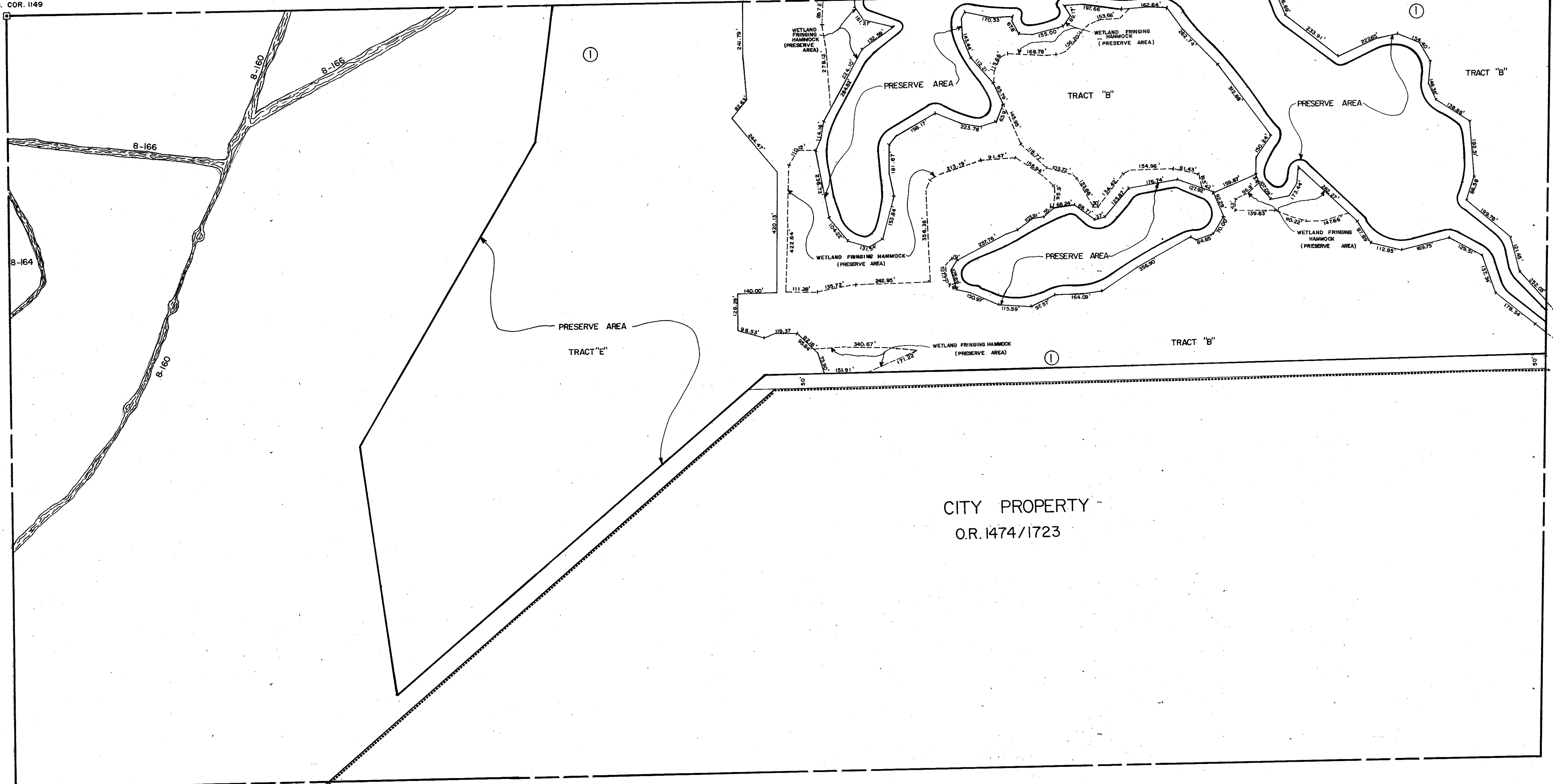
SEC. COR. 1270

SEC. COR. 1149

N 1/2 31-36-20 SHT. NO. 565

N 1/2 33-36-20 SHT. NO. 569

S 1/2 32-36-20 SHT. NO. 568



**SUBDIVISION INDEX**  
 I. OAK FORD GOLF CLUB, P.B. 34/31-31Y

- LEGEND:**
- ☐ County Section Corner Monument
  - ⊠ County Bench Mark
  - Permanent Ref. Mon. for Subs.
  - ① Subdivision Index Number

REVISIONS	
DATE	DESCRIPTION
DEC 1988	ADD CANALS 8-160, 8-164, 8-166
OCT 1990	REVISED OAK FORD CLUB, P.B. 34/31-31Y
MAY 1992	REVISED OAK FORD GOLF CLUB BOUNDARY / CITY PROPERTY

**SARASOTA COUNTY, FLORIDA**

Scale: 1" = 200' Date: 12-28-88  
 Drawn By: SCB

**N 1/2 SECTION 32**  
**Twp. 36 S. Rng. 20 E.**

Sheet No.  
**567**

