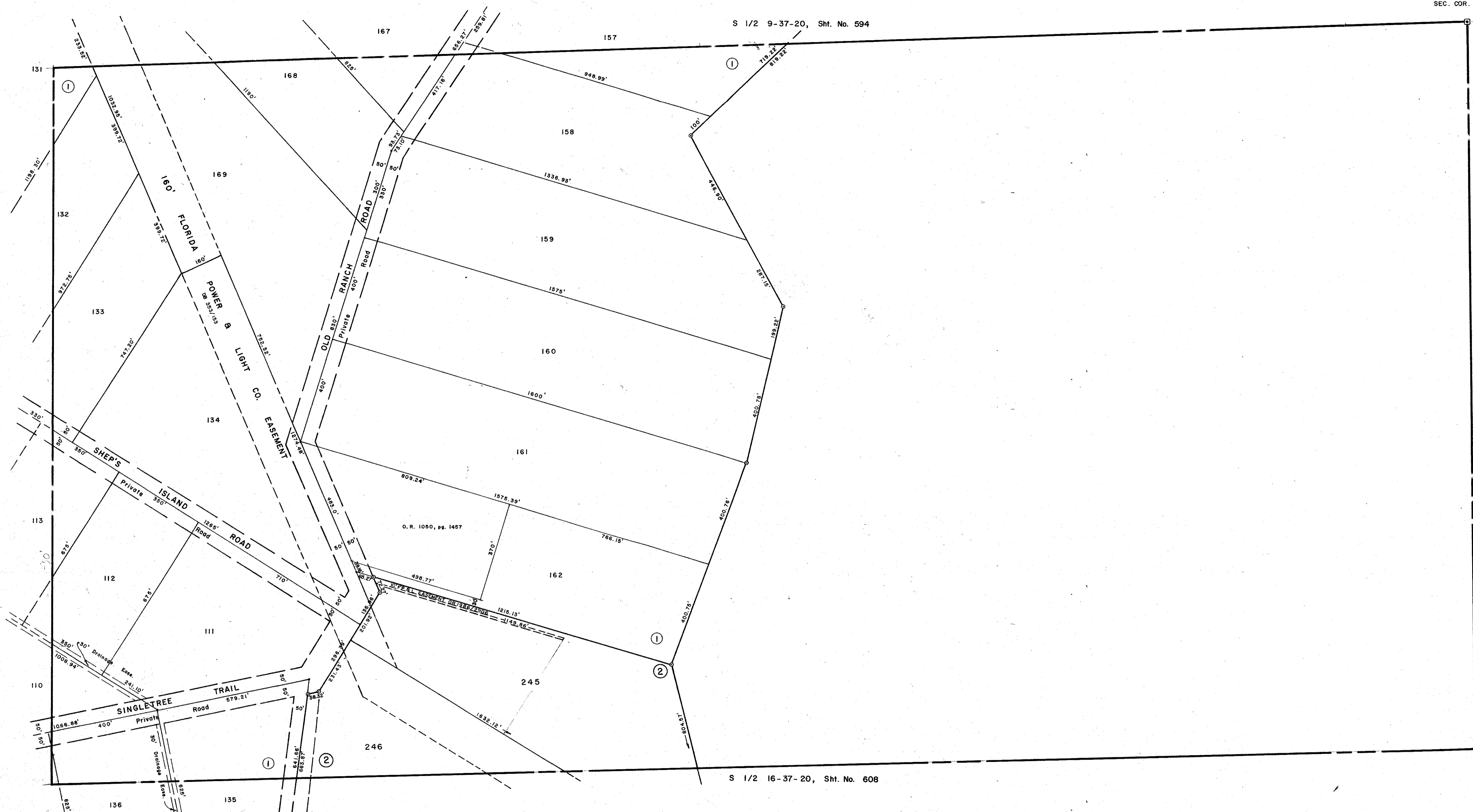


S 1/2 9-37-20, Sht. No. 594

N 1/2 17-37-20, Sht. No. 609

N 1/2 15-37-20, Sht. No. 605

S 1/2 16-37-20, Sht. No. 608



- SUBDIVISION INDEX**
1. Myakka Valley Ranches, Unit No. 3, 22/12, A-D.
 2. Myakka Valley Ranches, Unit No. 5, 24/47, A-B.

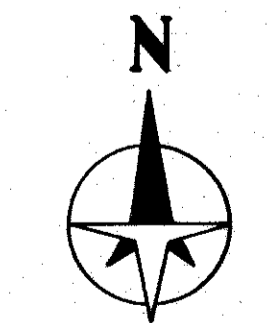
- LEGEND:**
- ☐ County Section Corner Monument
 - ⊕ County Bench Mark
 - Permanent Ref. Mon. for Subs.
 - ① Subdivision Index Number

REVISIONS	
DATE	DESCRIPTION
July 1973	ADDED Myakka Valley Ranches No. 3
Nov. 1974	Splits & Revisions, O.R. 1050, Pg. 1457
Nov. 1976	Revised Section Lines
Feb. 1978	Added Myakka Valley Ranches No. 5
FEB 1988	10' EASEMENT, O.R. 1050/2906
MAR 1989	160' PPL ESM'T, DB 323/154

SARASOTA COUNTY, FLORIDA

Scale: 1" = 200' Date: July, 1973
Drawn By: J.L.D.

**N. 1/2 Section 16
Twp. 37 S. - Rge. 20 E.**



Sheet No.
607