

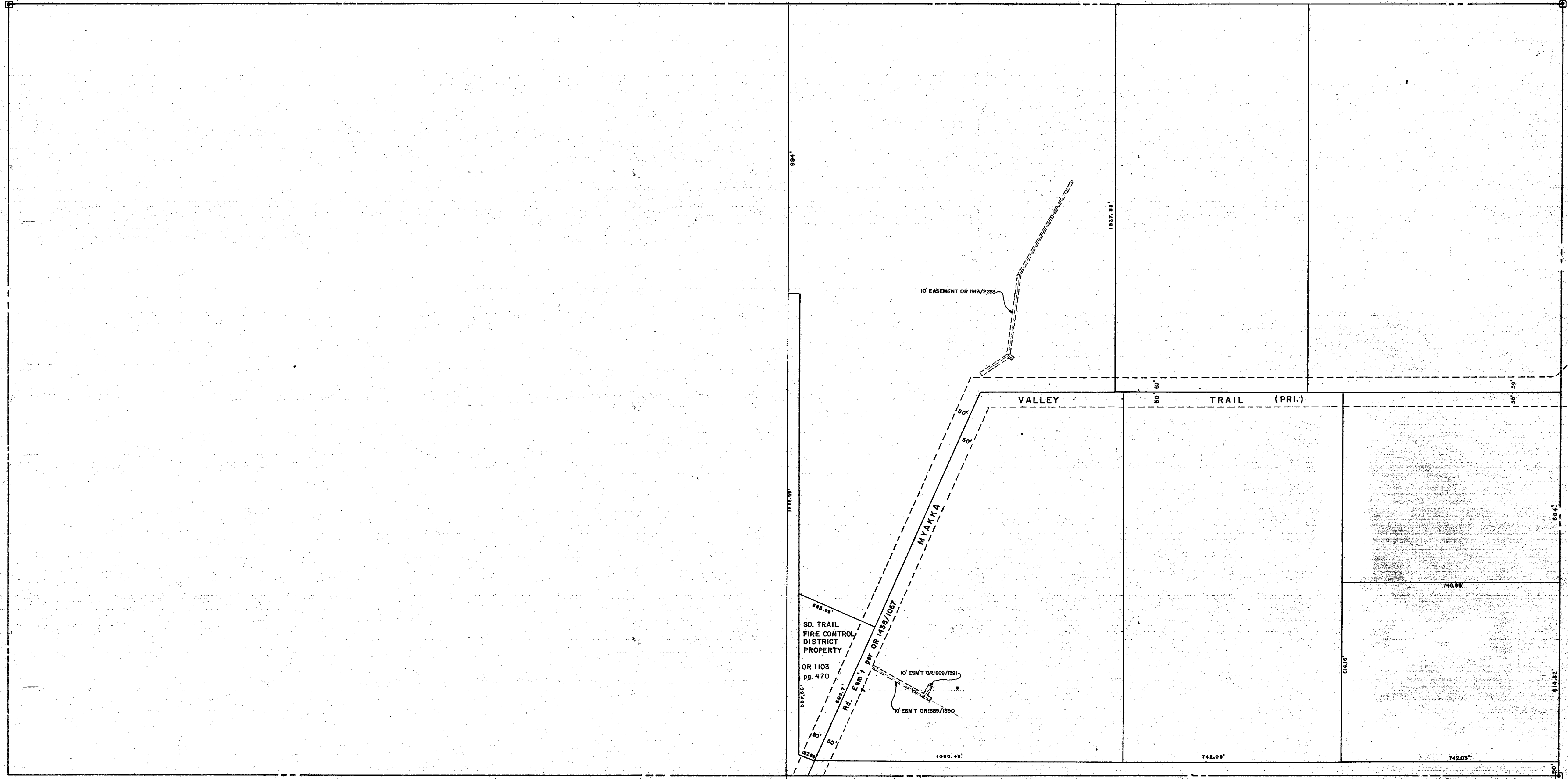
102³
SEC. COR. 1029

SI/2 18 - 37-20 SHT. NO. 612

SEC. COR. 1157

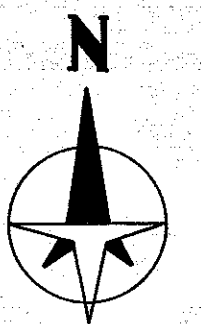
NI/2 24-37-19 SHT. NO. 297

NI/2 20-37-20 SHT. NO. 615



SEC. COR. 1158

SI/2 19 - 37- 20 SHT. NO. 614



LEGEND:

- County Section Corner Monument
- Permanent Reference Monument
- Permanent Ref. Mon. for Subs.
- ① Subdivision Index Number
- ▬ Drainage

ALTERATIONS	
DATE	DESCRIPTION
AUG. 1963	ADDED MYAKKA VALLEY TRAIL (private easement)
FEB. 1973	SPLITS & REVISIONS
MAY 1975	ADDED TRACT "S" J.A.M.
MAY 1977	Revised per Aerial MYAKKA VALLEY TRAIL
AUG. 1981	Added South Trail Fire Control Property
AUG. 1981	REVISION OF MYAKKA VALLEY TRAIL per OR 1428/1067
JUN 1982	SECTION CORNER - DRAWN
JAN 1983	10' ESM' OR 1869/1390
JAN 1983	10' ESM' OR 1869/1390
APR 1987	10' ESM' OR 1912/2285

SARASOTA COUNTY, FLORIDA.
SCALE 1" = 200'
JAN. 1964.

NI/2 SECTION 19
TWP. 37 S. RGE. 20 E.

SHT. NO.
613