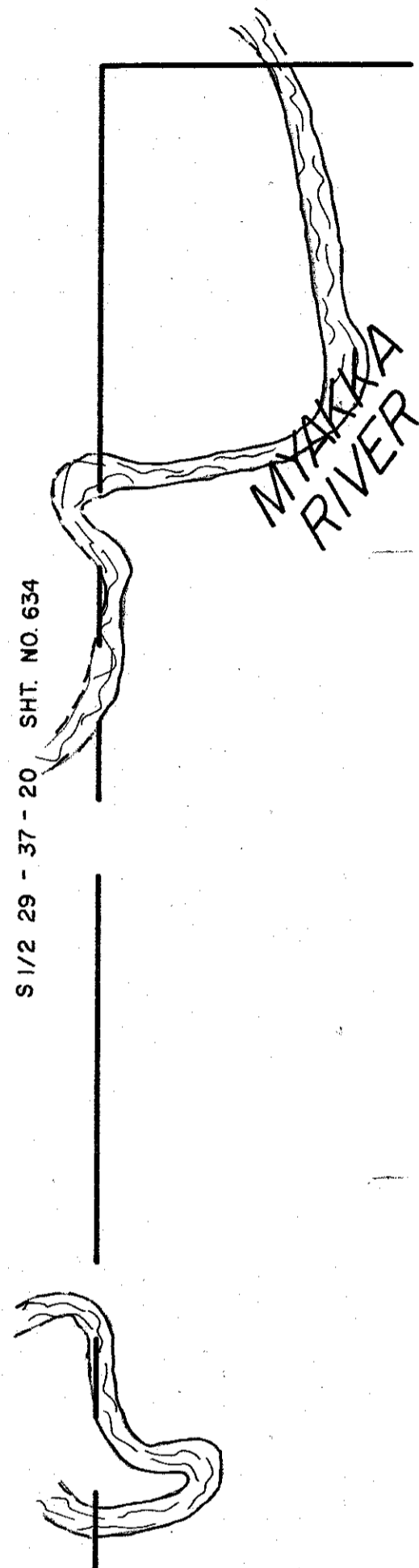
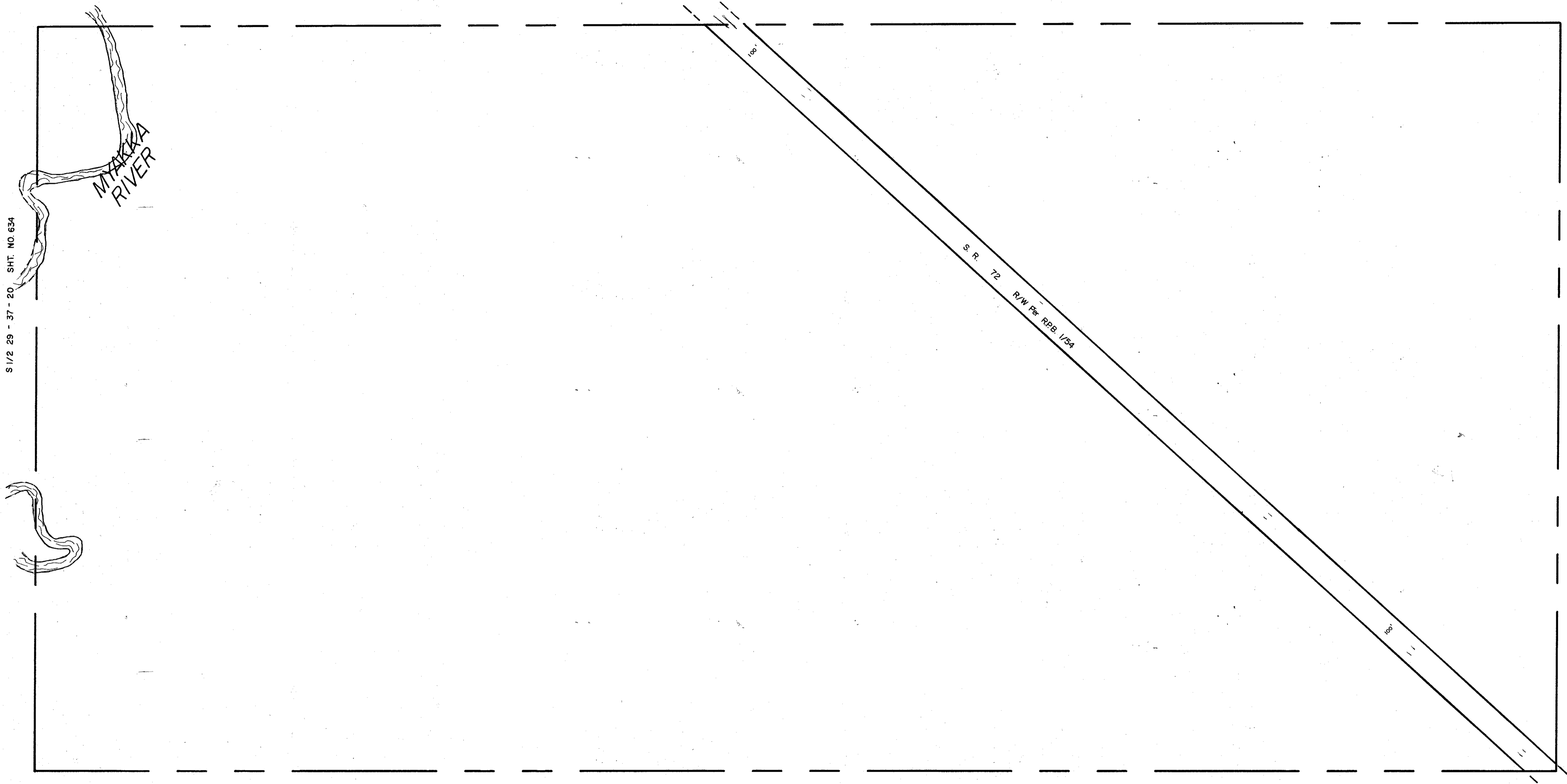


N 1/2 28 - 37 - 20 SHT. NO. 631

S 1/2 29 - 37 - 20 SHT. NO. 634

S 1/2 27 - 37 - 20 SHT. NO. 630

N 1/2 33 - 37 - 20 SHT. NO. 641



LEGEND:

- ▣ COUNTY SECTION CORNER MONUMENT
- ⊕ COUNTY BENCH MARK
- ⊙ PERMANENT REF. MON. FOR SUBS.
- ① SUBDIVISION INDEX NUMBER

REVISIONS	
DATE	DESCRIPTION

**SARASOTA COUNTY, FLORIDA**  
 DATE DRAWN: JUNE, 1991 SCALE: 1" = 200'  
 DRAWN BY:

**S 1/2 SECTION 28**  
**TWP 37 S RGE 20 E**

SHEET NO.  
**632**

