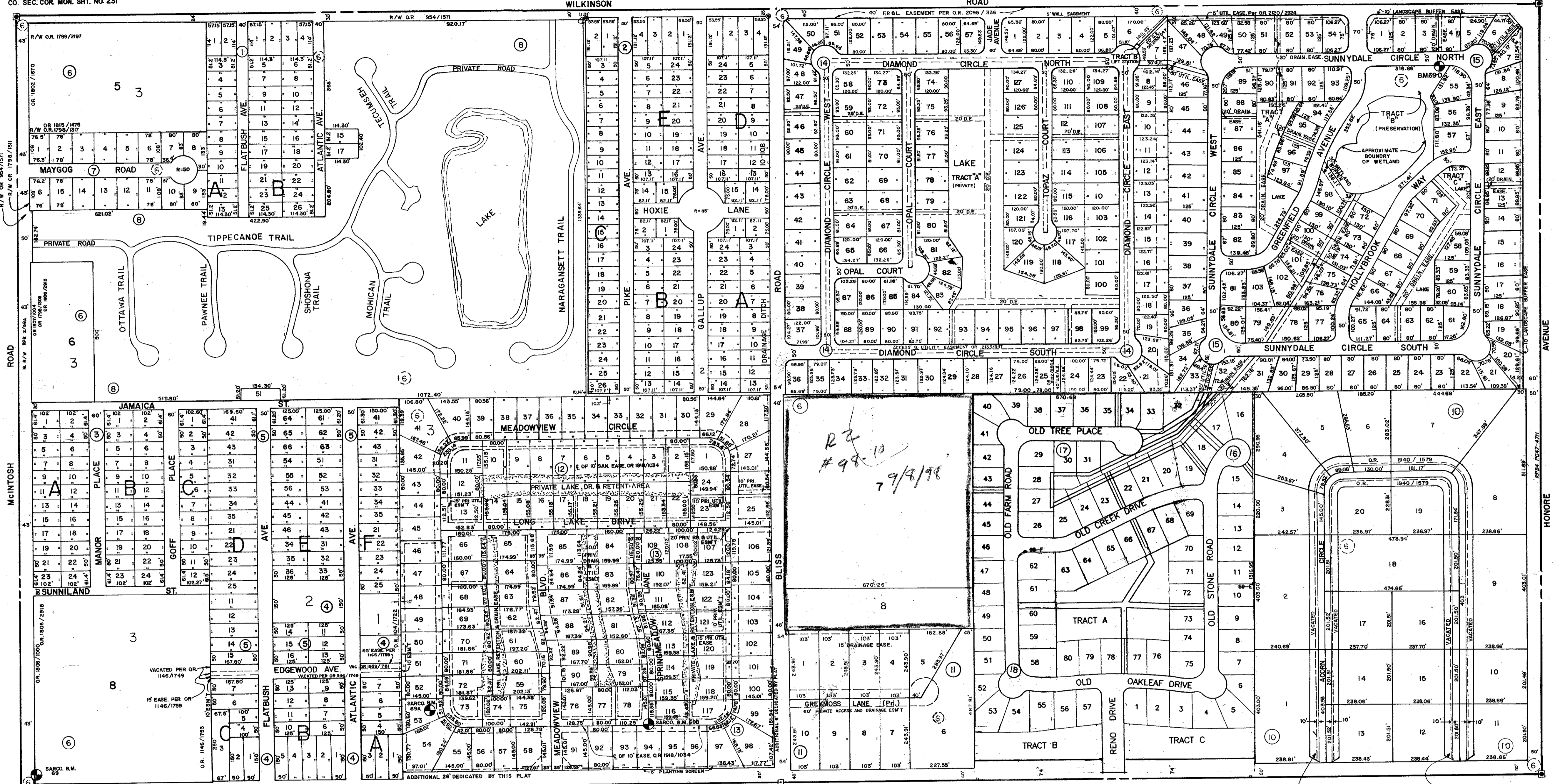


S 1/2 3-37-18 SHT. NO. 71

S 1/2 1-37-18 SHT. NO. 67



SUBDIVISION INDEX

- No. Name
- 1. KEW GARDENS 1/205
- 2. SARASOTA HIGHLANDS 2/79
- 3. HOWARD MANOR 2/167
- 4. ASHWORTH PARK 1/209
- 5. REPLAT OF PART OF ASHWORTH PARK 2/174
- 6. BEE RIDGE FARMS SUB. A/40
- 7. KLEIN TERRACE 10/59
- 8. LAKE TIPPECANOE CONDO. SEC. 1 & 2, C.B. 6, P. 28A-F & C.B. 5/11 & C.B. 9/18
- 9. A REPLAT OF PART OF LAKE TIPPECANOE CONDO. C.B. 9/28
- 10. OAK WOODS SUBDIVISION PB 26/24, A
- 11. GREYMOSS ESTATES PB 28, P. 6, 9, 9A
- 12. SOUTHFIELD SUBDIVISION PB 31, P. 6, 34-34C
- 13. SOUTHFIELD SUB. UNIT II PB 31/37
- 14. EMERALD GARDENS PB 33/23, A
- 15. GREENFIELD PB 35/44-44 A
- 16. OAKLEAF UNIT I PB 36/37
- 17. OAKLEAF UNIT 2 PB 37/35
- 18. OAKLEAF UNIT 3 PB 37/41

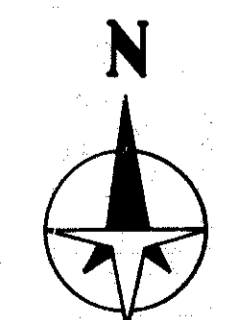
LEGEND:

- ☐ County Section Corner Monument
- ⊙ County Bench Mark
- Permanent Ref. Mon. for Subs.
- ① Subdivision Index Number

REVISIONS	
DATE	DESCRIPTION

SARASOTA COUNTY, FLORIDA

Scale: 1" = 200' Date: Drawn By: B.Y.



Sheet No.

69