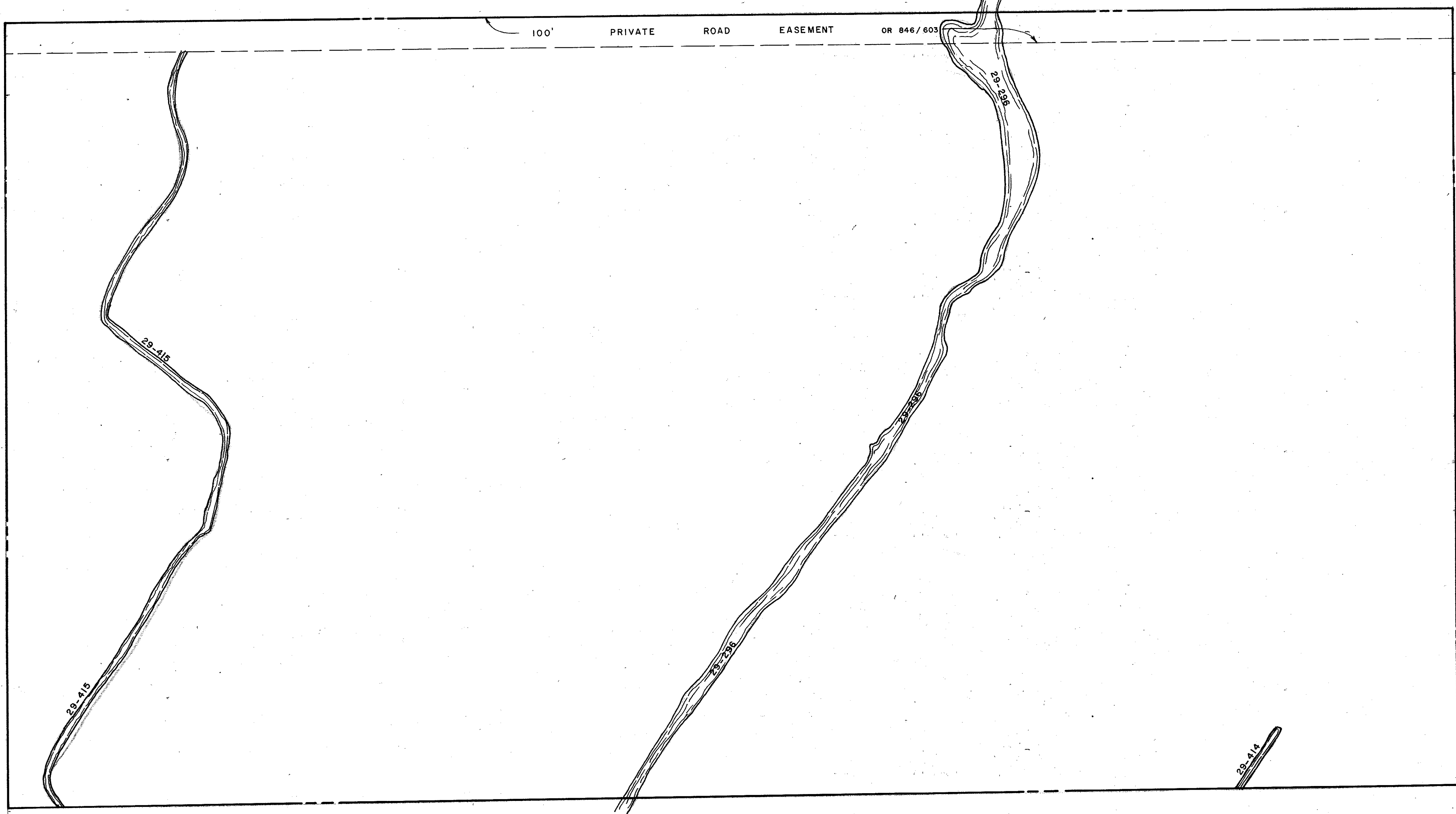


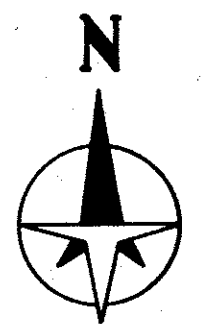
S 1/2 36-38-20 SHT. NO. 720



N 1/2 2-39-20 SHT. NO. 723

N 1/2 6-39-21 SHT. NO. 947

S 1/2 1-39-20 SHT. NO. 722



LEGEND:

- ▣ County Section Corner Monument
- ⊠ County Bench Mark
- Permanent Ref. Mon. for Subs.
- ① Subdivision Index Number

REVISIONS	
DATE	DESCRIPTION
OCT 1985	ADDED P-1, Road Easmt OR 846/603
JAN 1988	ADDED DRAINAGE DITCH & NUMBERS

**SARASOTA COUNTY,
FLORIDA**

Scale: 1" = 200' Date: October 1985

Drawn By: WFW

**N 1/2 SECTION 1
TWP. 39 S., RGE. 20 E.**

Sheet No.
721