

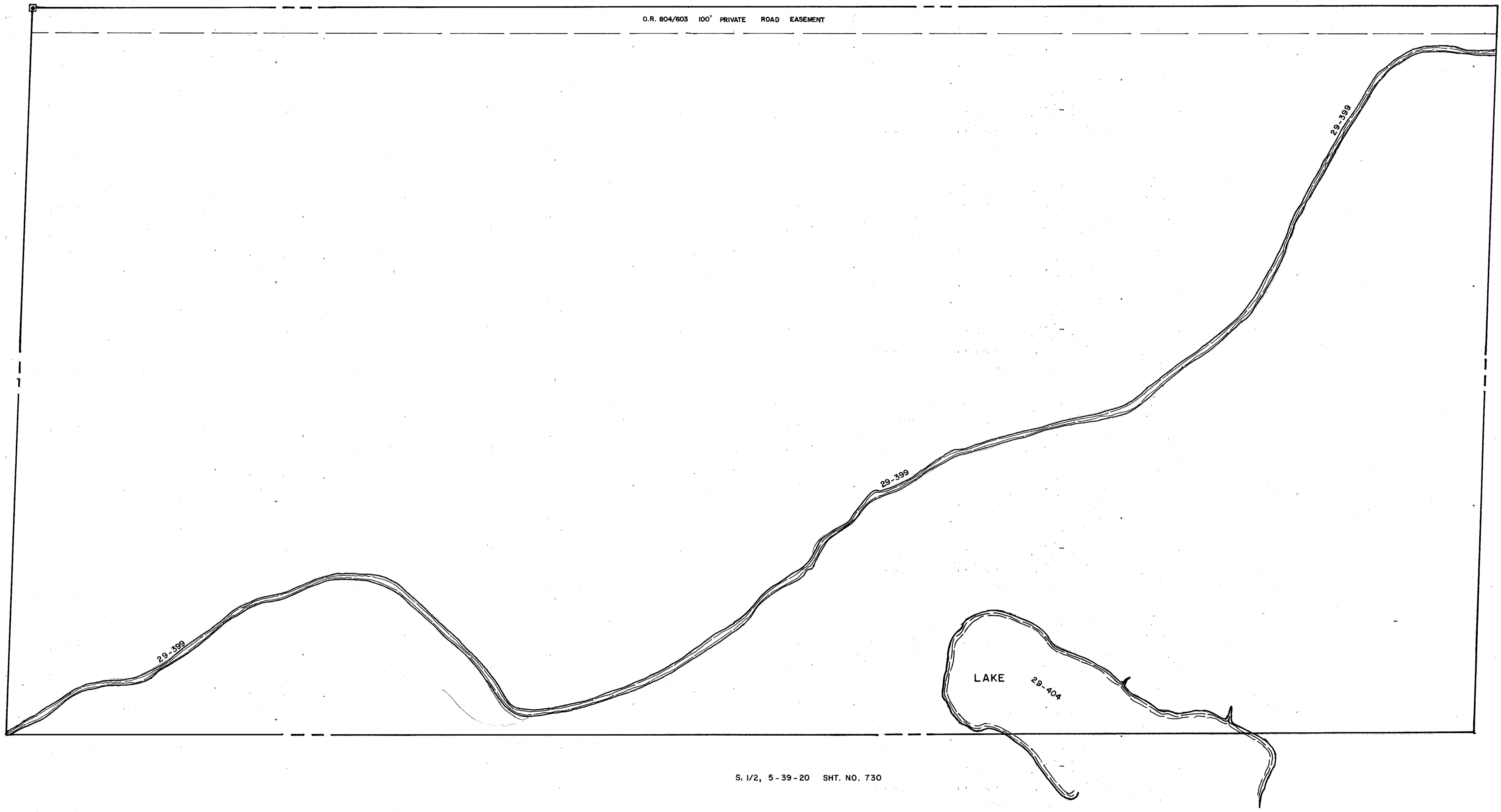
S. 1/2, 32-38-20 SHT. NO. 712

SEC. COR. 1175

O.R. 804/603 100' PRIVATE ROAD EASEMENT

N. 1/2, 6-39-20 SHT. NO. 731

N. 1/2, 4-39-20 SHT. NO. 727



S. 1/2, 5-39-20 SHT. NO. 730



LEGEND:

- ▣ County Section Corner Monument
- ⊠ County Bench Mark
- Permanent Ref. Mon. for Subs.
- ① Subdivision Index Number

REVISIONS	
DATE	DESCRIPTION
NO-20-85 JAN 1985	MAP DRN. ENTERED OR 846/603 ADDED DRAINAGE DITCH# 29-399
	P.E.B. R.J.V.

SARASOTA COUNTY, FLORIDA

Scale: 1" = 200' Date: October 1985

Drawn By: WFW

**N. 1/2 Section 5
Twp. 39 S.-Rge. 20 E.**

Sheet No.
729