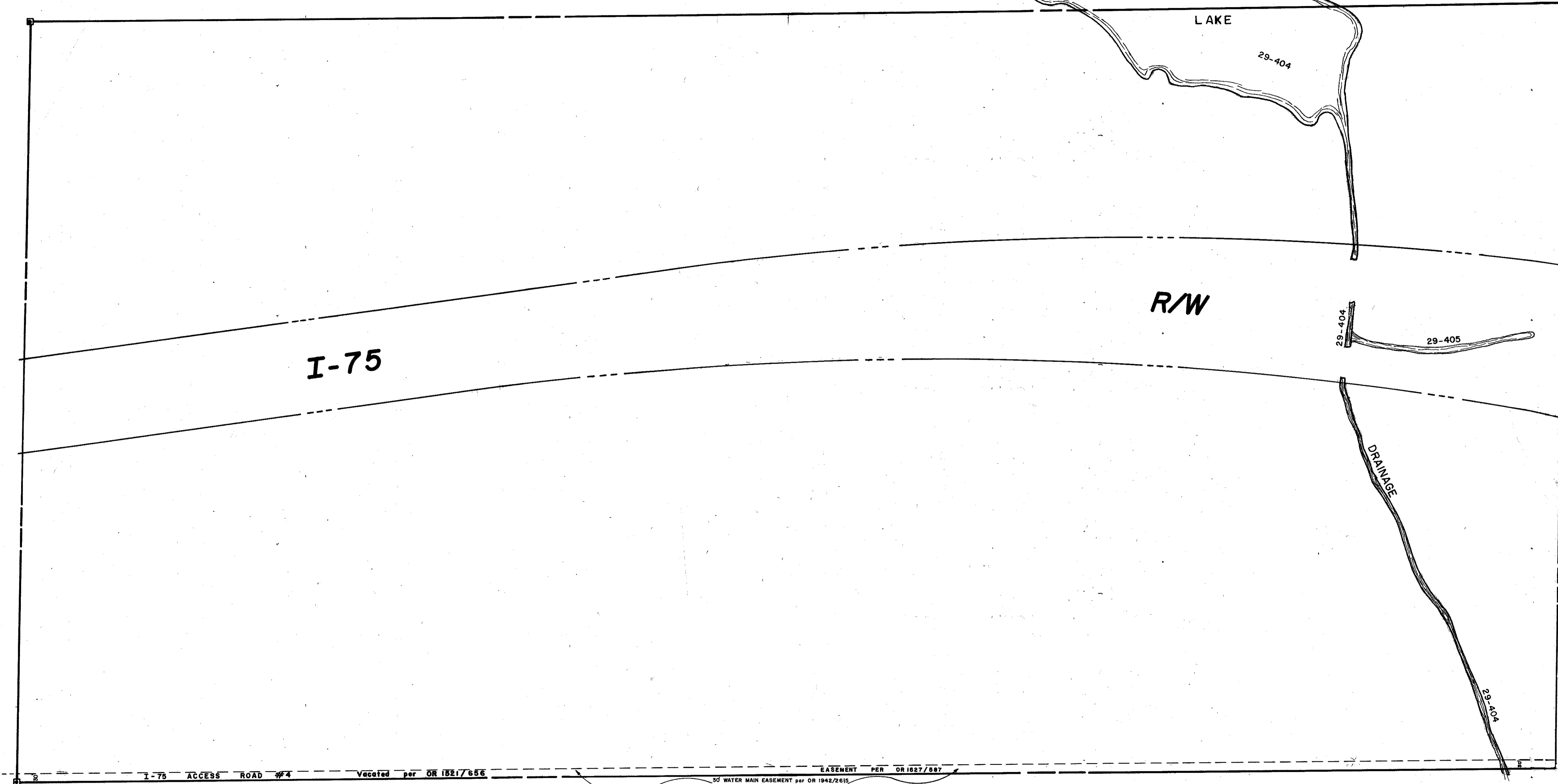


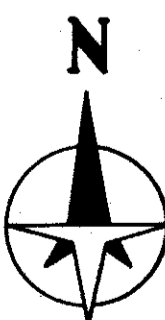
N. 1/2, 5-39-20, SHT. NO. 729

S. 1/2, 6-39-20, SHT. NO. 732

S. 1/2, 4-39-20, SHT. NO. 728



N. 1/2, 8-39-20, SHT. NO. 735



LEGEND:

- ☐ County Section Corner Monument
- ⊕ County Bench Mark
- Permanent Ref. Mon. for Subs.
- ① Subdivision Index Number

REVISIONS		
DATE	DESCRIPTION	
February, 1981	Drawn and added I-75 R/W per S.R.D. R/W Maps	SEB
July 1982	Vacated ACCESS ROAD No. 4 per OR 1521/656	JMY
Aug. 1982	Access Easement per OR 1527/587	JMY
Oct. 1985	Added lake and drainage per direct photo	PEB
JUNE 1987	30" WATER MAIN EASEMENT	RBB
JAN. 1989	ADDED DRAINAGE NUMBERS	RBB

SARASOTA COUNTY, FLORIDA

Scale: 1" = 200' Date: February, 1981

Drawn By: Steve Burkholder

S 1/2 SECTION 5 TWP. 39 S., RGE. 20 E.

Sheet No.

730